

HI-VOR or TACAN RWY 28R

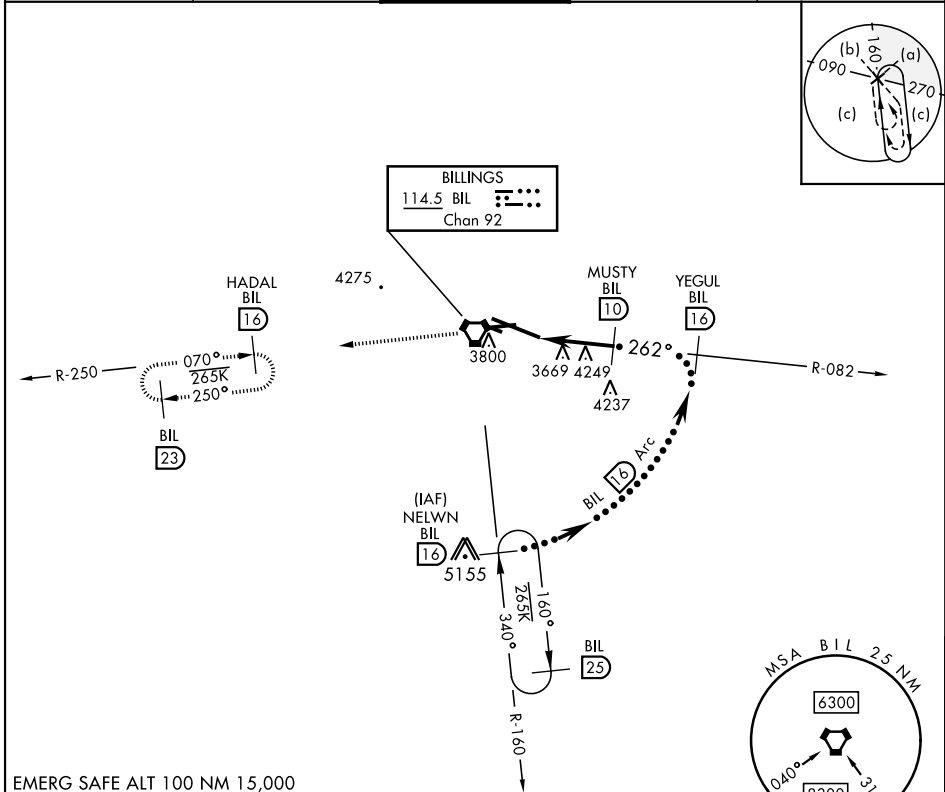
VORTAC BIL 114.5 Chan 92	APCH CRS 262°	Rwy Idg 10,518 TDZE 3517 Arprt Elev 3662	AL-48 [USAF]	BILLINGS LOGAN INTL (KBIL)
--------------------------------	------------------	--	--------------	----------------------------

DME required.

▼

MISSED APPROACH: Climb to 9000 on BIL VORTAC R-082 to BIL VORTAC, and on BIL VORTAC R-250 to HADAL/16 DME and hold, continue Climb-in-Hold to 9000.

ATIS 126.3	BILLINGS APP CON 120.5 284.6	BILLINGS TOWER 127.2 257.8	GND CON 121.9	CLNC DEL 121.9
---------------	---------------------------------	-------------------------------	------------------	-------------------

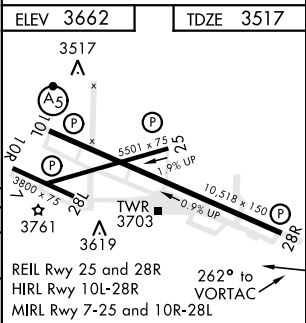


EMERG SAFE ALT 100 NM 15,000

9000	BIL	HADAL BIL	NELWN R-160
↑	⬠	⬠	⬠
	BIL R-250		
	⬠		

The profile view shows the vertical profile of the approach. It starts at 4260 feet at the VORTAC BIL station. The path then rises to 5200 feet at the MUSTY BIL station and 6400 feet at the YEGUL BIL station. The final approach is on R-160, with a 2.88-degree climb angle and a 56-foot touchdown height. The distance from the VORTAC BIL station to the MUSTY BIL station is 2.3 NM, and from the MUSTY BIL station to the YEGUL BIL station is 3.1 NM. The final approach is on R-160, with a 160-degree turn and a 340-degree turn. A 265K arc is also shown.

CATEGORY	C	D	E
S-28R	3940-1½	423 (300-1½)	
CIRCLING	4180-1½ 518 (600-1½)	4580-3	918 (1000-3)



HI-VOR or TACAN RWY 28R

NW-1, 26 DEC 2024 to 23 JAN 2025

NW-1, 26 DEC 2024 to 23 JAN 2025