

WAAS CH <b>56222</b> W28A	APP CRS <b>282°</b>	Rwy Idg <b>10518</b> TDZE <b>3517</b> Apt Elev <b>3662</b>
---------------------------------	------------------------	--

# RNAV (GPS) Y RWY 28R

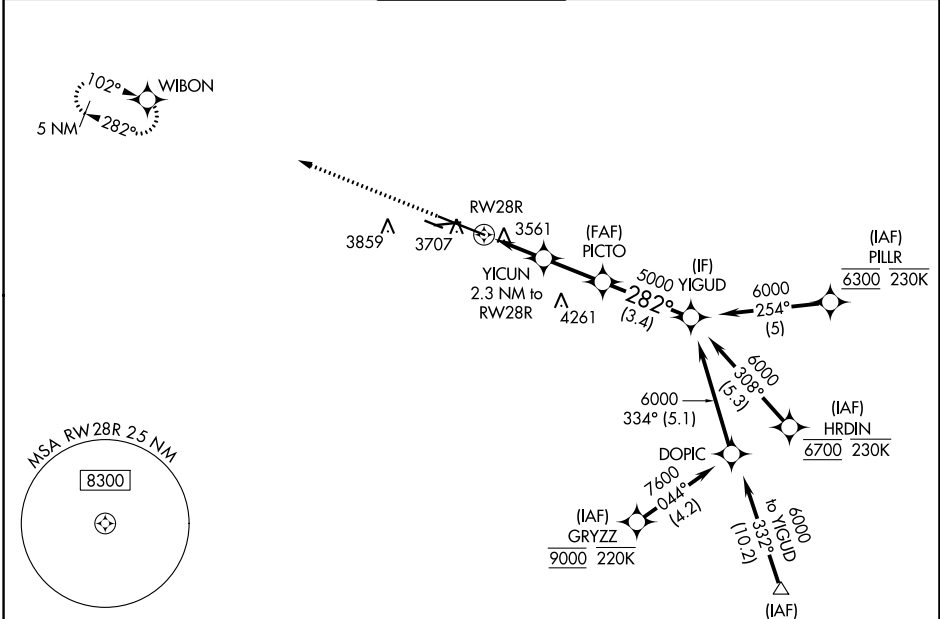
BILLINGS LOGAN INTL (BIL)

RNP APCH - GPS.

**⚠** For uncompensated Baro-VNAV systems, LNAV/VNAV NA below -24°C or above 50°C.

MISSED APPROACH: Climb to 5900 direct WIBON and hold.

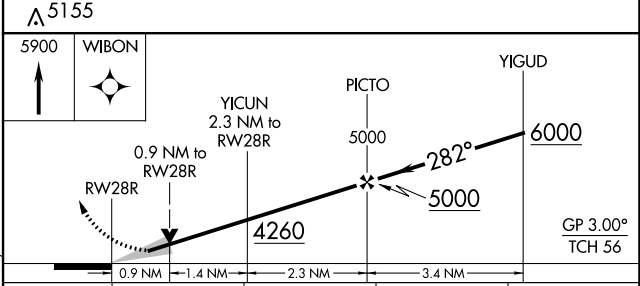
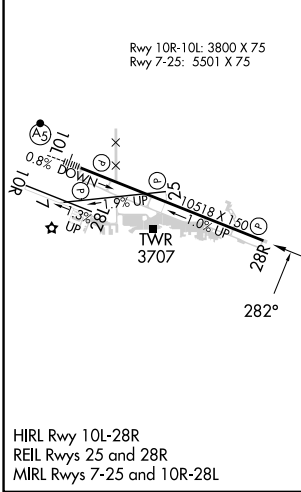
ATIS <b>126.3</b>	BILLINGS APP CON <b>120.5 284.6</b>	BILLINGS TOWER <b>127.2 257.8</b>	GND CON <b>121.9</b>	CLNC DEL <b>121.9</b>
----------------------	--	--------------------------------------	-------------------------	--------------------------



NW-1, 26 DEC 2024 to 23 JAN 2025

NW-1, 26 DEC 2024 to 23 JAN 2025

ELEV 3662	<b>D</b>	TDZE 3517
-----------	----------	-----------



CATEGORY	A	B	C	D
LPV DA		3767- <sup>3</sup> / <sub>4</sub>	250 (200- <sup>3</sup> / <sub>4</sub> )	
LNAV/VNAV DA		3786- <sup>7</sup> / <sub>8</sub>	269 (200- <sup>7</sup> / <sub>8</sub> )	
LNAV MDA		3820-1	303 (200-1)	
<b>C</b> CIRCLING	4160-1	498 (500-1)	4180-1 <sup>1</sup> / <sub>2</sub> 518 (600-1 <sup>1</sup> / <sub>2</sub> )	4580-3 918 (1000-3)