

VORTAC BIL 114.5 Chan 92	APP CRS 262°	Rwy Idg 10518 TDZE 3517 Apt Elev 3662
--	------------------------	--

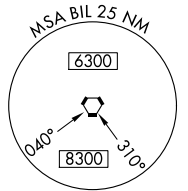
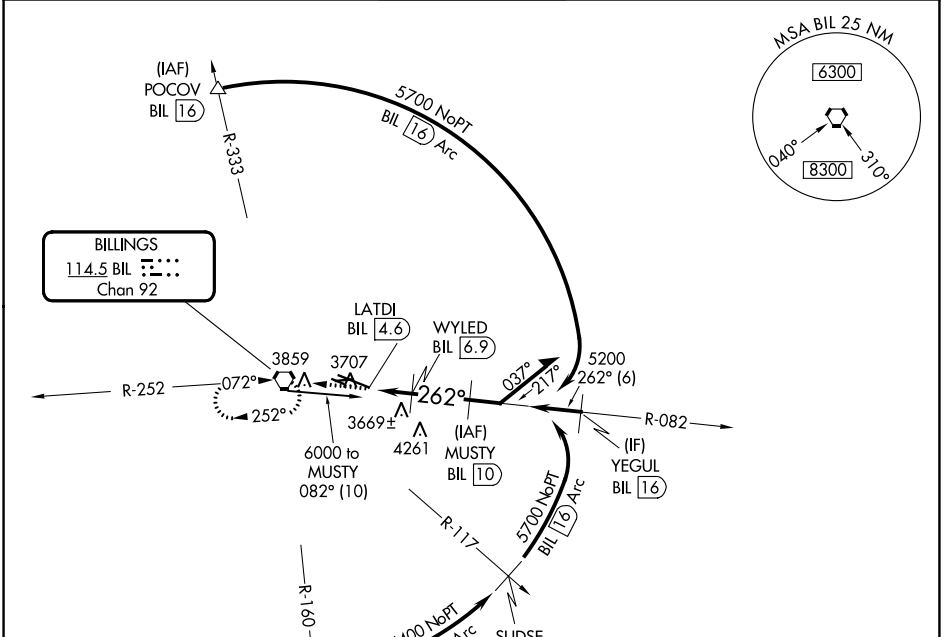
VOR/DME RWY 28R

BILLINGS LOGAN INTL (BIL)

Helicopter visibility reduction below 3/4 SM NA.

MISSED APPROACH: Climb to 6000 direct BIL VORTAC and hold, continue climb-in-hold to 6000.

ATIS 126.3	BILLINGS APP CON 120.5 284.6	BILLINGS TOWER 127.2 257.8	GND CON 121.9	CLNC DEL 121.9
----------------------	--	--------------------------------------	-------------------------	--------------------------



NW-1, 26 DEC 2024 to 23 JAN 2025

NW-1, 26 DEC 2024 to 23 JAN 2025

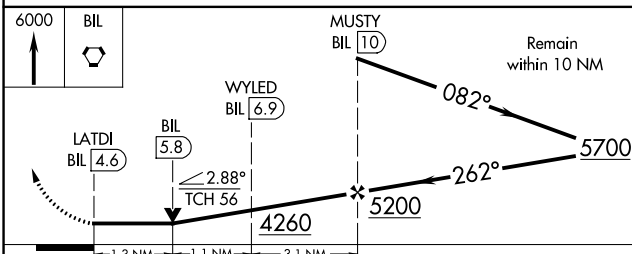
ELEV 3662 TDZE 3517

Rwy 10R-10L: 3800 X 75
Rwy 7-25: 5501 X 75

Profile view details: Altitudes 6000, 5700, 5200, 4260. Glide slopes: 0.8% DOWN, 1.3% UP, 1.9% UP, 1.0% UP. TWR 3707.

CATEGORY	A	B	C	D
S-28R	3940-1	423 (300-1)	3940-1 ³ / ₈	423 (300-1 ³ / ₈)
CIRCLING	4160-1 498 (500-1)	4180-1 518 (600-1)	4180-1 ¹ / ₂ 518 (600-1 ¹ / ₂)	4580-3 918 (1000-3)

REIL Rwy 25 and 28R
HIRL Rwy 10L-28R
MIRL Rwy 7-25 and 10R-28L



CATEGORY	A	B	C	D
S-28R	3940-1	423 (300-1)	3940-1 ³ / ₈	423 (300-1 ³ / ₈)
CIRCLING	4160-1 498 (500-1)	4180-1 518 (600-1)	4180-1 ¹ / ₂ 518 (600-1 ¹ / ₂)	4580-3 918 (1000-3)