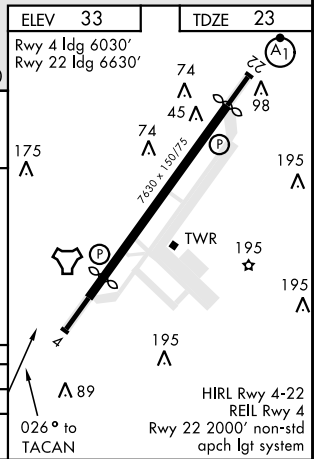
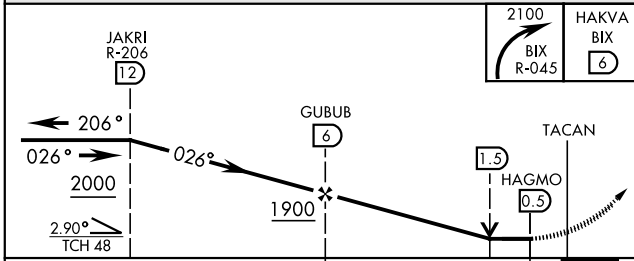
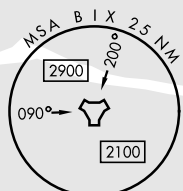
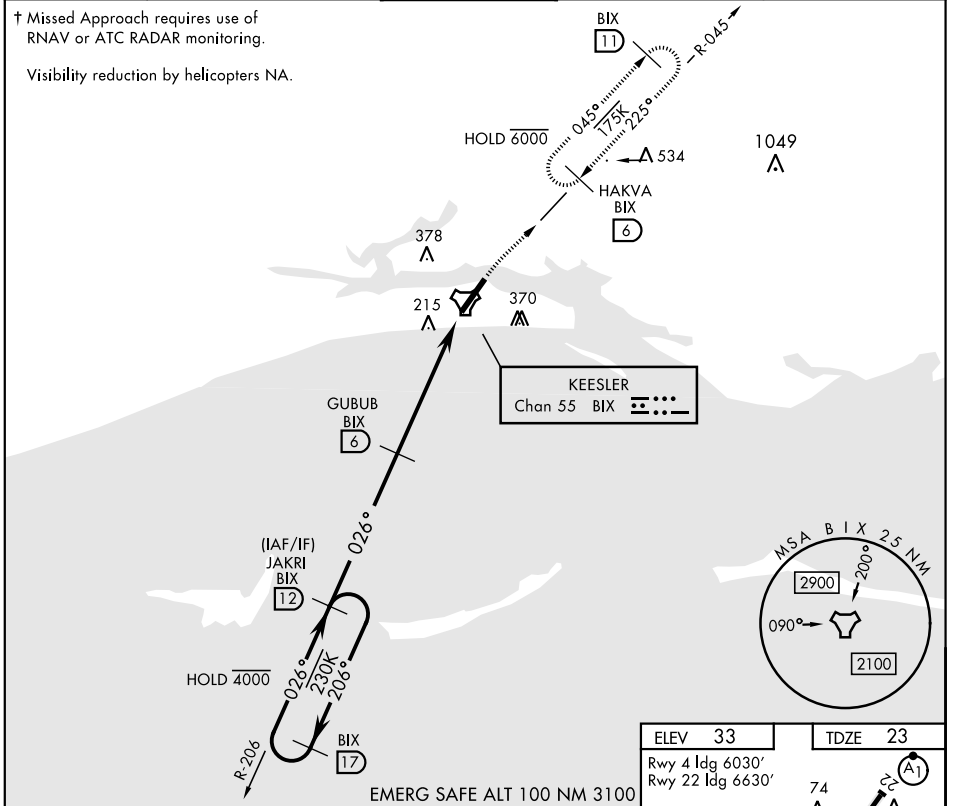


# TACAN RWY 4

TACAN BIX Chan <b>55</b>	APCH CRS <b>026°</b>	Rwy ldg TDZE <b>23</b> Arprt Elev <b>33</b>	AL-49 [USAF]	KEESLER AFB (KBIX)
-----------------------------	-------------------------	---	--------------	--------------------

† MISSED APPROACH: Turn right climbing to 2100 to intercept BIX TACAN R-045 to 6 DME (HAKVA) and hold.

ATIS <b>281.55</b>	GULFPORT APP CON <b>124.6 354.1</b> (130°-309°) <b>127.5 254.25</b> (310°-129°)	KEESLER TOWER ★ <b>120.75 269.075</b>	GND CON <b>121.8 275.8</b>	CLNC DEL <b>121.8 275.8</b>
-----------------------	---	--	-------------------------------	--------------------------------



CATEGORY	A	B	C	D
S-4	520/55 497 (500-1)	520-1 3/8 497 (500-1 3/8)	680-1 3/8	680-2
CIRCLING	580-1 547 (600-1)	660-1 627 (700-1)	680-1 3/8 647 (700-1 3/8)	680-2 647 (700-2)

# TACAN RWY 4

SC-4, 26 DEC 2024 to 23 JAN 2025

SC-4, 26 DEC 2024 to 23 JAN 2025