

LOC I-BHM 110.3	APP CRS 058°	Rwy ldg 12007
		TDZE 606
		Apt Elev 650

ILS RWY 6 (CAT II)

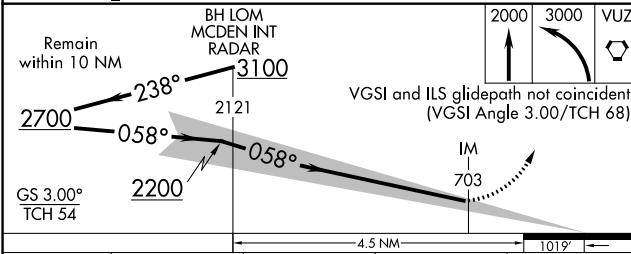
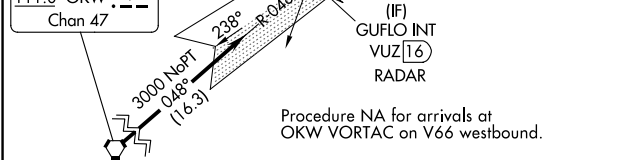
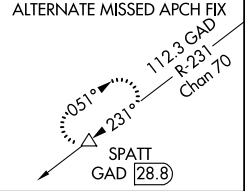
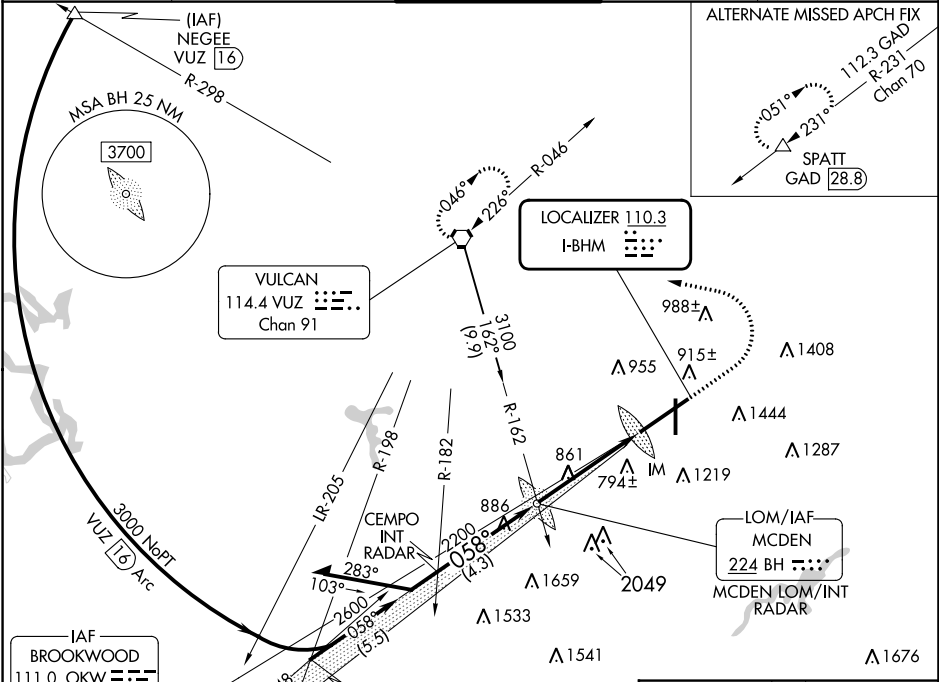
BIRMINGHAM-SHUTTLESWORTH INTL (BHM)

RNP APCH-GPS. From OKW VORTAC.

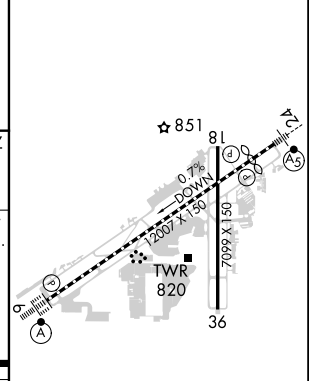


MISSED APPROACH: Climb to 2000 then climbing left turn to 3000 direct VUZ VORTAC and hold.

ATIS 119.4 270.1	BIRMINGHAM APP CON 123.8 256.8	BIRMINGHAM TOWER 119.9 317.725	GND CON 121.7 348.6	CLNC DEL 125.675 305.2
----------------------------	--	--	-------------------------------	----------------------------------



ELEV 650	TDZE 606
----------	----------



CATEGORY	A	B	C	D
S-ILS 6	RA 118/12 100		DA 706	

CATEGORY II ILS - SPECIAL AIRCREW & AIRCRAFT CERTIFICATION REQUIRED

REIL Rwy 18 and 36
 TDZ/CL Rwy 6
 HIRL Rwy 6-24
 MIRL Rwy 18-36

SE-4, 26 DEC 2024 to 23 JAN 2025

SE-4, 26 DEC 2024 to 23 JAN 2025