

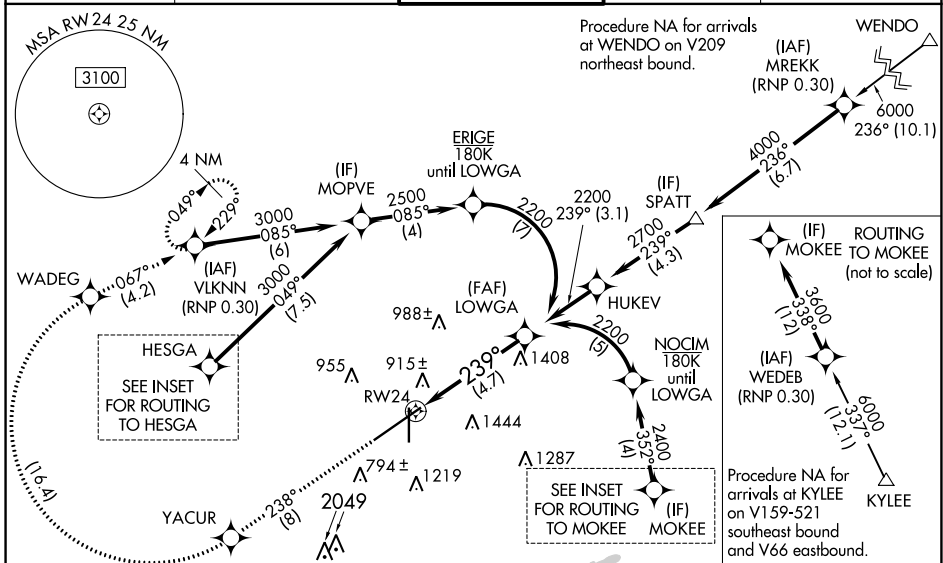
APP CRS  
**239°**

Rwy Idg **10801**  
TDZE **641**  
Apt Elev **650**

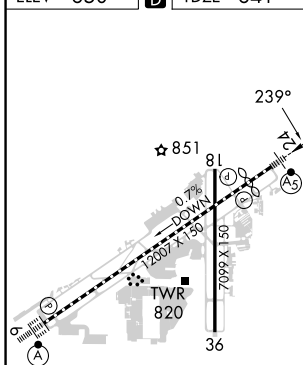
# RNAV (RNP) Z RWY 24

BIRMINGHAM-SHUTTLESWORTH INTL (BHM)

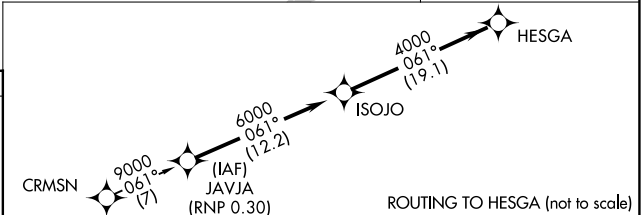
|  |  |  |  |                                  |
|--|--|--|--|----------------------------------|
| RNP AR APCH. RF required.  |  | MALSR                                    | MISSED APPROACH: Climb to 3000 on track 238° to YACUR then, right turn to WADEG, then on track 067° to VLKNN and hold. |                                  |
| <p>▼ For uncompensated Baro-VNAV systems, procedure NA below -8°C or above 54°C. For inop ALS, increase RNP 0.15 all Cats visibility to 1 3/8 and increase RNP 0.30 all Cats visibility to 1 3/4 SM.</p> |  |  |  |                                  |
| ATIS<br><b>119.4 270.1</b>   | BIRMINGHAM APP CON<br><b>123.8 256.8</b> | BIRMINGHAM TOWER<br><b>119.9 317.725</b> | GND CON<br><b>121.7 348.6</b>  | CLNC DEL<br><b>125.675 305.2</b> |



|          |          |          |
|----------|----------|----------|
| ELEV 650 | <b>D</b> | TDZE 641 |
|----------|----------|----------|



REIL Rws 18 and 36  
TDZ/CL Rwy 6  
HIRL Rwy 6-24  
MIRL Rwy 18-36



|  |           |       |   |                 |           |       |       |
|--|-----------|-------|---|-----------------|-----------|-------|-------|
| 3000   | ↑ tr 238° | YACUR | ↘ | WADEG           | ↘ tr 067° | VLKNN | LOWGA |
| VGS1 and RNAV glidepath not coincident (VGS1 Angle 3.00/TCH 69). |           |       |   |                 |           |       |       |
| RW24   |           |       |   | 239°            |           |       |       |
|  |           |       |   | 2200            |           |       |       |
|  |           |       |   | GP 3.00° TCH 52 |           |       |       |
| 4.7 NM   |           |       |   |                 |           |       |       |
| See planview for multiple IF locations.                          |           |       |   |                 |           |       |       |

|             |   |            |                 |   |
|-------------|---|------------|-----------------|---|
| CATEGORY    | A | B          | C               | D |
| RNP 0.15 DA |   | 1149-1     | 508 (500-1)     |   |
| RNP 0.30 DA |   | 1243-1 3/8 | 602 (600-1 3/8) |   |

**AUTHORIZATION REQUIRED**

SE-4, 26 DEC 2024 to 23 JAN 2025

SE-4, 26 DEC 2024 to 23 JAN 2025