

APP CRS **058°**  
 Rwy ldg **12007**  
 TDZE **606**  
 Apt Elev **650**

# RNAV (RNP) Z RWY 6

BIRMINGHAM-SHUTTLESWORTH INTL (BHM)

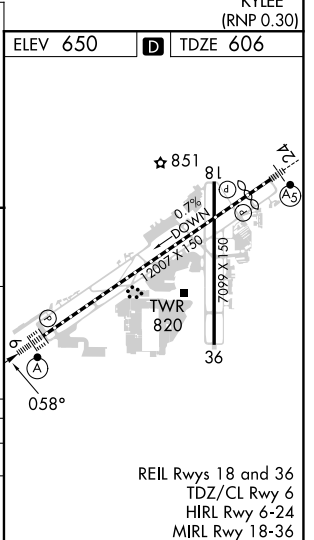
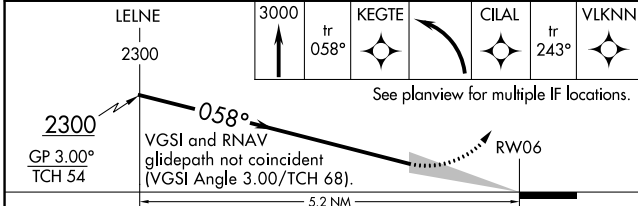
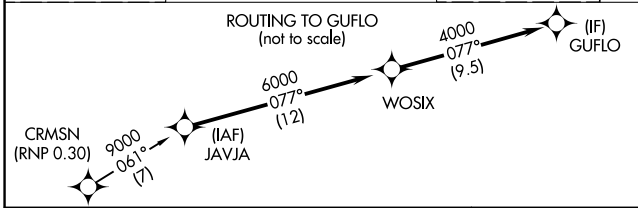
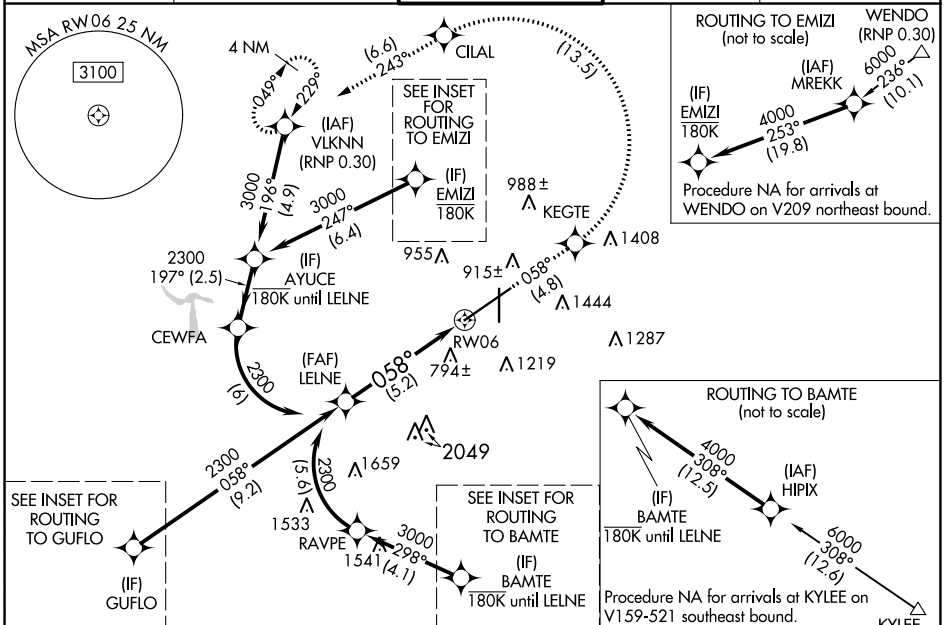
RNP AR APCH. RF required.

ALSF-2

▼ For uncompensated Baro-VNAV systems, procedure NA below -8°C or above 54°C.

MISSED APPROACH: Climb to 3000 on track 058° to KEGTE left turn to CILAL and track 243° to VLKNN and hold.

ATIS <b>119.4 270.1</b>	BIRMINGHAM APP CON <b>123.8 256.8</b>	BIRMINGHAM TOWER <b>119.9 317.725</b>	GND CON <b>121.7 348.6</b>	CLNC DEL <b>125.675 305.2</b>
----------------------------	--	--	-------------------------------	----------------------------------



CATEGORY	A	B	C	D
RNP 0.30 DA		1138/55	532 (500-1)	

**AUTHORIZATION REQUIRED**

SE-4, 26 DEC 2024 to 23 JAN 2025

SE-4, 26 DEC 2024 to 23 JAN 2025