

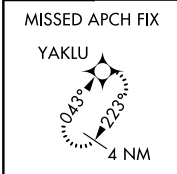
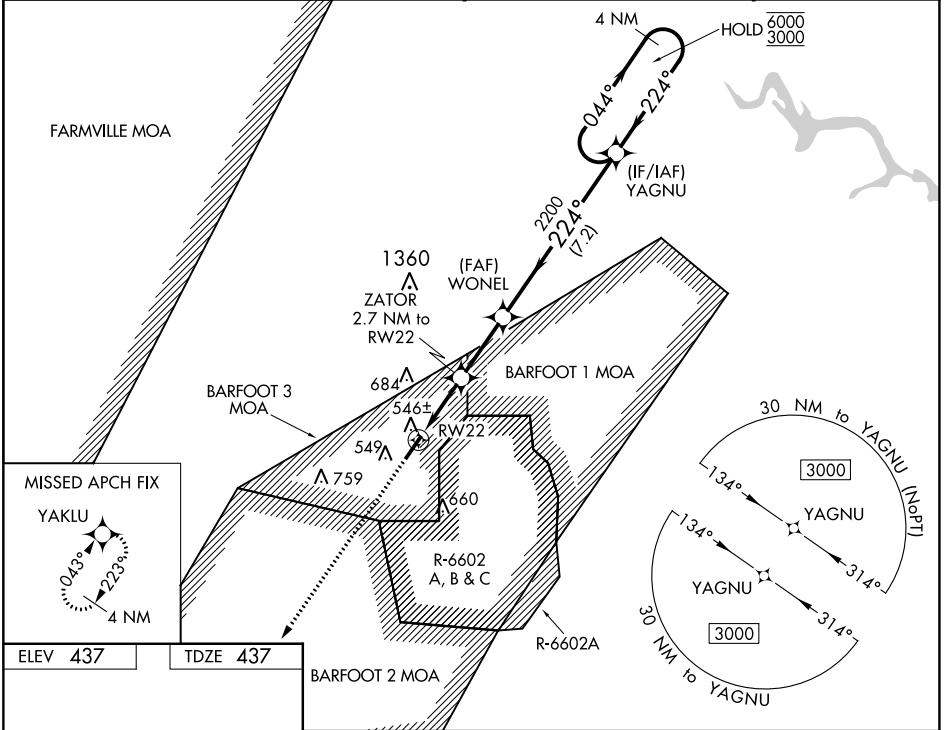
WAAS CH 53734 W22A	APP CRS 224°	Rwy Idg 4633 TDZE 437 Apt Elev 437
--	------------------------	---

RNAV (GPS) RWY 22

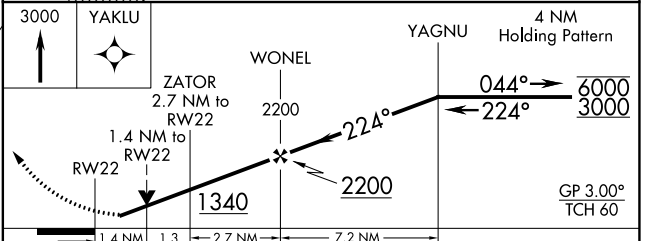
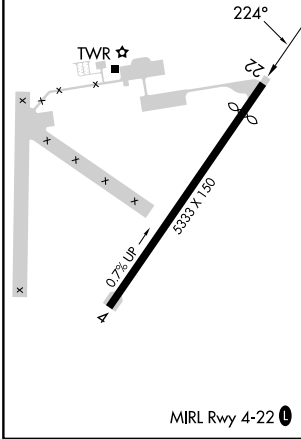
ALLAN C PERKINSON/BLACKSTONE AAF (BKT)

RNP APCH - GPS.		MISSED APPROACH: Climb to 3000 direct YAKLU and hold.	
<p>⚠ For uncompensated Baro-VNAV systems, LNAV/VNAV NA below -1.5°C or above 5.4°C. Circling NA southeast of Rwy 4-22. Rwy 22 helicopter visibility reduction below ¼ SM NA.</p>			

ATIS 119.225	WASHINGTON CENTER 118.75 377.1	BLACKSTONE TOWER ★ 134.7 (CTAF) 0 292.7	GND CON 127.625
------------------------	--	---	---------------------------



ELEV 437	TDZE 437
----------	----------



CATEGORY	A	B	C	D
LPV DA		698-1	261 (300-1)	NA
LNAV/VNAV DA		698-1	261 (300-1)	NA
LNAV MDA	940-1	503 (600-1)	940-1 3/8 503 (600-1 1/8)	NA
ⓐ CIRCLING	940-1	503 (600-1)	1000-1 1/2 563 (600-1 1/2)	NA

NE-3, 26 DEC 2024 to 23 JAN 2025

NE-3, 26 DEC 2024 to 23 JAN 2025