

WAAS CH <b>42934</b> <b>W04A</b>	APP CRS <b>044°</b>	Rwy Idg <b>5333</b> TDZE <b>428</b> Apt Elev <b>437</b>
--	------------------------	---

# RNAV (GPS) RWY 4

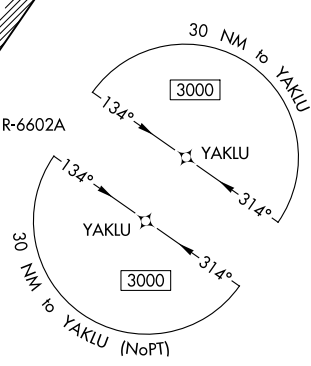
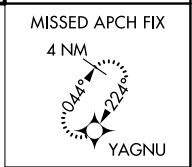
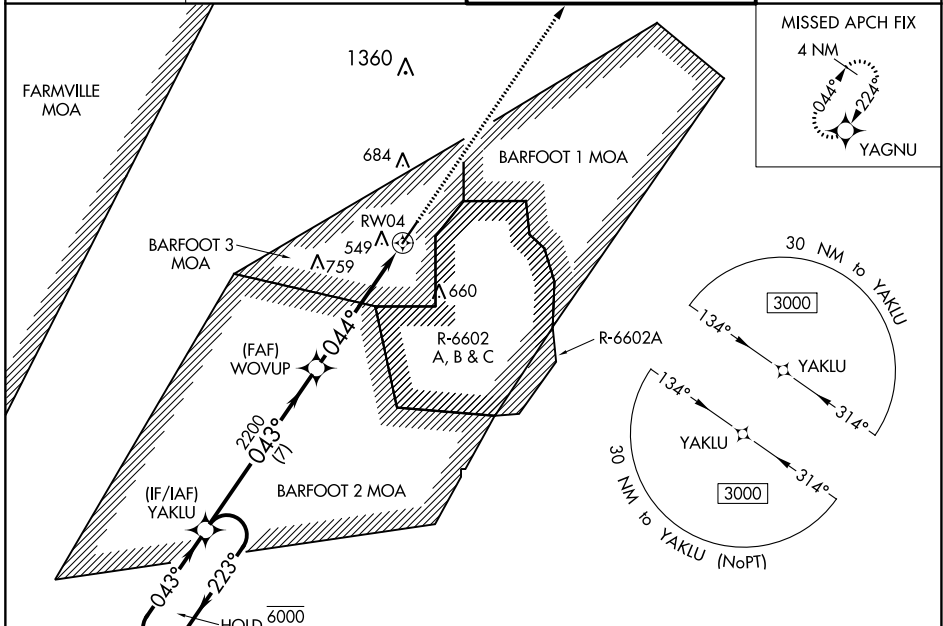
ALLAN C PERKINSON/BLACKSTONE AAF (BKT)

RNP APCH - GPS.

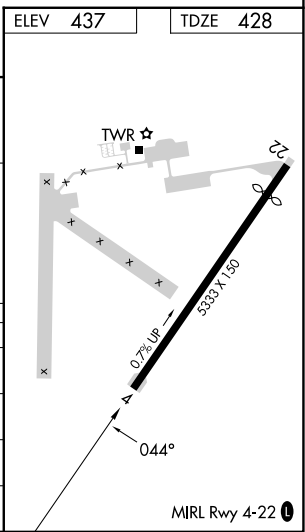
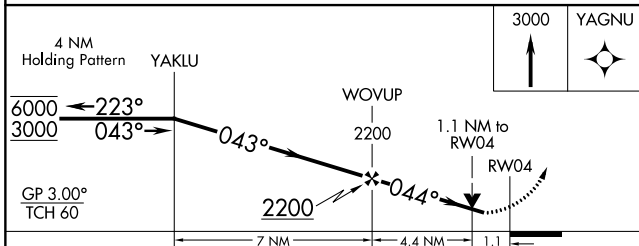
▼ For uncompensated Baro-VNAV systems, LNAV/VNAV NA below -15°C or above 54°C.  
 ▲ Circling NA southeast of Rwy 4-22. Rwy 4 helicopter visibility reduction below ¾ SM NA.

MISSED APPROACH: Climb to 3000 direct YAGNU and hold.

ATIS <b>119.225</b>	WASHINGTON CENTER <b>118.75 377.1</b>	BLACKSTONE TOWER ★ <b>134.7 (CTAF) 0 292.7</b>	GND CON <b>127.625</b>
------------------------	--	---	---------------------------



ELEV <b>437</b>	TDZE <b>428</b>
-----------------	-----------------



CATEGORY	A	B	C	D
LPV DA	717-1	289 (300-1)		NA
LNAV/VNAV DA	699-1	271 (300-1)		NA
LNAV MDA	800-1	372 (400-1)	800-1½ 372 (400-1½)	NA
CIRCLING	860-1 423 (500-1)	900-1 463 (500-1)	1000-1½ 563 (600-1½)	NA

# RNAV (GPS) RWY 4

NE-3, 26 DEC 2024 to 23 JAN 2025

NE-3, 26 DEC 2024 to 23 JAN 2025