

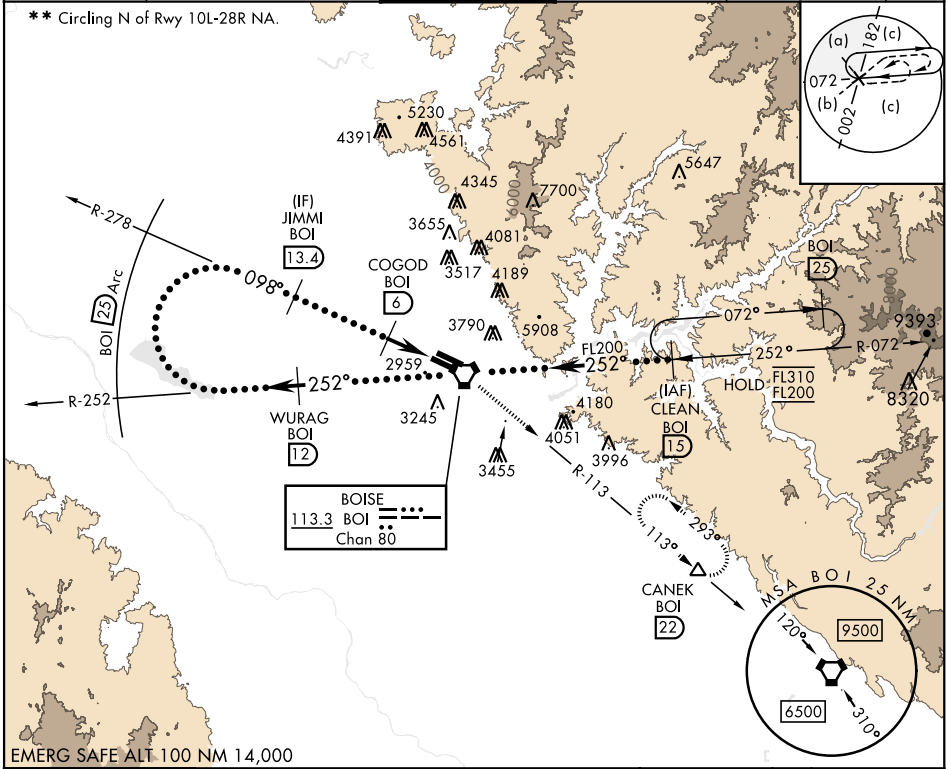
BOISE, IDAHO

# HI-VOR or TACAN RWY 10R

VORTAC BOI <b>113.3</b> Chan <b>80</b>	APCH CRS <b>098°</b>	Rwy Idg TDZE Arprt Elev <b>9763</b> <b>2836</b> <b>2872</b>	AL-57 [USAF]	BOISE AIR TERMINAL (GOWEN FLD) (KBOI)
--	-------------------------	--	--------------	---------------------------------------

DME required.	ALSF-2	MISSED APPROACH: Climb to 7300 on BOI VORTAC R-113 to CANEK/22 DME and hold.
---------------	--------	---

ATIS <b>123.9 290.4</b>	BIG SKY APP CON <b>119.6 269.4</b>	BOISE TOWER <b>118.1 257.8</b>	GND CON <b>121.7 348.6</b>	CLNC DEL <b>125.9 323.2</b>	ASOS
----------------------------	---------------------------------------	-----------------------------------	-------------------------------	--------------------------------	------



NW-1, 26 DEC 2024 to 23 JAN 2025

NW-1, 26 DEC 2024 to 23 JAN 2025

7300 ↑ BOI R-113	CANEK △	VGSI and descent angles not coincident (VGSI Angle 3.0/TCH 64).		ELEV 2872	TDZE 2836
CATEGORY	C	D	E	TDZL/CL Rwy 10R-28L HIRL Rwys 10L-28R, 10R-28L REIL Rwy 10L	
S-10R *	3220/35 384 (400-5%)	3220/35	384 (400-5%)		
CIRCLING **	3740-2 1/4 768 (800-2 1/4)	3820-3 948 (1000-3)	3880-3 1008 (1100-3)		

BOISE, IDAHO 43°34'N-116°13'W BOISE AIR TERMINAL (GOWEN FLD) (KBOI)

# HI-VOR or TACAN RWY 10R