

# RNAV (RNP) X RWY 28R

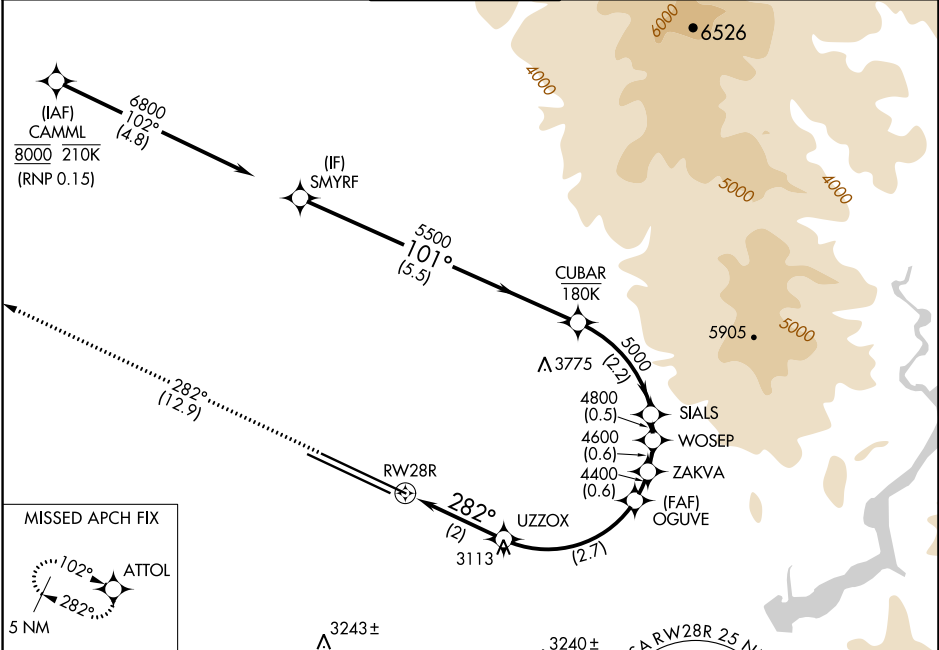
BOISE AIR TRML/GOWEN FLD (BOI)

APP CRS <b>282°</b>	Rwy Idg <b>10000</b>
	TDZE <b>2871</b>
	Apt Elev <b>2871</b>

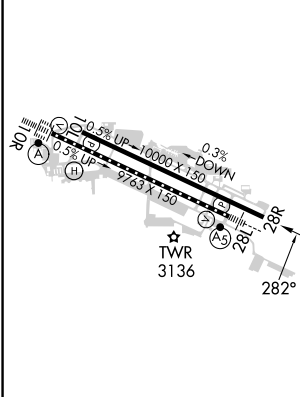
**NA** For uncompensated Baro-VNAV systems, procedure NA below -1.4°C (7°F) or above 52°C (126°F). RF required. GPS required.

**MISSED APPROACH:** Climb to 6000 on track 282° to ATTOL and hold.

D-ATIS <b>123.9 290.4</b>	BIG SKY APP CON <b>119.6 269.4</b>	BOISE TOWER <b>118.1 257.8</b>	GND CON <b>121.7 348.6</b>	CLNC DEL <b>125.9 323.2</b>
------------------------------	---------------------------------------	-----------------------------------	-------------------------------	--------------------------------



ELEV <b>2871</b>	<b>D</b>	TDZE <b>2871</b>
------------------	----------	------------------



6000	ATTOL	VGSI and RNAV glidepath not coincident (VGSI Angle 3.00/TCH 70).				SMYRF
tr 282°		OGUVE	ZAKVA	WOSEP	SIALS	CUBAR
		3548	4400	4600	4800	5000
			4400			5500
						6800
						GP 3.00°
						TCH 55
		2 NM	2.7 NM	0.6 NM	0.6 NM	0.5 NM
					2.2 NM	5.5 NM
CATEGORY	A	B	C	D		
RNP 0.15 DA	3288-1 <sup>3</sup> / <sub>8</sub> 417 (500-1 <sup>3</sup> / <sub>8</sub> )					

REIL Rwy 10L  
TDZ/CL Rwy 10R and 28L  
HIRL Rwy 10L-28R and 10R-28L

NW-1, 26 DEC 2024 to 23 JAN 2025

NW-1, 26 DEC 2024 to 23 JAN 2025