

APP CRS **102°**
 Rwy ldg **10000**
 TDZE **2844**
 Apt Elev **2872**

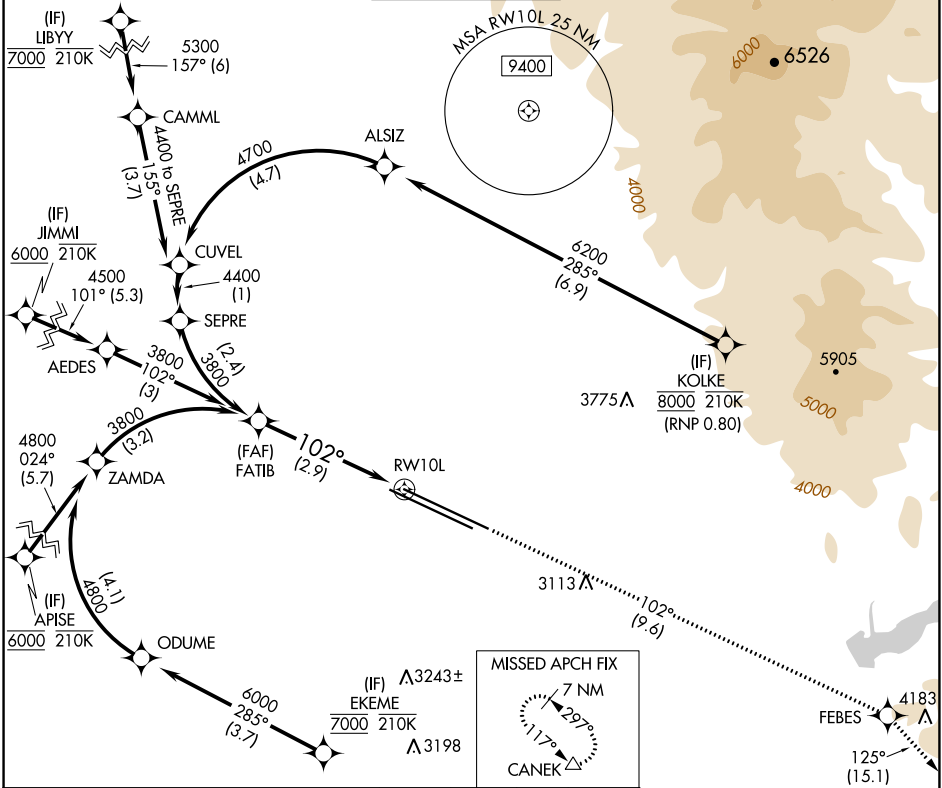
RNAV (RNP) Z RWY 10L

BOISE AIR TRML/GOWEN FLD (BOI)

RNP AR APCH - GPS.
 ▼ For uncompensated Baro-VNAV systems, procedure NA below -1.4°C or above 54°C.

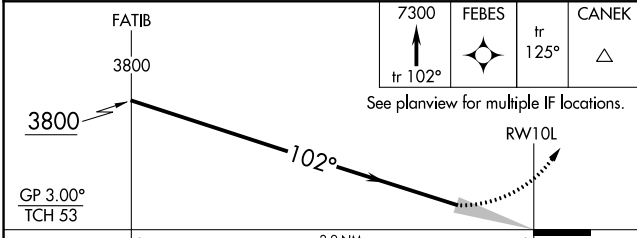
MISSED APPROACH: Climb to 7300 on track 102° to FEBES and on track 125° to CANEK and hold.

D-ATIS 123.9 290.4	BIG SKY APP CON 119.6 269.4	BOISE TOWER 118.1 257.8	GND CON 121.7 348.6	CLNC DEL 125.9 323.2
------------------------------	---------------------------------------	-----------------------------------	-------------------------------	--------------------------------



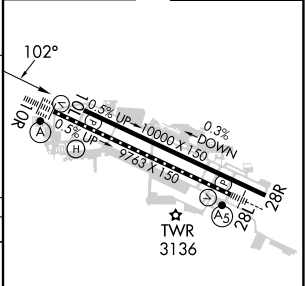
NW-1, 26 DEC 2024 to 23 JAN 2025

NW-1, 26 DEC 2024 to 23 JAN 2025



ELEV 2872 **D** TDZE 2844

CATEGORY	A	B	C	D
RNP 0.30 DA	3237-1 3/8 393 (400-1 1/8)			



AUTHORIZATION REQUIRED

REIL Rwy 10L
 TDZ/CL Rwy 10R and 28L
 HIRL Rwy 10L-28R and 10R-28L