

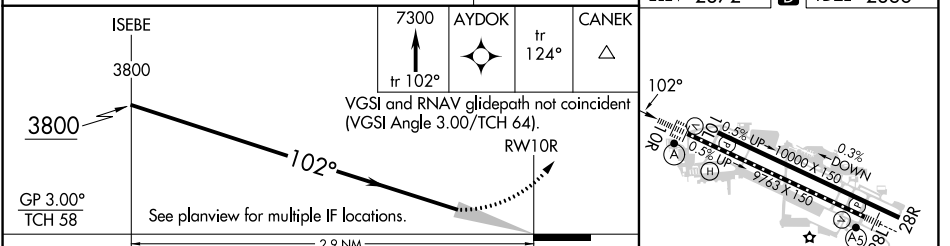
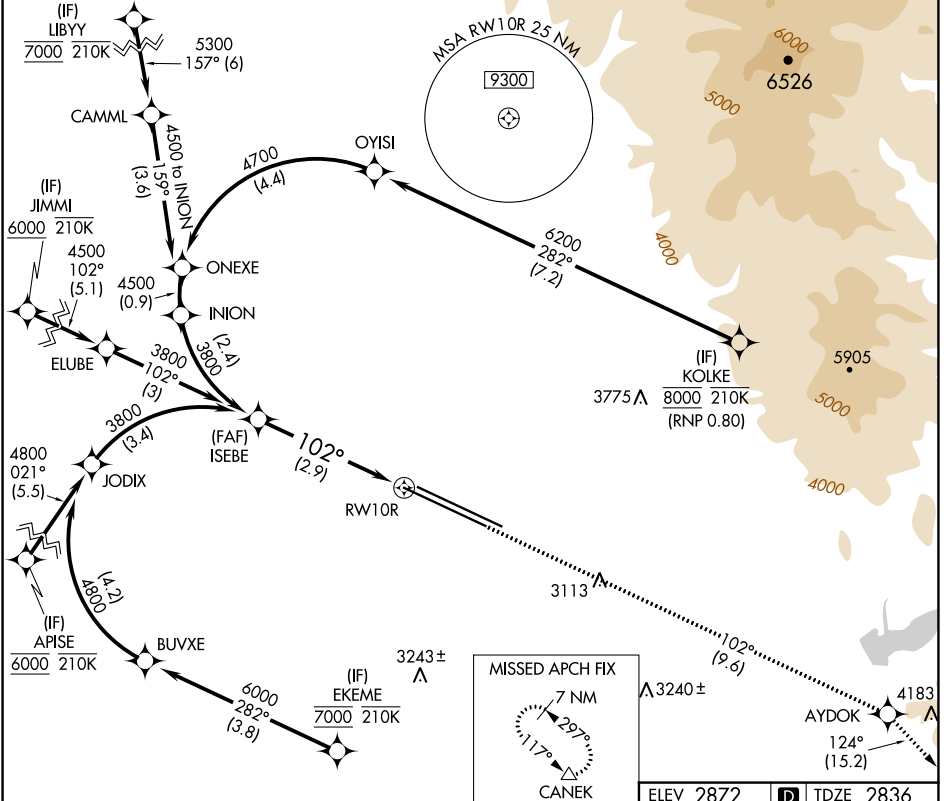
RNAV (RNP) Z RWY 10R

BOISE AIR TRML/GOWEN FLD (BOI)

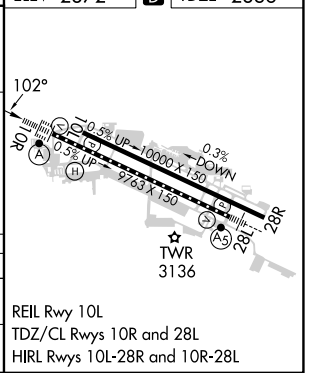
APP CRS	Rwy Idg	9763
102°	TDZE	2836
	Apt Elev	2872

RNP AR APCH - GPS.	ALSF-2	MISSED APPROACH: Climb to 7300 on track 102° to AYDOK and on track 124° to CANEK and hold.
▼ For uncompensated Baro-VNAV systems, procedure NA below -14°C or above 54°C.		

D-ATIS	BIG SKY APP CON	BOISE TOWER	GND CON	CLNC DEL
123.9 290.4	119.6 269.4	118.1 257.8	121.7 348.6	125.9 323.2



CATEGORY	A	B	C	D
RNP 0.30 DA	3219/35		383 (400-5%)	
AUTHORIZATION REQUIRED				



NW-1, 26 DEC 2024 to 23 JAN 2025

NW-1, 26 DEC 2024 to 23 JAN 2025

REIL Rwy 10L
TDZ/CL Rwy 10R and 28L
HIRL Rwy 10L-28R and 10R-28L