

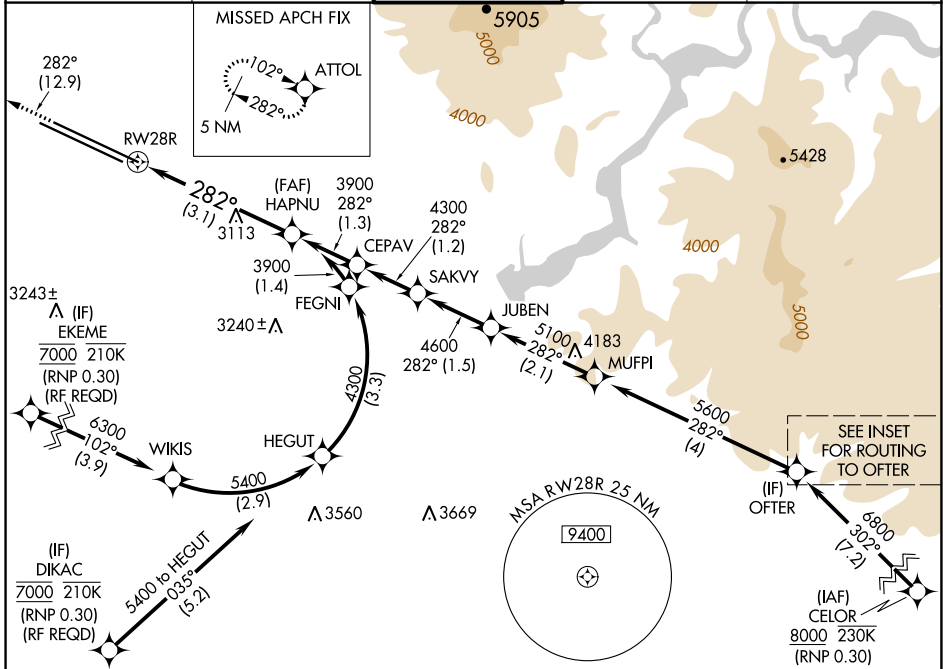
APP CRS <b>282°</b>	Rwy ldg <b>10000</b>
	TDZE <b>2872</b>
	Apt Elev <b>2872</b>

# RNAV (RNP) Z RWY 28R

BOISE AIR TRML/GOWEN FLD (BOI)

RNP AR APCH.	MISSED APPROACH: Climb to 6000 on track 282° to ATTOL and hold, continue climb-in-hold to 6000.
▼ For uncompensated Baro-VNAV systems, procedure NA below -1.5°C or above 54°C.	

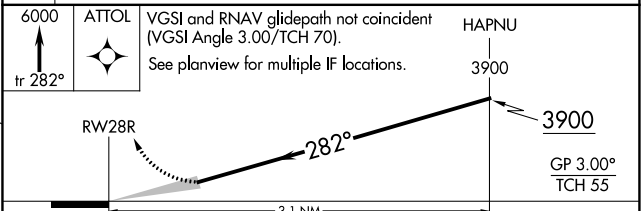
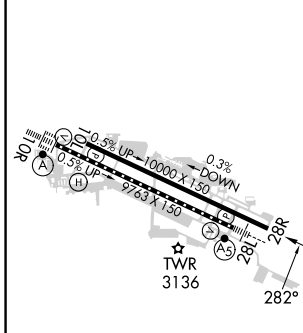
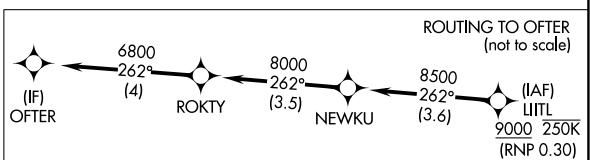
D-ATIS <b>123.9 290.4</b>	BIG SKY APP CON <b>119.6 269.4</b>	BOISE TOWER <b>118.1 257.8</b>	GND CON <b>121.7 348.6</b>	CLNC DEL <b>125.9 323.2</b>
------------------------------	---------------------------------------	-----------------------------------	-------------------------------	--------------------------------



NW-1, 26 DEC 2024 to 23 JAN 2025

NW-1, 26 DEC 2024 to 23 JAN 2025

ELEV <b>2872</b>	<b>D</b>	TDZE <b>2872</b>
------------------	----------	------------------



REIL Rwy 10L				
TDZ/CL Rwys 10R and 28L				
HIRL Rwys 10L-28R and 10R-28L				
CATEGORY	A	B	C	D
RNP 0.15 DA		3204-1	332 (400-1)	
RNP 0.30 DA		3303-1¼	431 (500-1¼)	

## AUTHORIZATION REQUIRED