

LOC/DME I-BOS <b>110.3</b> Chan <b>40</b>	APP CRS <b>035°</b>	Rwy Idg <b>8851</b> TDZE <b>18</b> Apt Elev <b>19</b>
---	------------------------	---

# ILS RWY 4R (CAT II & III)

GENERAL EDWARD LAWRENCE LOGAN INTL (BOS)

RNP APCH - GPS. From GOSHI.  
DME required.

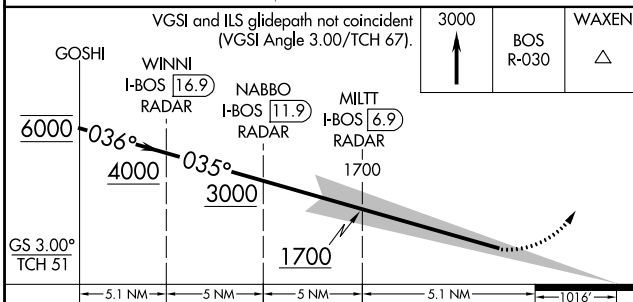
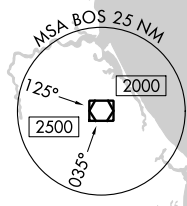
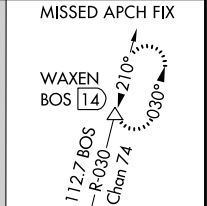
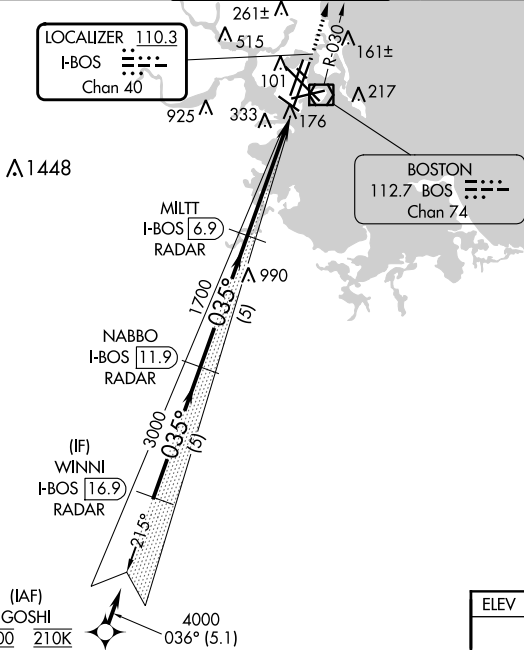
When control tower reports tall vessels in approach area, procedure NA. Simultaneous approach authorized. Simultaneous operations require use of vertical guidance; maintain last assigned altitude until established on glideslope. CAT II: RVR 1000 authorized with specific OPSPEC, MSPEC or LOA approval and use of Autoland or HUD to touchdown.

ALSf-2

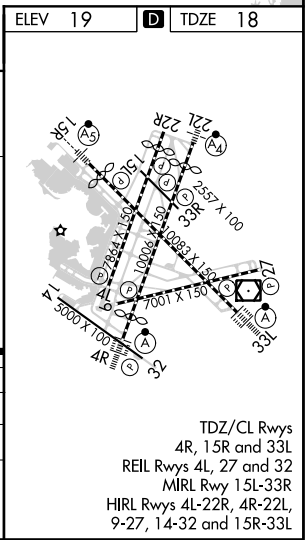


MISSED APPROACH: Climb to 3000 on BOS VOR/DME R-030 to WAXEN/BOS 14 DME and hold.

D-ATIS <b>135.0</b>	BOSTON APP CON <b>120.6 263.1</b>	BOSTON TOWER <b>128.8 257.8 (WEST)</b> <b>132.225 257.8 (EAST)</b>	GND CON <b>121.75 121.9</b>	CLNC DEL <b>121.65 257.8</b>	CPDLC
------------------------	--------------------------------------	--	--------------------------------	---------------------------------	-------



CATEGORY	A	B	C	D
S-ILS 4R	CAT II RA 99/12 100 DA 118			
S-ILS 4R	CAT III RVR 06			



## CATEGORY II & III ILS - SPECIAL AIRCREW & AIRCRAFT CERTIFICATION REQUIRED

NE-1, 26 DEC 2024 to 23 JAN 2025

NE-1, 26 DEC 2024 to 23 JAN 2025