

LOC/DME I-DGU 111.3 Chan 50	APP CRS 272°	Rwy ldg 7001 TDZE 17 Apt Elev 19
---	------------------------	---

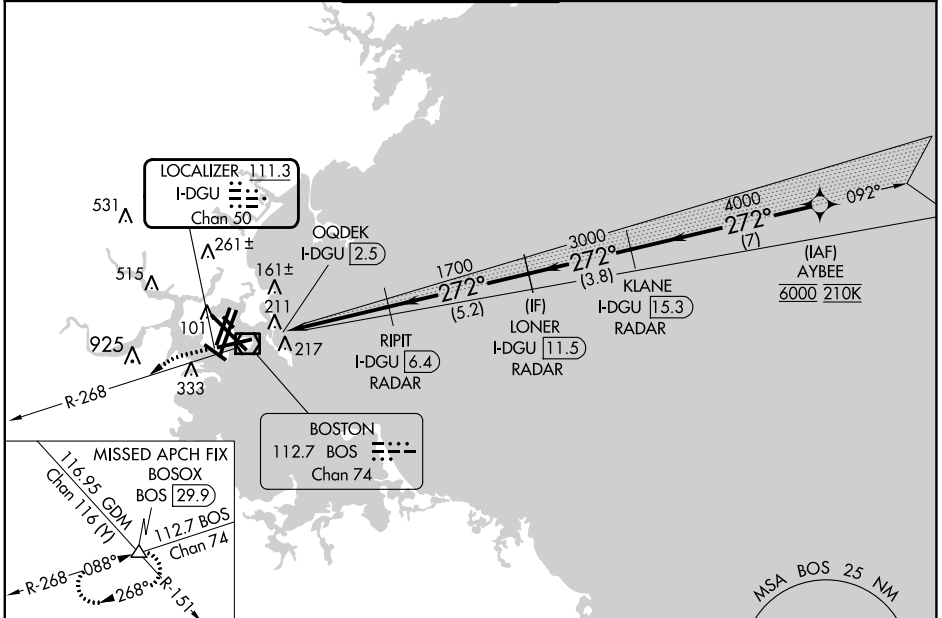
ILS or LOC RWY 27

GENERAL EDWARD LAWRENCE LOGAN INTL (BOS)

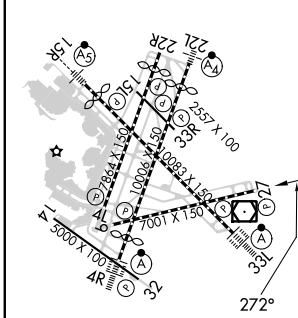
RNP APCH - GPS. From AYBEE.
 RADAR required for procedure entry. DME or RADAR required.
 ▼

MISSED APPROACH: Climb to 3000
 on BOS VOR/DME R-268 to
 BOSOX INT/BOS 29.9 DME and hold.

D-ATIS 135.0	BOSTON APP CON 120.6 263.1	BOSTON TOWER 128.8 257.8 (WEST) 132.225 257.8 (EAST)	GND CON 121.75 121.9	CLNC DEL 121.65 257.8	CPDLC
------------------------	--------------------------------------	--	--------------------------------	---------------------------------	-------



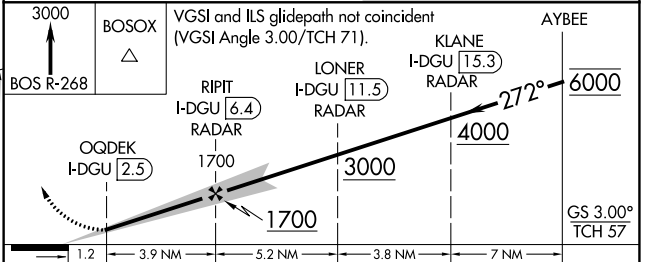
ELEV 19	D	TDZE 17
---------	----------	---------



TDZ/CL Rwy 4R, 15R and 33L
 REIL Rwy 4L, 27 and 32
 MRL Rwy 15L-33R
 HIRL Rwy 4L-22R, 4R-22L,
 9-27, 14-32 and 15R-33L

FAF to MAP 3.9 NM

Knots	60	90	120	150	180
Min:Sec	3:48	2:32	1:54	1:31	1:16



3000	BOSOX	VGSi and ILS glidepath not coincident (VGSi Angle 3.00/TCH 71).		AYBEE
BOS R-268	△	RIPIT I-DGU [6.4] RADAR	LONER I-DGU [11.5] RADAR	KLANE I-DGU [15.3] RADAR
		OQDEK I-DGU [2.5]	1700	3000
			4000	6000
				GS 3.00° TCH 57
		1.2	3.9 NM	5.2 NM
			3.8 NM	7 NM
CATEGORY	A	B	C	D
S-ILS 27	460-1½ 443 (500-1½)			
S-LOC 27	460-1½ 443 (500-1½)			

NE-1, 26 DEC 2024 to 23 JAN 2025

NE-1, 26 DEC 2024 to 23 JAN 2025