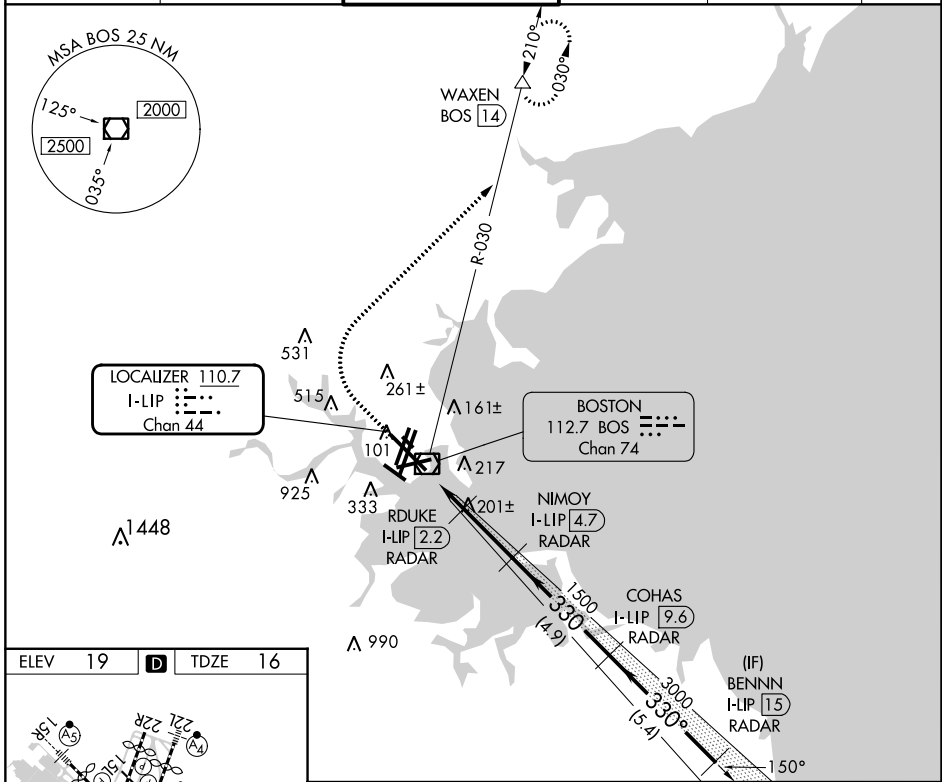


LOC/DME I-LIP 110.7 Chan 44	APP CRS 330°	Rwy Idg 10083 TDZE 16 Apt Elev 19
---	------------------------	--

ILS or LOC RWY 33L

GENERAL EDWARD LAWRENCE LOGAN INTL (BOS)

RADAR required for procedure entry. DME required.		ALSIF-2 	MISSED APPROACH: Climb to 1500 then climbing right turn to 3000 on BOS VOR/DME R-030 to WAXEN/BOS 14 DME and hold.	
D-ATIS 135.0	BOSTON APP CON 120.6 263.1	BOSTON TOWER 128.8 257.8 (WEST) 132.225 257.8 (EAST)	GND CON 121.75 121.9	CLNC DEL 121.65 257.8
				CPDLC



ELEV 19	D	TDZE 16
TDZ/CL Rws 4R, 15R and 33L REIL Rws 4L, 27 and 32 MIRL Rwy 15L-33R HIRL Rws 4L-22R, 4R-22L, 9-27, 14-32 and 15R-33L		
FAF to MAP 4.5 NM		
Knots	60	90 120 150 180
Min:Sec	4:30	3:00 2:15 1:48 1:30

1500	3000	WAXEN △	VGSI and ILS glidepath not coincident (VGSI Angle 3.00°/TCH 68).	
I-LIP 0.2 I-LIP 1.4 I-LIP 2.2 I-LIP 4.7 I-LIP 9.6 I-LIP 15		700 1500 3000 4000 GS 3.00° TCH 57		
CATEGORY		A	B	C
S-ILS 33L		216/18 200 (200-½)		
S-LOC 33L		460/24 444 (500-½)		460/45 444 (500-¾)

NE-1, 26 DEC 2024 to 23 JAN 2025

NE-1, 26 DEC 2024 to 23 JAN 2025