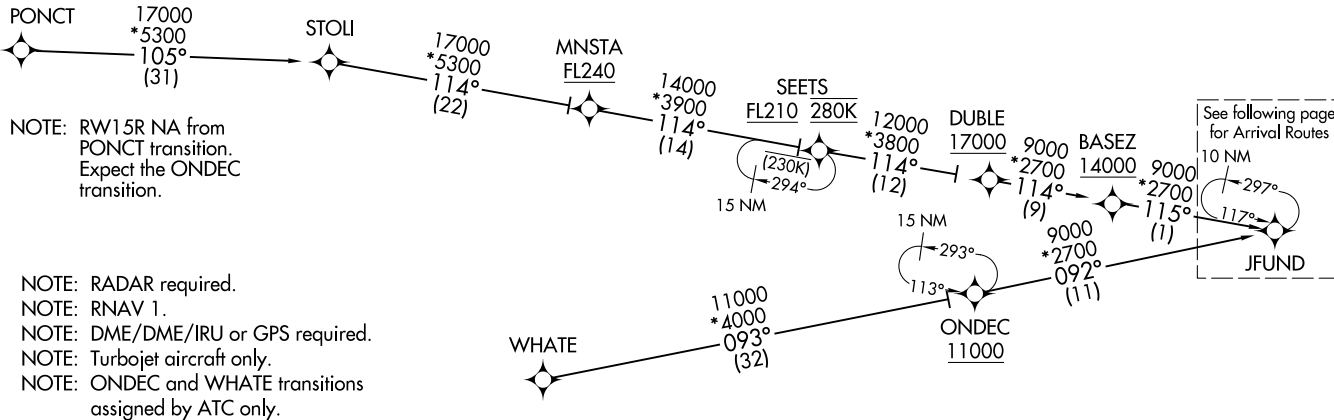


JFUND TWO ARRIVAL (RNAV) Transition Routes
(JFUND.JFUND2) 120CT17

D-ATIS
135.0
BOSTON APP CON
120.6 263.1



See following page for Arrival Routes

NOTE: RW15R NA from PONCT transition. Expect the ONDEC transition.

NOTE: RADAR required.
NOTE: RNAV 1.
NOTE: DME/DME/IRU or GPS required.
NOTE: Turbojet aircraft only.
NOTE: ONDEC and WHATE transitions assigned by ATC only.

N

NOTE: Not to scale.

(CONTINUED ON FOLLOWING PAGE)

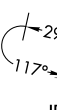
ONDEC TRANSITION (ONDEC.JFUND2):
PONCT TRANSITION (PONCT.JFUND2)
WHATE TRANSITION (WHATE.JFUND2):

(JFUND.JFUND2) 21158
GENERAL EDWARD LAWRENCE LOGAN INTL (BOS)
AL-58 (FAA) BOSTON, MASSACHUSETTS

JFUND TWO ARRIVAL (RNAV) Arrival Routes
(JFUND.JFUND2) 1200CT17
BOSTON, MASSACHUSETTS
GENERAL EDWARD LAWRENCE LOGAN INTL (BOS)

D-ATIS
135.0
BOSTON APP CON
120.6 263.1

10 NM



- NOTE: RADAR required.
- NOTE: RNAV 1.
- NOTE: DME/DME/IRU or GPS required.
- NOTE: Turbojet aircraft only.
- NOTE: ONDEC and WHATE transitions assigned by ATC only.

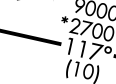


NOTE: Not to scale.

WACHU
7000 210K



BADCA
9000 250K



AUTUM
12000 270K
11000



5000 SSAAM *1700
121° (4) *1700 148°



WINTA
10000 250K
8000



NOTE: RW15R NA from
PONCT transition.
Expect the ONDEC
transition.

ISLAY
6000 220K



HRRIS
112° 4000
*1700 (6)



SPYSD
7000 220K



GGABE
6000 220K



JOBEE
6000 210K

LWLND
6000 210K



REVER
4000 *1500
115° (8)



BRODI
6000



GRIFI
4000 *1500
160° (2)



SCITU
5000 210K



SEHAG
6000 210K



BECHH
5000 220K



GGABE
6000 220K



(NARRATIVE ON FOLLOWING PAGE)

(JFUND.JFUND2) 21056
GENERAL EDWARD LAWRENCE LOGAN INTL (BOS)
BOSTON, MASSACHUSETTS
GENERAL EDWARD LAWRENCE LOGAN INTL (BOS)
AL-58 (FAA)

ARRIVAL ROUTE DESCRIPTION

LANDING RUNWAY 4R/L: From JFUND on track 117° to cross AUTUM between 11000 and 12000 and at 270K, then on track 121° to cross WINTA between 8000 and 10000 and at 250K, then on track 120° to HRRIS, then on track 112° to cross SPYSD at 7000 and at 220K, then on track 170° to GRIFI, then on track 213° to cross GGABE at 6000 and at 220K, then on track 213° to cross JOBEE at 6000 and at 210K, then on track 213°. Expect RADAR vectors to final approach course.

LANDING RUNWAY 15R: From JFUND on track 090° to cross BADCA at or above 9000 and at 250K, then on track 090° to cross WACHU at 7000 and at 210K, then on track 121° to SSAAM, then on track 148° to AADMS, then on track 148°. Expect RADAR vectors to final approach course.

LANDING RWY 22R/L: From JFUND on track 117° to cross AUTUM between 11000 and 12000 and at 270K, then on track 121° to cross WINTA between 8000 and 10000 and at 250K, then on track 120° to HRRIS, then on track 079° to cross ISLAY at 6000 and at 220K, then on track 035° to cross LWLND at 6000 and at 210K, then on track 035°. Expect RADAR vectors to final approach course.

LANDING RUNWAY 27: From JFUND on track 117° to cross AUTUM between 11000 and 12000 and at 270K, then on track 121° to cross WINTA between 8000 and 10000 and at 250K, then on track 120° to HRRIS, then on track 112° to cross SPYSD at 7000 and at 220K, then on track 115° to REVER, then on track 093° to cross SEHAG at 6000 and at 210K, then on track 093°. Expect RADAR vectors to final approach course.

LANDING RUNWAYS 32, 33L: From JFUND on track 117° to cross AUTUM between 11000 and 12000 and at 270K, then on track 121° to cross WINTA between 8000 and 10000 and at 250K, then on track 120° to HRRIS, then on track 112° to cross SPYSD at 7000 and at 220K, then on track 144° to cross BRODI at or below 6000, then on track 144° to cross BECHH at 5000 and at 220K, then on track 150° to cross SCITU at 5000 and at 210K, then on track 150°. Expect RADAR vectors to final approach course.

NE-1, 26 DEC 2024 to 23 JAN 2025

NE-1, 26 DEC 2024 to 23 JAN 2025