

APP CRS 272°	Rwy Idg TDZE Apt Elev	7001 17 19
------------------------	-----------------------------	---------------------------------------

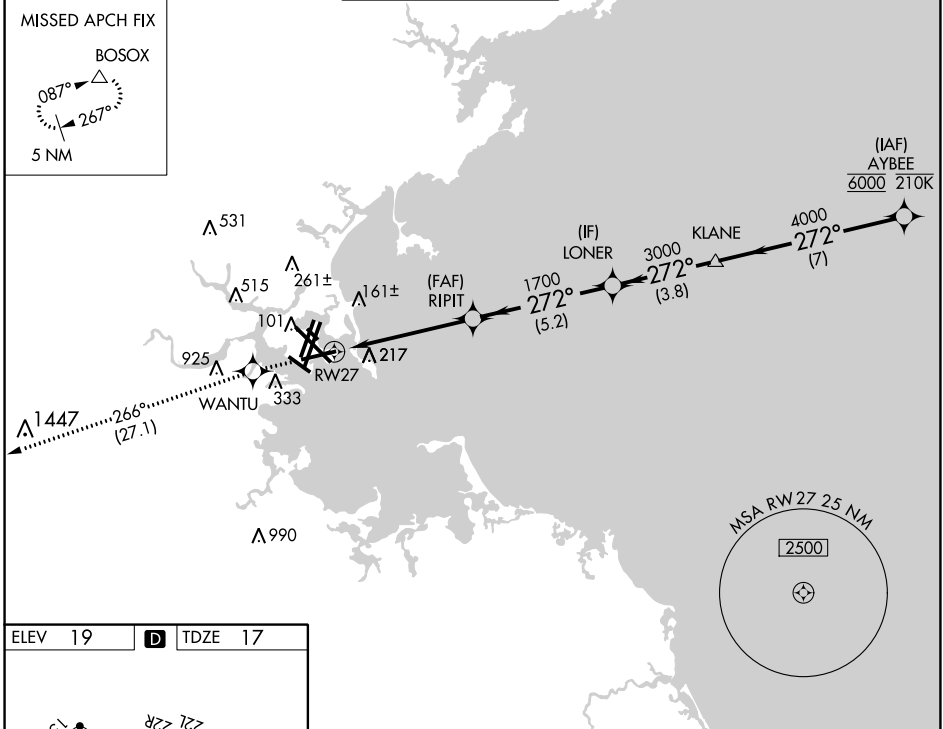
RNAV (GPS) RWY 27
GENERAL EDWARD LAWRENCE LOGAN INTL (BOS)

RNP APCH - GPS.

▼ For uncompensated Baro-VNAV systems, LNAV/VNAV NA below -15°C or above 54°C.

MISSED APPROACH: Climb to 3000
direct WANTU and on track 266°
to BOSOX and hold.

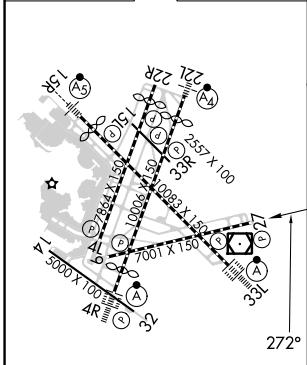
D-ATIS 135.0	BOSTON APP CON 120.6 263.1	BOSTON TOWER 128.8 257.8 (WEST) 132.225 257.8 (EAST)	GND CON 121.75 121.9	CLNC DEL 121.65 257.8	CPDLC
------------------------	--------------------------------------	--	--------------------------------	---------------------------------	-------



NE-1, 26 DEC 2024 to 23 JAN 2025

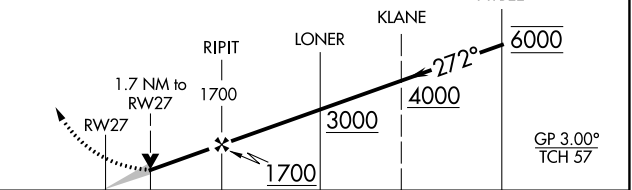
NE-1, 26 DEC 2024 to 23 JAN 2025

ELEV 19	D	TDZE 17
---------	----------	---------



TDZ/CL Rwy 4R, 15R and 33L
REIL Rwy 4L, 27 and 32
MIRL Rwy 15L-33R
HIRL Rwy 4L-22R, 4R-22L, 9-27, 14-32 and 15R-33L

3000	WANTU	tr 266°	BOSOX	VGSI and RNAV glidepath not coincident (VGSI Angle 3.00/TCH 71).
------	-------	---------	-------	--



CATEGORY	A	B	C	D
LNAV/VNAV DA	510-1¾ 493 (500-1¾)			
LNAV MDA	640-1½ 623 (700-1½)		640-1¾ 623 (700-1¾)	