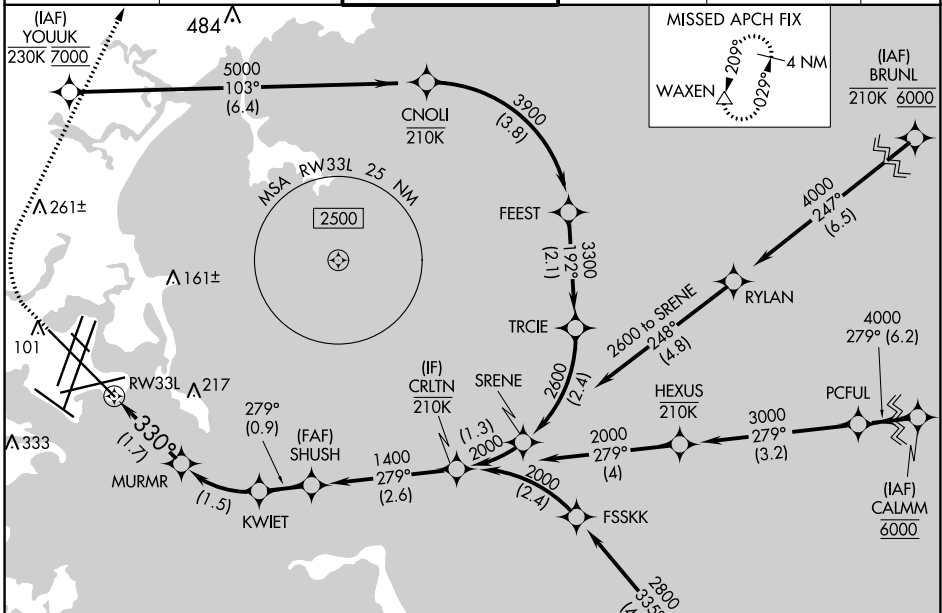


APP CRS	Rwy ldg	<b>10083</b>
<b>330°</b>	TDZE	<b>16</b>
	Apt Elev	<b>19</b>

# RNAV (RNP) X RWY 33L

GENERAL EDWARD LAWRENCE LOGAN INTL (BOS)

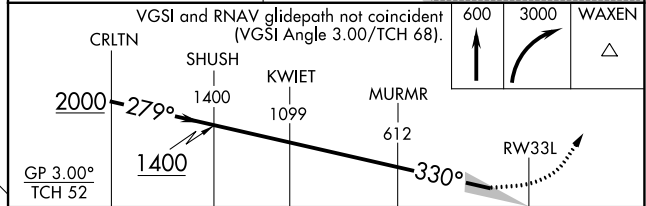
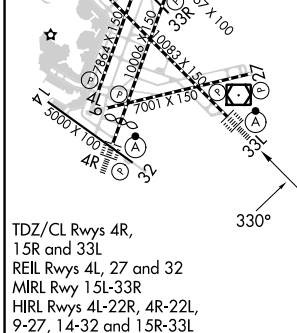
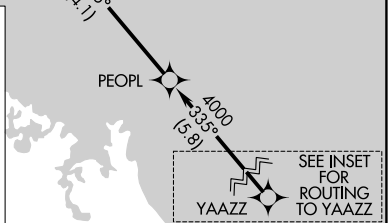
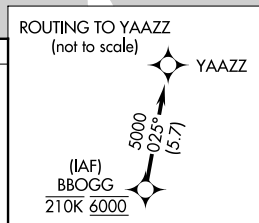
RNP AR APCH. RF required.		ALSF-2		MISSED APPROACH: Climb to 600 then climbing right turn to 3000 direct WAXEN and hold.	
<p>▼ For uncompensated Baro-VNAV systems, procedure NA below -14°C or above 54°C. For inop ALS, increase RNP 0.30 all Cnts visibility to RVR 4000.</p> <p>▲ NA</p>		<p>BOSTON TOWER</p> <p><b>128.8 257.8 (WEST)</b></p> <p><b>132.225 257.8 (EAST)</b></p>		<p>GND CON</p> <p><b>121.75 121.9</b></p>	
<p>D-ATIS</p> <p><b>135.0</b></p>		<p>BOSTON APP CON</p> <p><b>120.6 263.1</b></p>		<p>CLNC DEL</p> <p><b>121.65 257.8</b></p>	
				<p>CPDLC</p>	



NE-1, 26 DEC 2024 to 23 JAN 2025

NE-1, 26 DEC 2024 to 23 JAN 2025

ELEV	19	TDZE	16
------	----	------	----



CATEGORY	A	B	C	D
RNP 0.30 DA	273/24		257 (300-½)	

## AUTHORIZATION REQUIRED