

(LOSST.LOSST1) 24193

LOSST ONE ARRIVAL (RNAV)

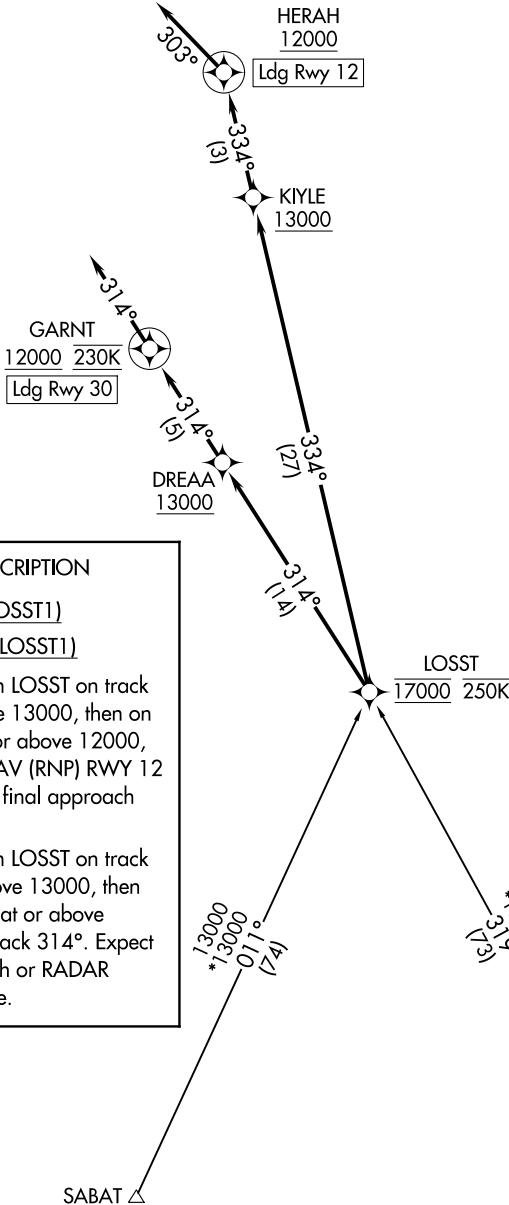
BOZEMAN YELLOWSTONE INTL (BZN)

BOZEMAN, MONTANA

AL-59 (FAA)

BIG SKY APP CON★
 118.975 226.675
 SALT LAKE CENTER
 118.975 226.675
 ATIS
 135.425
 GND CON
 121.8
 BOZEMAN TOWER★
 118.2

RNAV 1 - GPS.
RADAR required.



ARRIVAL ROUTE DESCRIPTION

SABAT TRANSITION (SABAT.LOSST1)

TOCUD TRANSITION (TOCUD.LOSST1)

LANDING RUNWAY 12: From LOSST on track 334° to cross KIYLE at or above 13000, then on track 334° to cross HERAH at or above 12000, then on track 303°. Expect RNAV (RNP) RWY 12 approach or RADAR vectors to final approach course.

LANDING RUNWAY 30: From LOSST on track 314° to cross DREAA at or above 13000, then on track 314° to cross GARNT at or above 12000 and at 230K, then on track 314°. Expect RNAV (RNP) RWY 30 approach or RADAR vectors to final approach course.

NOTE: GPS required.

NOTE: Chart not to scale.

LOSST ONE ARRIVAL (RNAV)

(LOSST.LOSST1) 11JUL24

BOZEMAN, MONTANA
BOZEMAN YELLOWSTONE INTL (BZN)

NW-1, 26 DEC 2024 to 23 JAN 2025

NW-1, 26 DEC 2024 to 23 JAN 2025