

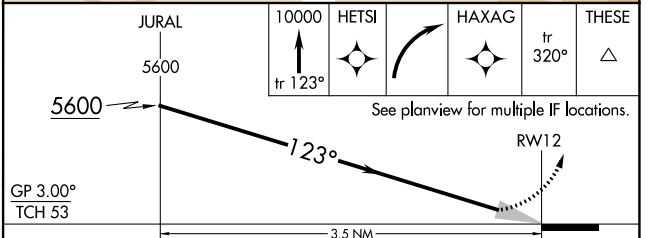
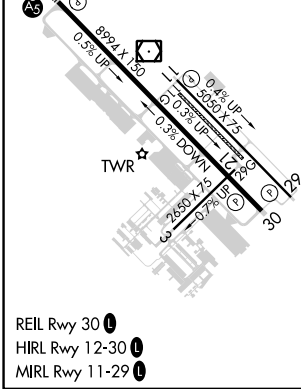
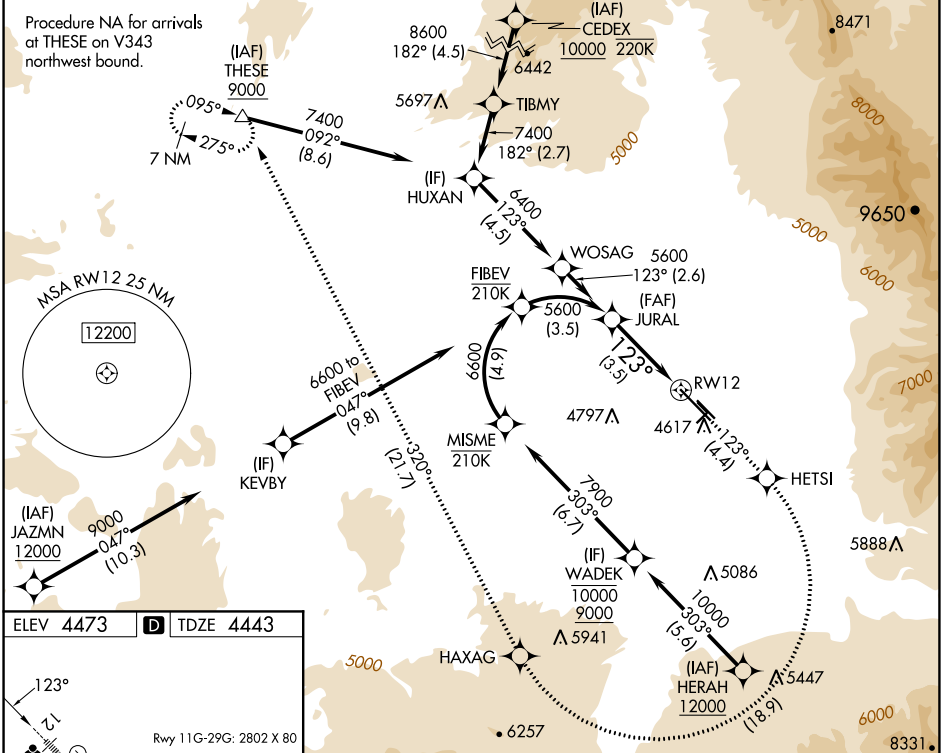
APP CRS	Rwy Idg	<b>8994</b>
<b>123°</b>	TDZE	<b>4443</b>
	Apt Elev	<b>4473</b>

# RNAV (RNP) Z RWY 12

## BOZEMAN YELLOWSTONE INTL (BZN)

RNP AR APCH - GPS.		MALSR	MISSED APPROACH: Climb to 10000 on track 123° to HETSI, and right turn to HAXAG, and on track 320° to THESE and hold.
<p>▼ For uncompensated Baro-VNAV systems, procedure NA below -29°C or above 54°C. When local altimeter setting not received, procedure NA. For inop ALS, increase RNP 0.10 visibility to 7/8 SM and RNP 0.30 visibility to 1 SM.</p>			

ATIS <b>135.425</b>	BIG SKY APP CON★ <b>118.975 226.675</b>	BOZEMAN TOWER★ <b>118.2 (CTAF) 0</b>	GND CON <b>121.8</b>	UNICOM <b>122.95</b>
------------------------	--	---	-------------------------	-------------------------



GP 3.00°	TCH 53	3.5 NM			
CATEGORY	A	B	C	D	
RNP 0.10 DA		4723-1/2	280 (300-1/2)		
RNP 0.30 DA		4795-5/8	352 (400-5/8)		

**AUTHORIZATION REQUIRED**

NW-1, 26 DEC 2024 to 23 JAN 2025

NW-1, 26 DEC 2024 to 23 JAN 2025