

APP CRS 303°	Rwy Idg TDZE Apt Elev	8994 4462 4473
------------------------	-----------------------------	---

RNAV (RNP) Z RWY 30

BOZEMAN YELLOWSTONE INTL (BZN)

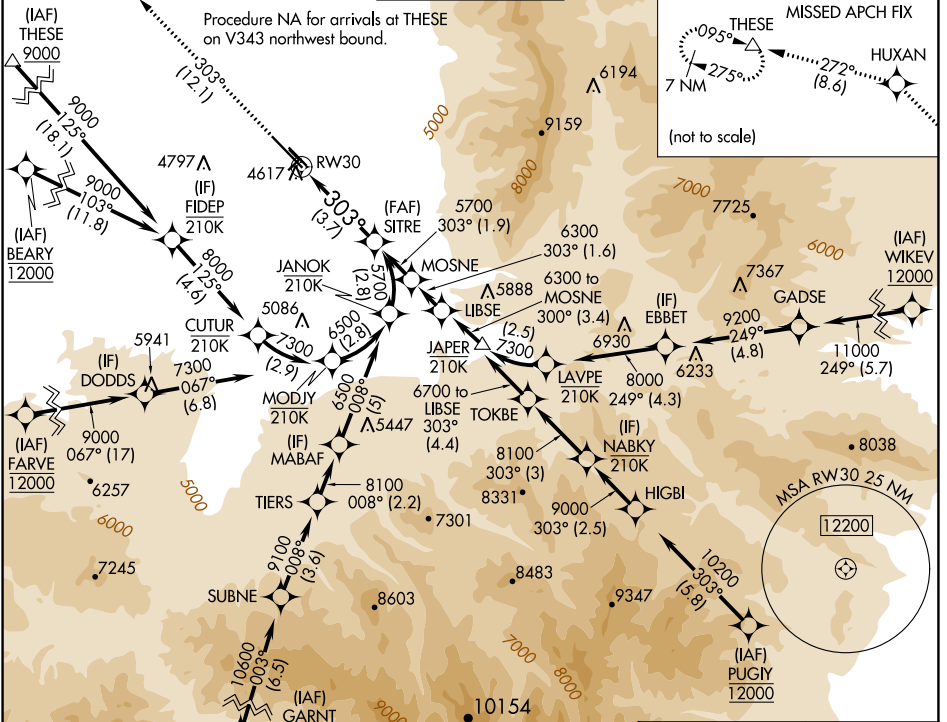
RNP AR APCH - GPS.

⚠ For uncompensated Baro-VNAV systems, procedure NA below -27°C or above 54°C. When local altimeter setting not received, procedure NA.

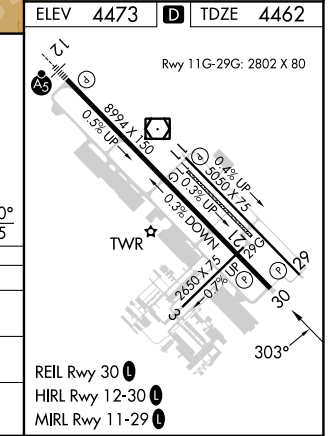
📶 -22°C

MISSED APPROACH: Climb to 10000 on track 303° to HUXAN and on track 272° to THESE and hold, continue climb-in-hold to 10000.

ATIS 135.425	BIG SKY APP CON ★ 118.975 226.675	BOZEMAN TOWER ★ 118.2 (CTAF) 0	GND CON 121.8	UNICOM 122.95
------------------------	---	--	-------------------------	-------------------------



ELEV 10000	HUXAN	THESE	SITRE
↑ tr 303°	✧ tr 272°	△	5700
See planview for multiple IF locations.			
RW30		3.7 NM	
GP 3.00°		TCH 45	
CATEGORY	A	B	C
RNP 0.11 DA	4806-1		344 (400-1)
RNP 0.30 DA	4885-1¼		423 (500-1¼)
AUTHORIZATION REQUIRED			



NW-1, 26 DEC 2024 to 23 JAN 2025

NW-1, 26 DEC 2024 to 23 JAN 2025