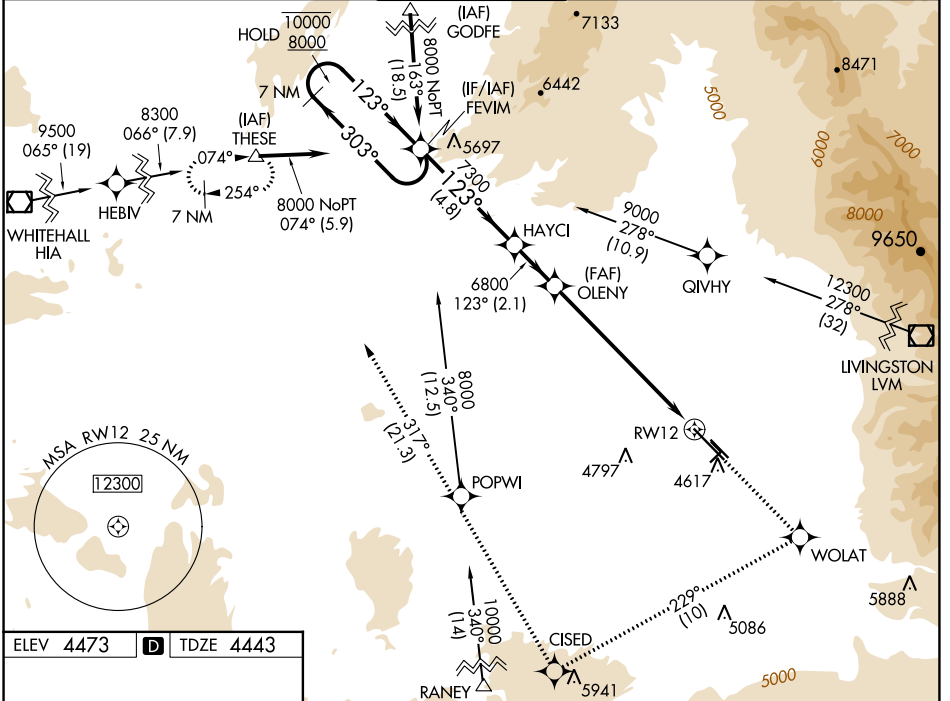


WAAS CH 72816 W12A	APP CRS 123°	Rwy Idg TDZE Apt Elev	8994 4443 4473
--	------------------------	-----------------------------	---

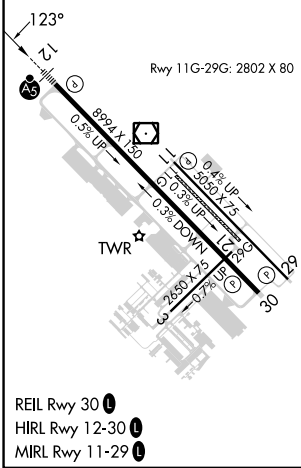
RNAV (GPS) Y RWY 12

BOZEMAN YELLOWSTONE INTL (BZN)

RNP APCH.		MALSR	MISSED APPROACH: Climb to 8300 direct WOLAT and right turn on track 229° to CISED and on track 317° to THESE and hold.	
<p>⚠ Circling NA to Rwys 3-21 and 11-29. For uncompensated Baro-VNAV systems, procedure NA below -23°C or above 49°C. For inop ALS, increase</p> <p>⚠ -22°C LNAV/VNAV visibility to 1 1/8 SM and LNAV visibility Cats C and D to 1 1/8 SM.</p>				
ATIS 135.425	BIG SKY APP CON* 118.975 226.675	BOZEMAN TOWER* 118.2 (CTAF) 0	GND CON 121.8	UNICOM 122.95



ELEV 4473	D	TDZE 4443
-----------	----------	-----------



	FEVIM	8300	WOLAT	CISED	THESE
	7 NM Holding Pattern	↑	✧	tr 229°	✧ tr 317°
	10000 ← 303°	HAYCI	OLENY	* LNAV only	
	8000 → 123°		6800	* 1.5 NM to RW12	
	GP 3.00°		6800	RW12	
	TCH 53	4.8 NM	2.1 NM	5.7 NM	1.5 NM
CATEGORY	A	B	C	D	
LPV DA		4693-1/2	250 (300-1/2)		
LNAV/VNAV DA		5094-1 3/4	651 (700-1 3/4)		
LNAV MDA	4960-1/2	517 (500-1/2)	4960-1 517 (500-1)	4960-1 1/4 517 (500-1 1/4)	
C CIRCLING	4960-1	487 (500-1)	5160-2 687 (700-2)	5360-3 887 (900-3)	

NW-1, 26 DEC 2024 to 23 JAN 2025

NW-1, 26 DEC 2024 to 23 JAN 2025