

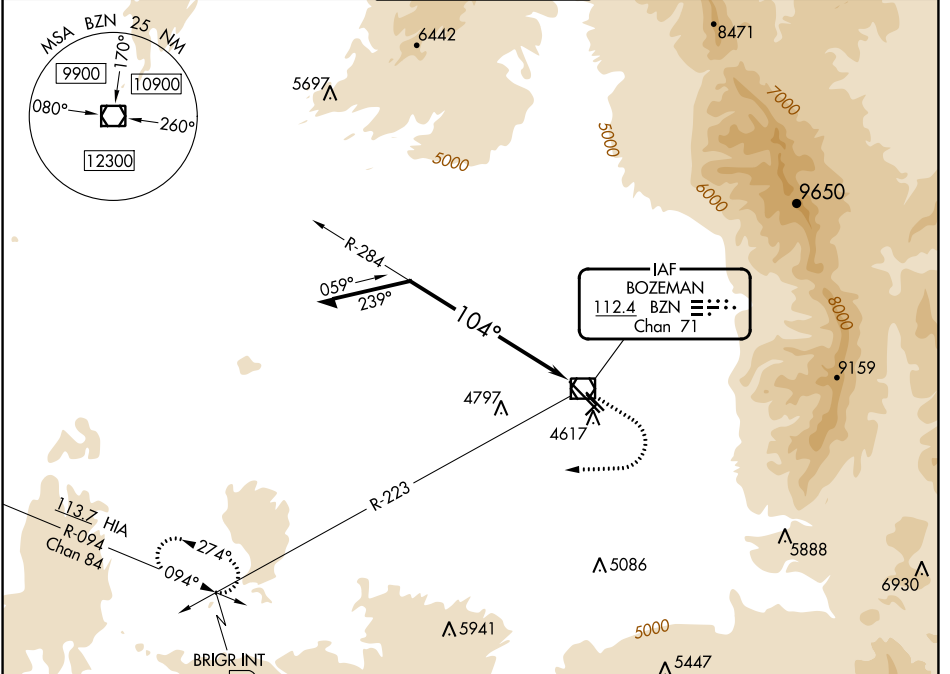
VOR/DME BZN <b>112.4</b> Chan 71	APP CRS <b>104°</b>	Rwy Idg TDZE Apt Elev <b>8994</b> <b>4443</b> <b>4473</b>
--	------------------------	--

# VOR RWY 12

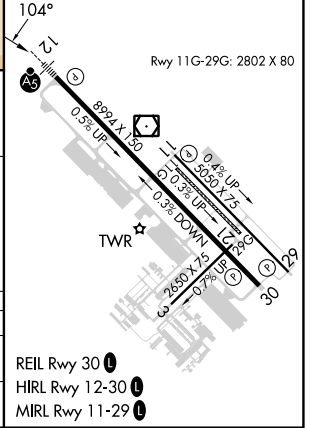
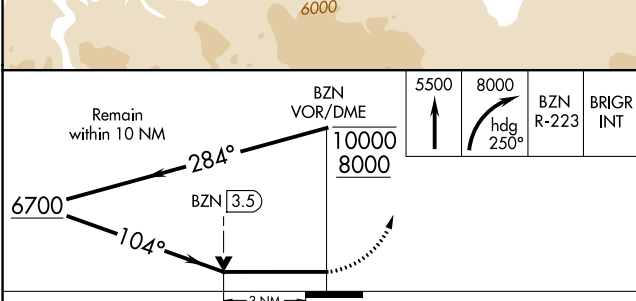
BOZEMAN YELLOWSTONE INTL (BZN)

	Circling NA to Rwys 3-21 and 11-29. Inop table does not apply.		MISSED APPROACH: Climb to 5500 then climbing right turn to 8000 on heading 250° and BZN VOR/DME R-223 to BRIGR INT/15 DME and hold.
--	---	--	---

ATIS <b>135.425</b>	BIG SKY APP CON* <b>118.975 226.675</b>	BOZEMAN TOWER* <b>118.2 (CTAF) 0</b>	GND CON <b>121.8</b>	UNICOM <b>122.95</b>
------------------------	--	---	-------------------------	-------------------------



ELEV 4473	TDZE 4443
-----------	-----------



CATEGORY	A	B	C	D
S-12	5440-1¼ 997 (1000-1¼)	5440-1½ 997 (1000-1½)	5440-3	997 (1000-3)
CIRCLING	5440-1¼ 967 (1000-1¼)	5440-1½ 967 (1000-1½)	5440-3	967 (1000-3)

NW-1, 26 DEC 2024 to 23 JAN 2025

NW-1, 26 DEC 2024 to 23 JAN 2025