

LOC/DME I-BRO <b>110.3</b> Chan 40	APP CRS <b>132°</b>	Rwy Idg <b>7399</b> TDZE <b>19</b> Apt Elev <b>22</b>
--	------------------------	---

# ILS or LOC RWY 13

BROWNSVILLE/SOUTH PADRE ISLAND INTL (BRO)

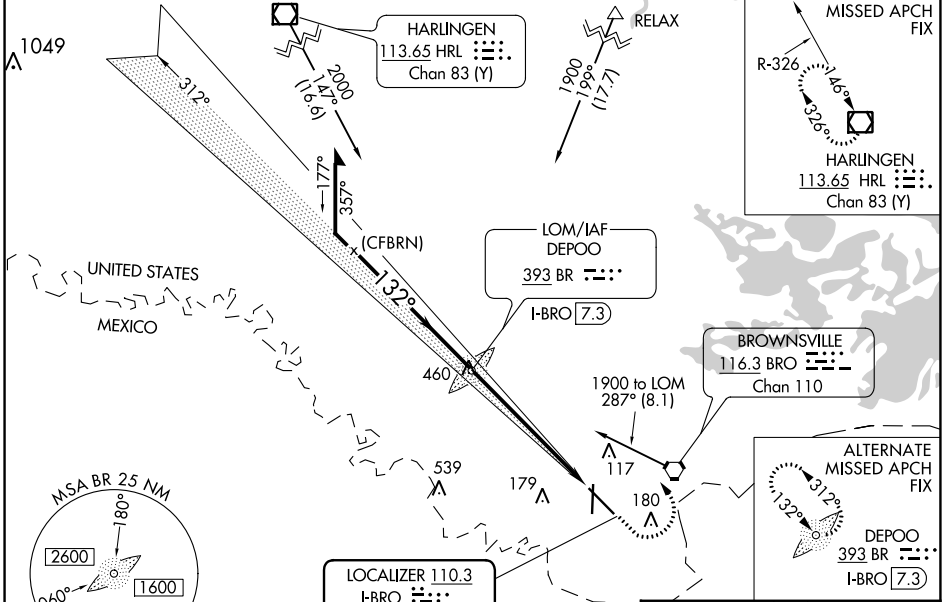
ADF or RADAR required.

**⚠** VDP NA when using Port Isabel altimeter setting. For inop ALS increase S-LOC 13 Cats C and D visibility to 1 3/8 miles. When local altimeter setting not received, use Port Isabel altimeter setting and increase DA to 307 feet and all MDA 40 feet. S-LOC 13 Cat C and D visibility to RVR 5500, Circling Cat D visibility to 2 1/4 miles. For inop ALS when using Port Isabel altimeter setting increase S-LOC 13 Cats C/D visibility to 1 3/8 miles.

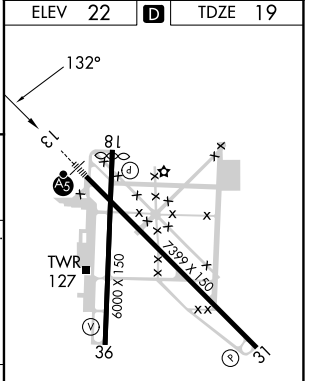
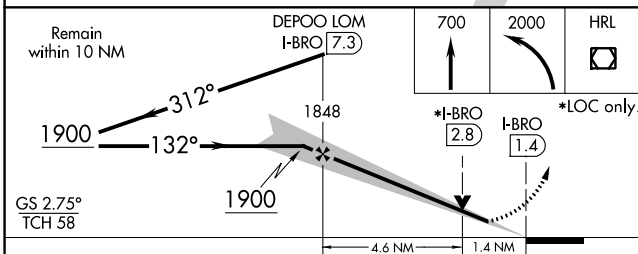
**MALSR**  
AS

**MISSED APPROACH:**  
Climb to 700 then climbing left turn to 2000 direct HRL VOR/DME and hold.

ATIS <b>128.55</b>	VALLEY APP CON <b>119.5 257.6</b>	<b>BROWNSVILLE TOWER * 118.9 (CTAF) 239.3</b>	GND CON <b>121.9</b>	UNICOM <b>122.95</b>
-----------------------	--------------------------------------	---	-------------------------	-------------------------



ELEV <b>22</b>	<b>D</b>	TDZE <b>19</b>
----------------	----------	----------------



CATEGORY	A	B	C	D
S-ILS 13		269/24	250 (300-1/2)	
S-LOC 13	480/24	461 (500-1/2)	480/50	461 (500-1)
<b>C</b> CIRCLING	480-1 458 (500-1)	540-1 518 (600-1)	540-1 1/2 518 (600-1 1/2)	680-2 658 (700-2)

MIRL Rwy 18-36  
HIRL Rwy 13-31

FAF to MAP 6 NM

Knots	60	90	120	150	180
Min:Sec	6:00	4:00	3:00	2:24	2:00

SC-3, 26 DEC 2024 to 23 JAN 2025

SC-3, 26 DEC 2024 to 23 JAN 2025