

LOC/DME I-BRO 110.3 Chan 40	APP CRS 312°	Rwy Idg 7399 TDZE 20 Apt Elev 22
---	------------------------	---

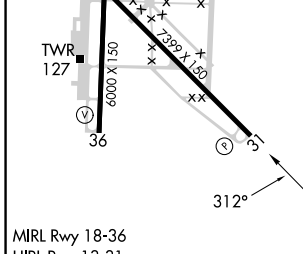
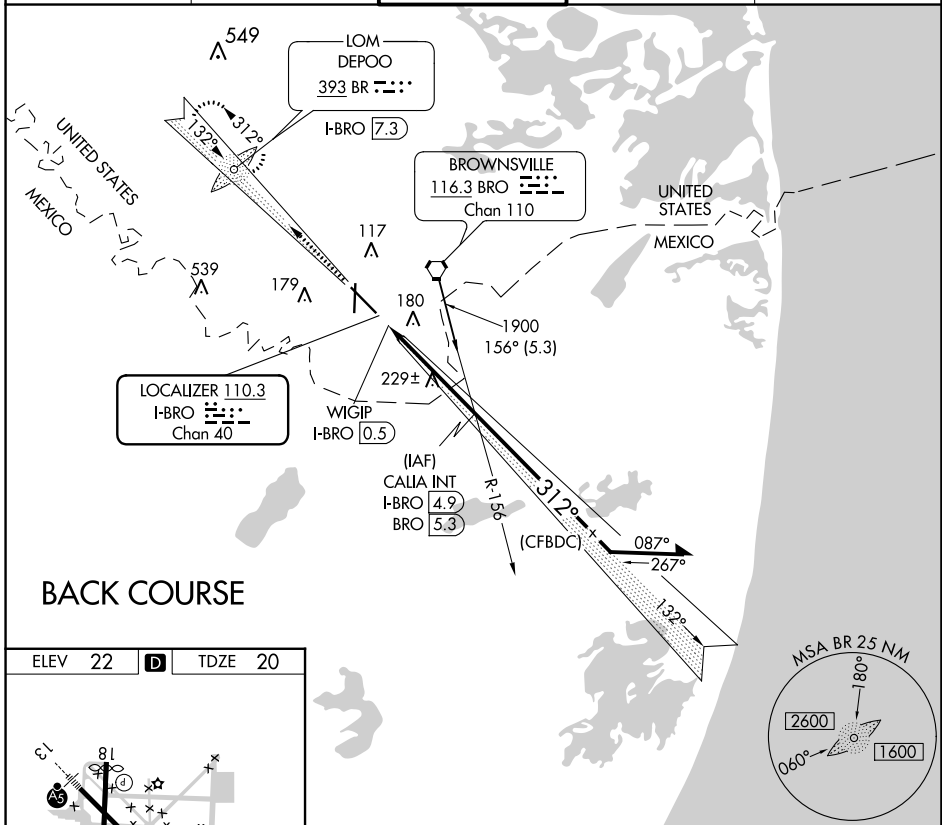
LOC BC RWY 31

BROWNSVILLE/SOUTH PADRE ISLAND INTL (BRO)

⚠ Helicopter visibility reduction below ¼ SM NA. When local altimeter setting not received, use Port Isabel altimeter setting and increase all MDA 40 ft; increase Circling Cat D visibility ¼ mile. Circling to Rwy 18 NA at night. ADF or DME required. VDP NA when using Port Isabel altimeter setting.

⚠ MISSED APPROACH: Climb to 1900 on I-BRO localizer NW course (312°) to DEPOO LOM/I-BRO 7.3 DME and hold.

ATIS 128.55	VALLEY APP CON 119.5 257.6	BROWNSVILLE TOWER* 118.9 (CTAF) 0 239.3	GND CON 121.9	UNICOM 122.95
-----------------------	--------------------------------------	---	-------------------------	-------------------------



1900	I-BRO NW crs 312°	BR	CALIA INT I-BRO 4.9	Disregard Glide Slope Indications. Remain within 10 NM
	WIGIP I-BRO 0.5	I-BRO 1.1		132°
				312°
				1900
				3.40° TCH 52
				VGSI and descent angles not coincident (VGSI Angle 3.00/TCH 68).

FAF to MAP 4.4 NM					
Knots	60	90	120	150	180
Min:Sec	4:24	2:56	2:12	1:46	1:28
CATEGORY	A	B	C	D	
S-31	480-1	460 (500-1)	480-1⅓	460 (500-1⅓)	
C CIRCLING	480-1	540-1	540-1½	680-2	
	458 (500-1)	518 (600-1)	518 (600-1½)	658 (700-2)	