

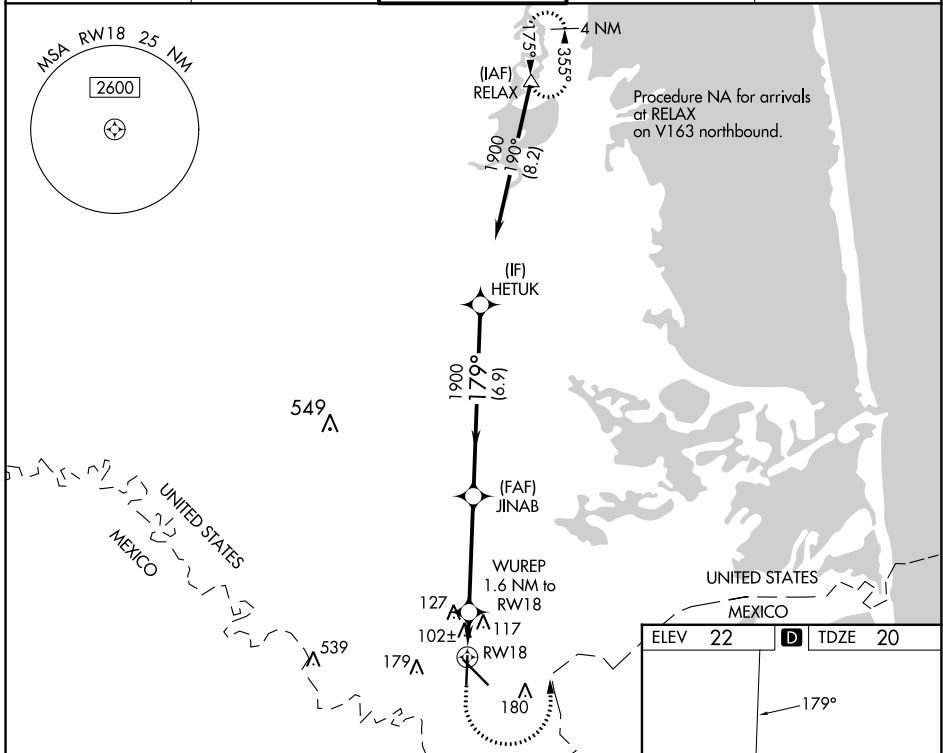
WAAS CH 93739 W18A	APP CRS 179°	Rwy ldg 5810 TDZE 20 Apt Elev 22
--	------------------------	---

RNAV (GPS) RWY 18

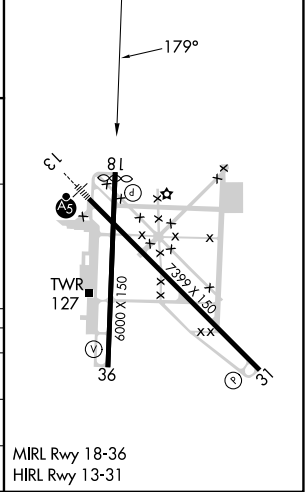
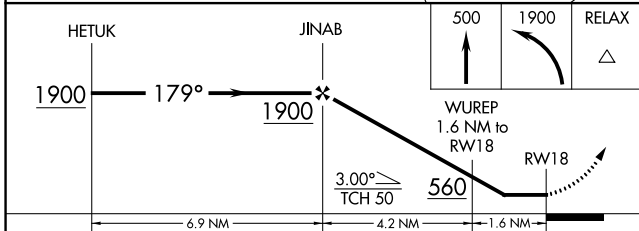
BROWNSVILLE/SOUTH PADRE ISLAND INTL (BRO)

RNP APCH. RADAR required.	MISSED APPROACH: Climb to 500 then climbing left turn to 1900 direct RELAX and hold.
<p>▼ Rwy 18 helicopter visibility reduction below 3/4 SM NA. When local altimeter not received, use Port Isabel altimeter setting and increase all MDA 40 feet; increase LNAV Cats C and D visibility 1/8 mile and Circling Cat D 1/4 mile.</p>	

ATIS 128.55	VALLEY APP CON 119.5 257.6	BROWNSVILLE TOWER ★ 118.9 (CTAF) 239.3	GND CON 121.9	UNICOM 122.95
-----------------------	--------------------------------------	--	-------------------------	-------------------------



ELEV 22	D	TDZE 20
---------	----------	---------



CATEGORY	A	B	C	D
LP MDA		360-1	340 (400-1)	
LNAV MDA		380-1	360 (400-1)	
C CIRCLING	440-1 418 (500-1)	540-1 518 (600-1)	540-1½ 518 (600-1½)	680-2 658 (700-2)

SC-3, 26 DEC 2024 to 23 JAN 2025

SC-3, 26 DEC 2024 to 23 JAN 2025