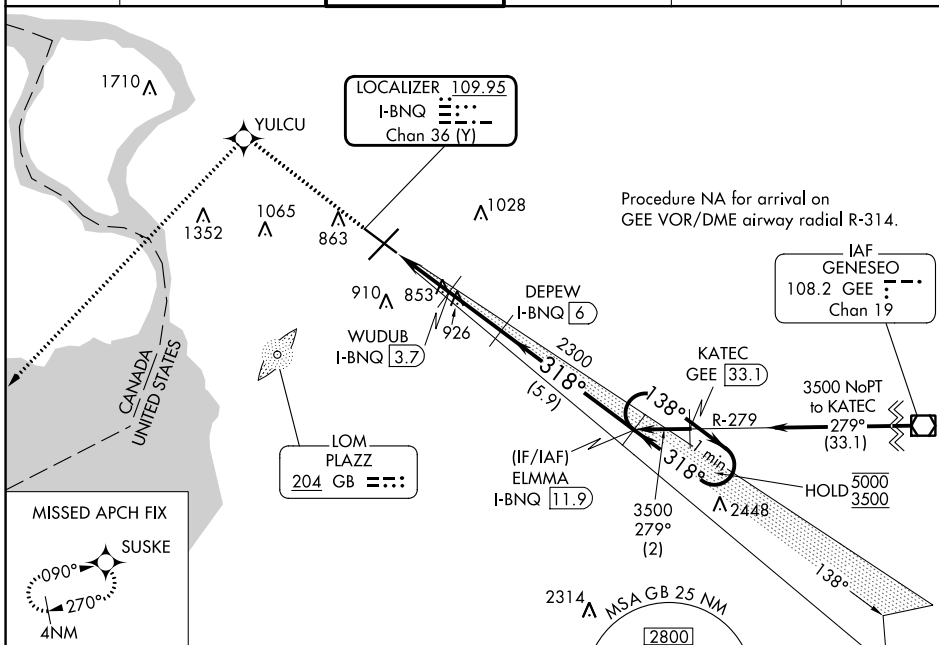


LOC/DME I-BNQ 109.95 Chan 36 (Y)	APP CRS 318°	Rwy Idg TDZE Apt Elev 6121 713 727
--	------------------------	--

ILS or LOC RWY 32

BUFFALO NIAGARA INTL (BUF)

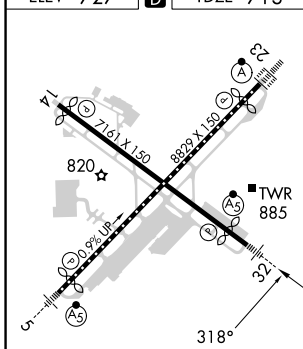
DME required. RNP APCH-GPS.		MALSR 	MISSED APPROACH: Climb to 3000 direct YULCU and on track 235° to SUSKE and hold.		
D-ATIS 135.35	BUFFALO APP CON 126.15 263.125	BUFFALO TOWER 120.5 257.8	GND CON 133.2 257.8	CLNC DEL 124.7 257.8	CPDLC



NE-2, 26 DEC 2024 to 23 JAN 2025

NE-2, 26 DEC 2024 to 23 JAN 2025

ELEV 727	D	TDZE 713
----------	----------	----------



3000	YULCU	tr 235°	SUSKE	DEPEW I-BNQ 6	ELMMA I-BNQ 11.9	One Minute Holding Pattern	
				2300	1540	5000/3500	
				1.2	2.3	3.7	
				1.1 NM	1.4 NM	2.3 NM	5.9 NM
CATEGORY	A		B		C		D
S-ILS 32	913-1/2		200 (200-1/2)				
S-LOC 32	1120-1/2 407 (400-1/2)		1120-3/4 407 (400-3/4)				
C CIRCLING	1200-1 473 (500-1)		1220-1 1/2 493 (500-1 1/2)		1340-2 613 (700-2)		