

# JANNY FIVE ARRIVAL (RNAV)

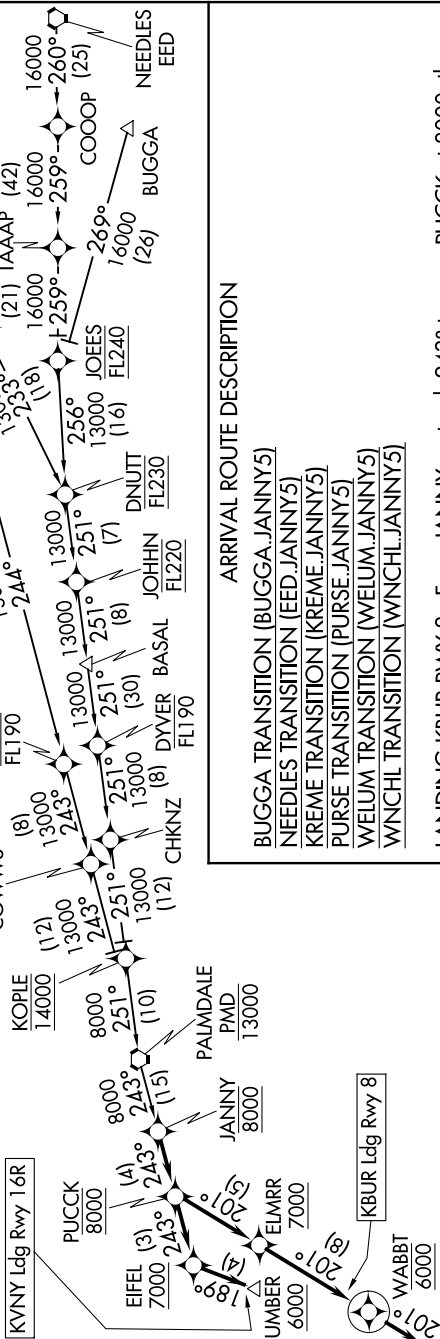
AL-67 (FAA)

BURBANK, CALIFORNIA

SW-3, 26 DEC 2024 to 23 JAN 2025

SOCAL APP CON  
120.4 360.6  
BUR D-ATIS  
134.5  
VNY ATIS  
127.55  
BURBANK TOWER  
118.7 254.3  
VAN NUYS TOWER\*  
119.3 239.0

NOTE: RADAR required.  
NOTE: RNAV 1.  
NOTE: DME/DME/IRU or GPS required.  
NOTE: WNCNL transition ATC assigned only.  
NOTE: KREME transition restricted to KLAS departures only.  
NOTE: Landing BUR expect Rwy 8 unless otherwise assigned by ATC.  
NOTE: Landing VNY expect Rwy 16R unless otherwise assigned by ATC.



### ARRIVAL ROUTE DESCRIPTION

- BUGGA TRANSITION (BUGGA.JANNY5)
- NEEDLES TRANSITION (EED.JANNY5)
- KREME TRANSITION (KREME.JANNY5)
- PURSE TRANSITION (PURSE.JANNY5)
- WELUM TRANSITION (WELUM.JANNY5)
- WNCNL TRANSITION (WNCNL.JANNY5)

**LANDING KBUR RWY 8:** From JANNY on track 243° to cross PUCCK at 8000, then on track 201° to cross ELMRR at or above 7000, then on track 201° to cross WABBT at 6000, then on track 201°. Expect RNAV (RNP) Y RWY 8 or RADAR vectors to final approach course.

**LANDING KVNY:** From JANNY on track 243° to cross PUCCK at 8000, then on track 243° to cross EIFEL at or above 7000, then on track 189° to cross UMBER at or above 6000. Expect ILS Y RWY 16R or ILS Z RWY 16R.



NOTE: Chart not to scale.

# JANNY FIVE ARRIVAL (RNAV)

BURBANK, CALIFORNIA

SW-3, 26 DEC 2024 to 23 JAN 2025