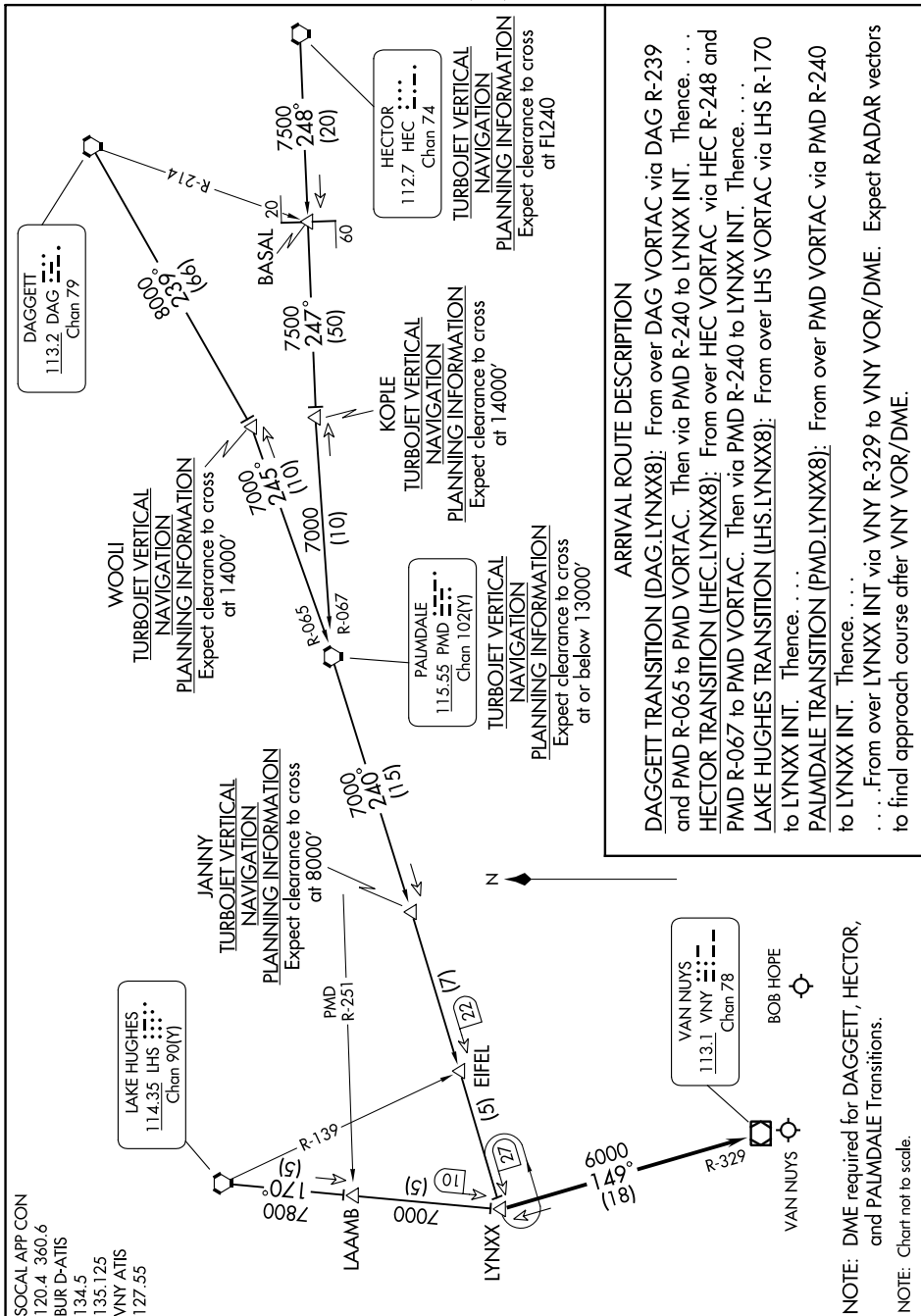


# LYNXX EIGHT ARRIVAL

AL-67 (FAA)

BURBANK, CALIFORNIA

SW-3, 26 DEC 2024 to 23 JAN 2025



SOCAL APP CON  
120.4 360.6  
BUR D-ATIS  
134.5  
135.125  
VNY ATIS  
127.55

LAKE HUGHES  
114.35 LHS  
Chan 90(Y)

DAGGETT  
113.2 DAG  
Chan 79

VAN NUYS  
113.1 VNY  
Chan 78

### ARRIVAL ROUTE DESCRIPTION

**DAGGETT TRANSITION (DAG.LYNXX8):** From over DAG VORTAC via DAG R-239 and PMD R-065 to PMD VORTAC. Then via PMD R-240 to LYNXX INT. Thence, . . .

**HECTOR TRANSITION (HEC.LYNXX8):** From over HEC VORTAC via HEC R-248 and PMD R-067 to PMD VORTAC. Then via PMD R-240 to LYNXX INT. Thence, . . .

**LAKE HUGHES TRANSITION (LHS.LYNXX8):** From over LHS VORTAC via LHS R-170 to LYNXX INT. Thence, . . .

**PALMDALE TRANSITION (PMD.LYNXX8):** From over PMD VORTAC via PMD R-240 to LYNXX INT. Thence, . . .

**VAN NUYS TRANSITION (VNY.VOR/DME):** From over VNY VOR/DME. Expect RADAR vectors to final approach course after VNY VOR/DME.

**NOTE:** DME required for DAGGETT, HECTOR, and PALMDALE Transitions.

**NOTE:** Chart not to scale.

SW-3, 26 DEC 2024 to 23 JAN 2025

# LYNXX EIGHT ARRIVAL

BURBANK, CALIFORNIA