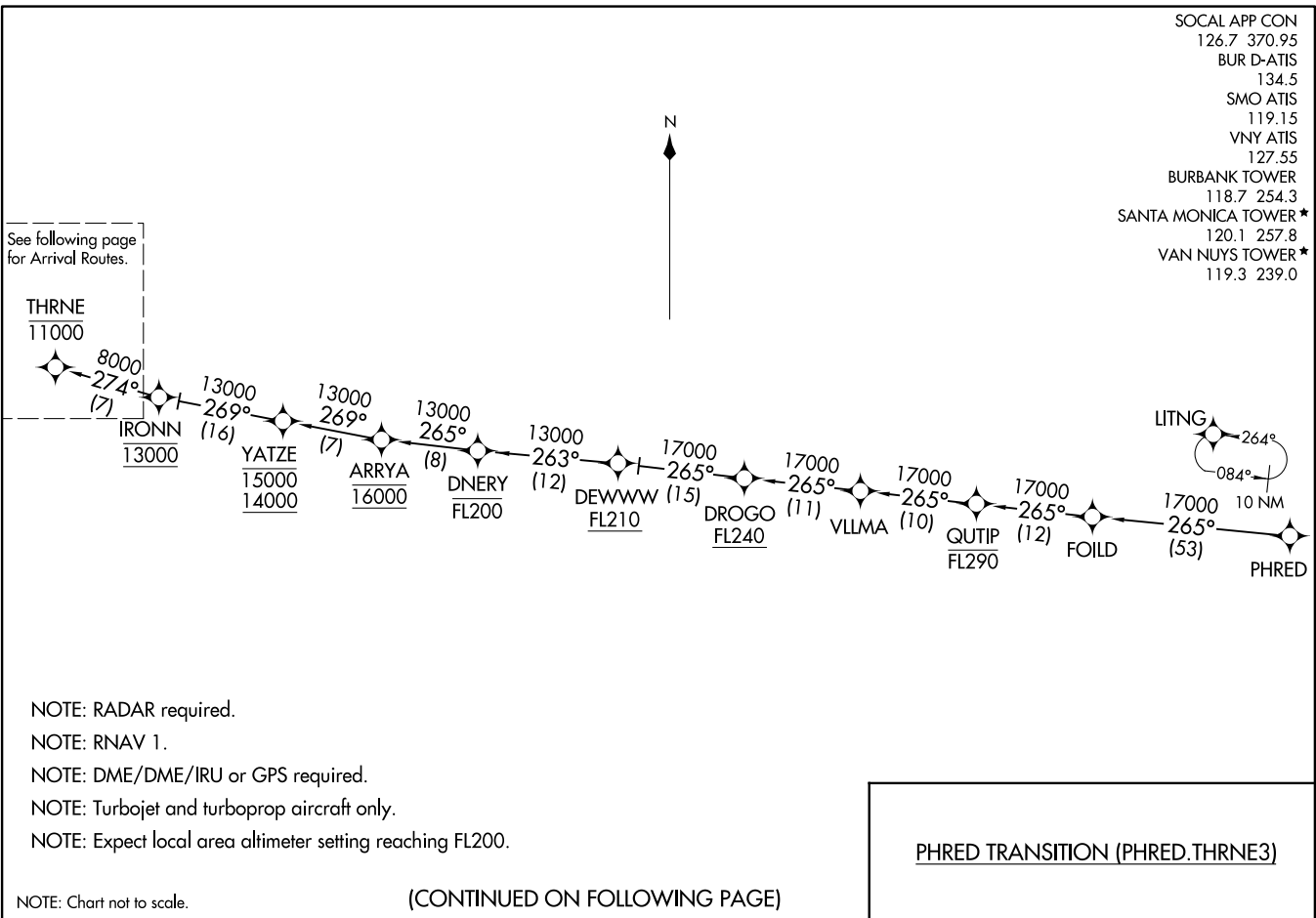


(THRNE:THRNE3) 29MAR18

THRNE THREE ARRIVAL (RNAV) Transition Route

BURBANK, CALIFORNIA



See following page for Arrival Routes.

- NOTE: RADAR required.
- NOTE: RNAV 1.
- NOTE: DME/DME/IRU or GPS required.
- NOTE: Turbojet and turboprop aircraft only.
- NOTE: Expect local area altimeter setting reaching FL200.

NOTE: Chart not to scale.

(CONTINUED ON FOLLOWING PAGE)

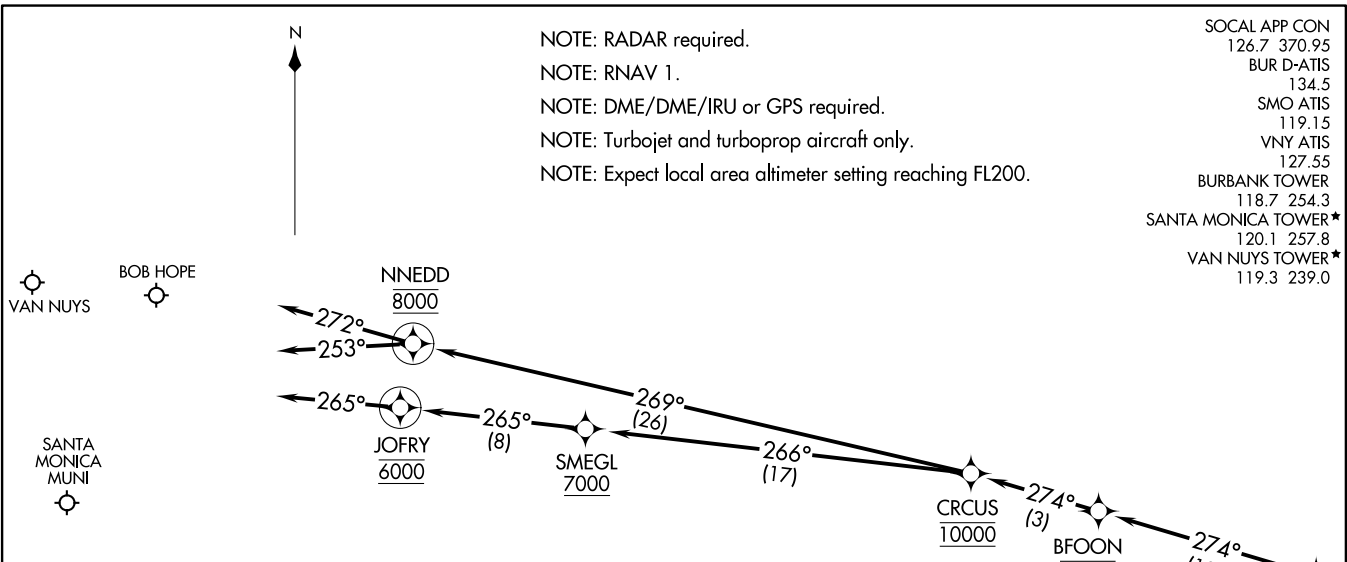
PHRED TRANSITION (PHRED.THRNE3)

- SOCAL APP CON 126.7 370.95
- BUR D-ATIS 134.5
- SMO ATIS 119.15
- VNY ATIS 127.55
- BURBANK TOWER 118.7 254.3
- SANTA MONICA TOWER\* 120.1 257.8
- VAN NUYS TOWER\* 119.3 239.0

(THRNE:THRNE3) 21168  
THRNE THREE ARRIVAL (RNAV) Transition Route  
Alt:67 (FAA) BURBANK, CALIFORNIA

THRNE THREE ARRIVAL (RNAV) Arrival Routes  
(THRNE:THRNE3) 29MAR18

BURBANK, CALIFORNIA



NOTE: RADAR required.  
 NOTE: RNAV 1.  
 NOTE: DME/DME/IRU or GPS required.  
 NOTE: Turbojet and turboprop aircraft only.  
 NOTE: Expect local area altimeter setting reaching FL200.

SOCAL APP CON 126.7 370.95  
 BUR D-ATIS 134.5  
 SMO ATIS 119.15  
 VNY ATIS 127.55  
 BURBANK TOWER 118.7 254.3  
 SANTA MONICA TOWER\* 120.1 257.8  
 VAN NUYS TOWER\* 119.3 239.0

ARRIVAL ROUTE DESCRIPTION

LANDING KBUR: From THRNE on track 274° to cross BFOON at 10000, then on track 274° to cross CRCUS at 10000, then on track 269° to cross NNEDD at 8000, then on track 253°. Expect RADAR vectors to final approach course.

LANDING KSMO: From THRNE on track 274° to cross BFOON at 10000, then on track 274° to cross CRCUS at 10000, then on track 266° to cross SMEGL at or above 7000, then on track 265° to cross JOFRY at 6000, then on track 265°. Expect RADAR vectors to final approach course.

LANDING KVNY: From THRNE on track 274° to cross BFOON at 10000, then on track 274° to cross CRCUS at 10000, then on track 269° to cross NNEDD at 8000, then on track 272°. Expect RADAR vectors to final approach course.

NOTE: Chart not to scale.

(THRNE:THRNE3) 21168  
 THRNE THREE ARRIVAL (RNAV) Arrival Routes  
 A1-67 (FAA) BURBANK, CALIFORNIA