


VOR/DME VNY	APP CRS	Rwy Idg	5801
113.1	089°	TDZE	727
Chan 78		Apt Elev	778

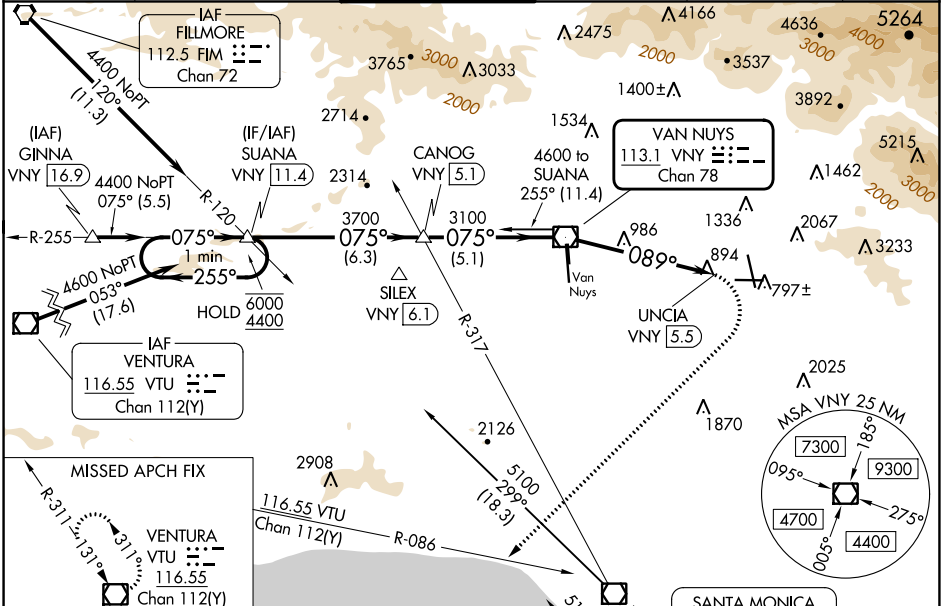
VOR RWY 8

BOB HOPE (BUR)

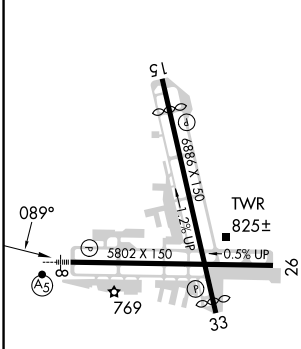
⚠ Straight-in Rwy 8 at night, Circling to Rwy 33 at night, operational VGSI required, remain on or above VGSI glidepath until threshold. Circling Rwy 26 NA at night and Circling Rwy 33 NA at night for Cat D. Circling NA for Cats A/B/C northeast of Rwy 15 and 26. Circling NA for Cat D east of Rwy 15-33. Inop table does not apply. Rwy 8 helicopter visibility reduction below RVR 5000 NA.

MALSRS  MISSED APPROACH: Climbing right turn to 4600 on heading 210° and VTU VOR/DME R-086 to VTU VOR/DME and hold.

D-ATIS	SOCAL APP CON	BURBANK TOWER	GND CON	CLNC DEL	CPDLC
134.5	120.4 360.6 (NORTH) 134.2 338.2 (WEST)	118.7 254.3	123.9 348.6	118.0 348.6	



ELEV 778	D	TDZE 727
----------	----------	----------

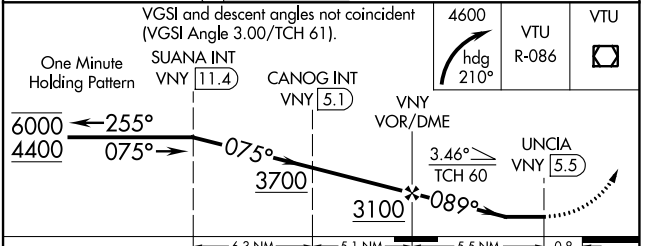
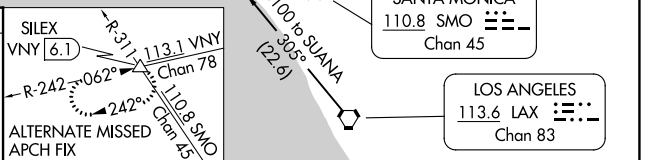


MIRL Rwy 15-33
HIRL Rwy 8-26
REIL Rws 15, 26 and 33

FAF to MAP 5.5 NM

Knots	60	90	120	150	180
Min:Sec	5:30	3:40	2:45	2:12	1:50

CIRCLING



CATEGORY	A	B	C	D
S-8	1600/55 873 (900-1)	1600-1¼ 873 (900-1¼)	1600-2½ 873 (900-2½)	873 (900-2½)
<input checked="" type="checkbox"/> CIRCLING	1600-1¼ 822 (900-1¼)	1640-1¼ 862 (900-1¼)	2240-3 1462 (1500-3)	2320-3 1542 (1600-3)

SW-3, 26 DEC 2024 to 23 JAN 2025

SW-3, 26 DEC 2024 to 23 JAN 2025