

VAN NUYS THREE DEPARTURE  
(VNY3.VNY) 26MAY16

VAN NUYS THREE DEPARTURE  
(VNY3.VNY) 23334

AL-67 (FAAN)

BOB HOPE (BTR)  
BURBANK, CALIFORNIA

**TOP ALTITUDE:  
ASSIGNED BY ATC**

SOCAL DEP CON  
124.6 298.85  
CLNC DEL  
118.0 348.6  
CPDLC

EDWARDS  
116.4 EDW  
Chan 111

COREZ  
4000  
266°  
(25)

AVENAL  
117.1 AVE  
Chan 118

GORMAN  
116.1 GMN  
Chan 108

LAKE HUGHES  
114.35 LHS  
Chan 90(Y)

PALMDALE  
115.55 PMD  
Chan 102(Y)

CASTA  
8300

ETHER  
9000  
067°  
(15)

DAGGETT  
113.2 DAG  
Chan 79

FILLMORE  
112.5 FIM  
Chan 72

VICTORVILLE  
109.05 VCV  
Chan 27(Y)

SLAPP  
7000  
038°  
(8)

BOGET  
7000  
038°  
(12)

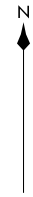
LANGE  
7000  
046°  
(9)

VAN NUYS  
113.1 VNY  
Chan 78

SUANA  
3700

LOS ANGELES  
113.6 LAX  
Chan 83

VENTURA  
116.55 VTU  
Chan 112(Y)



NOTE: RADAR required

**TAKEOFF MINIMUMS**

- Rwy 8: Standard with minimum climb of 410' per NM to 2500.
- Rwy 15: Standard with minimum climb of 335' per NM to 2300.
- Rwy 26: Standard with minimum climb of 305' per NM to 5000.
- Rwy 33: Standard with minimum climb of 550' per NM to 5000, or 600-2¼ with minimum climb of 300' per NM to 5000.

NOTE: Chart not to scale.

(CONTINUED ON FOLLOWING PAGE)



DEPARTURE ROUTE DESCRIPTION

TAKEOFF RUNWAY 8: Climbing right turn heading 213° . . . .

TAKEOFF RUNWAY 15: Climbing right turn heading 213° . . . .

TAKEOFF RUNWAY 26: Climbing right turn heading 293° . . . .

TAKEOFF RUNWAY 33: Climbing left turn heading 273° . . . .

. . . .expect RADAR vector to VNY VOR/DME. Thence via (transition) or (assigned route).

AVENAL TRANSITION (VNY3.AVE): From over VNY VOR/DME on VNY R-255 and LAX R-323 to TWINE, then on LAX R-323 and GMN R-142 to GMN VORTAC, then on GMN R-310 and AVE R-086 to AVE VOR/DME.

DAGGETT TRANSITION (VNY3.DAG): From over VNY VOR/DME on VNY R-255 and LAX R-323 to TWINE, then on VTU R-046 and PMD R-218 to PMD VORTAC, then on PMD R-067 and DAG R-238 to DAG VORTAC.

FILLMORE TRANSITION (VNY3.FIM): From over VNY VOR/DME on VNY R-255 and FIM R-120 to FIM VORTAC.

GORMAN TRANSITION (VNY3.GMN): From over VNY VOR/DME on VNY R-255 and LAX R-323 to TWINE, then on LAX R-323 and GMN R-142 to GMN VORTAC.

PALMDALE TRANSITION (VNY3.PMD): From over VNY VOR/DME on VNY R-255 and LAX R-323 to TWINE, then on VTU R-046 and PMD R-218 to PMD VORTAC.

TWINE TRANSITION (VNY3.TWINE): From over VNY VOR/DME on VNY R-255 and LAX R-323 to TWINE.

SW-3, 26 DEC 2024 to 23 JAN 2025

SW-3, 26 DEC 2024 to 23 JAN 2025