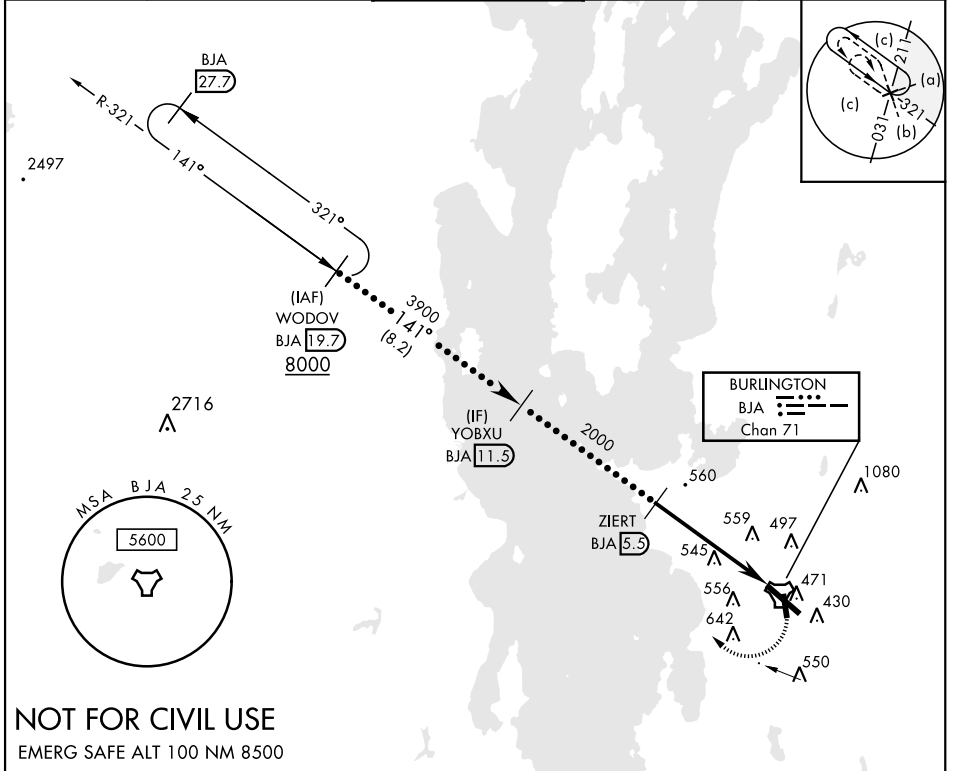


# HI-TACAN RWY 15

TACAN BJA Chan <b>71</b>	APCH CRS <b>141°</b>	Rwy ldg TDZE <b>7820</b> 326 Arprt Elev <b>335</b>	AL-70 [USAF]	PATRICK LEAHY BURLINGTON INTL (KBTV)
<p><b>▼</b> * When ALS inop, increase CAT CDE vis to 1 3/8 mile.</p> <p><b>▲</b></p>			MALSRL <b>A5</b>	MISSED APPROACH: Climbing right turn to 8000 on BJA R-321 to WODOV / BJA 19.7 DME and hold, continue climb-in-hold to 8000.

ATIS <b>123.8 269.9</b>	APP CON <b>121.1 278.8</b>	TOWER ★ <b>118.3 (CTAF) 0257.8</b>	GND CON <b>126.3 348.6</b>	CLNC DEL <b>119.15</b>
----------------------------	-------------------------------	---------------------------------------	-------------------------------	---------------------------



**NOT FOR CIVIL USE**  
EMERG SAFE ALT 100 NM 8500

WODOV BJA 19.7	8000	141°	YOBXU BJA 11.5	3900	ZIERT BJA 5.5	2000	TACAN	ZIBVO BJA 0.5	ZIERT BJA 5.5	ELEV 335	D	TDZE 326				
										<table border="1"> <tr> <td>Rwy 1 ldg 3386'</td> <td>Rwy 19 ldg 3386'</td> <td>Rwy 15 ldg 7820'</td> <td>Rwy 33 ldg 7819'</td> </tr> </table>			Rwy 1 ldg 3386'	Rwy 19 ldg 3386'	Rwy 15 ldg 7820'	Rwy 33 ldg 7819'
Rwy 1 ldg 3386'	Rwy 19 ldg 3386'	Rwy 15 ldg 7820'	Rwy 33 ldg 7819'													
CATEGORY	C		D		E											
S-15*	820/50		494		(500-1)											
CIRCLING	1220-2 3/4 885 (900-2 3/4)		1380-3 1045 (1100-3)		1500-3 1165 (1200-3)			MIRL Rwy 1-19 HIRL Rwy 15-33								

# HI-TACAN RWY 15

NE-1, 26 DEC 2024 to 23 JAN 2025

NE-1, 26 DEC 2024 to 23 JAN 2025