

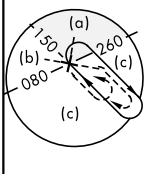
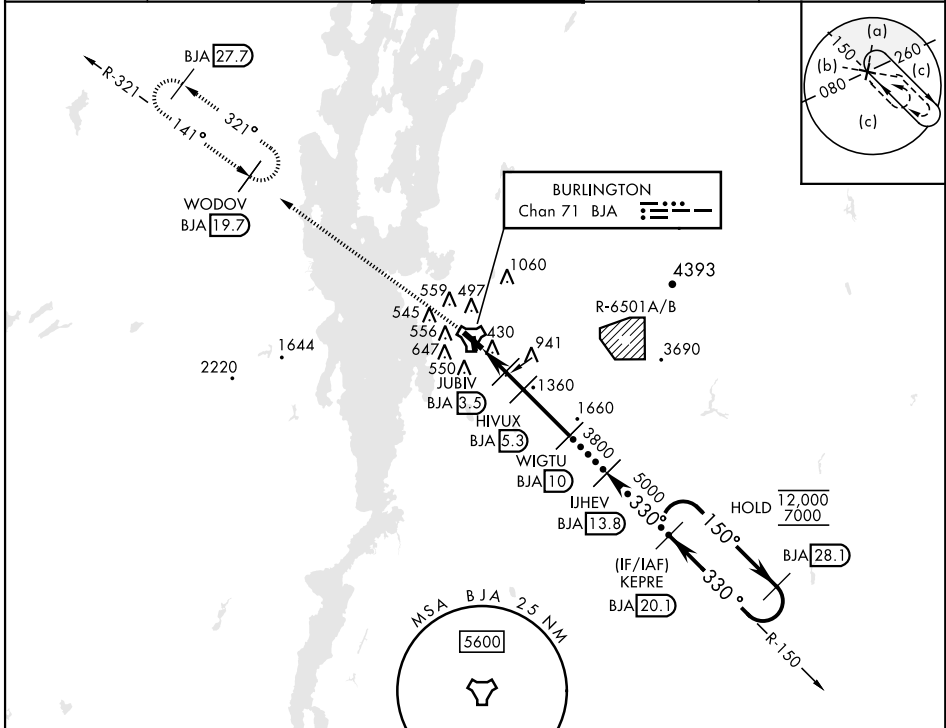
# HI-TACAN RWY 33

TACAN BJA Chan 71	APCH CRS 330°	Rwy ldg 7819 TDZE 334 Arprt Elev 335
----------------------	------------------	---

AL-70 [USAF] PATRICK LEAHY BURLINGTON INTL (KBTV)

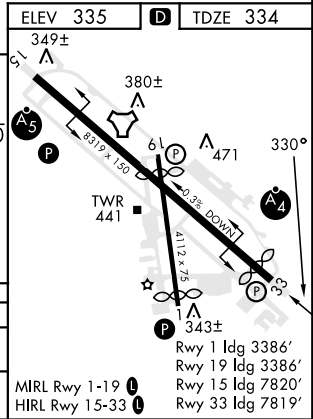
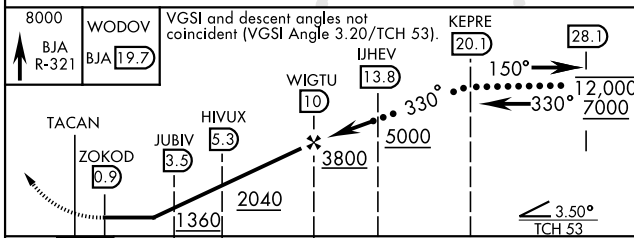
		MISSED APPROACH: Climb to 8000 on BJA TACAN R-321 to WODOV/BJA 19.7 DME and hold, continue climb-in-hold to 8000.	
--	--	---	--

ATIS <b>123.8 269.9</b>	APP CON <b>121.1 278.8</b>	TOWER ★ <b>118.3 (CTAF) 0257.8</b>	GND CON <b>126.3 348.6</b>	CLNC DEL <b>119.15</b>
----------------------------	-------------------------------	---------------------------------------	-------------------------------	---------------------------



## NOT FOR CIVIL USE

EMERG SAFE ALT 100 NM 8500



CATEGORY	C	D	E
S-33	1200-2½	866 (900-2½)	
CIRCLING	1220-2¾ 885 (900-2¾)	1380-3 1045 (1100-3)	1500-3 1165 (1200-3)

# HI-TACAN RWY 33

NE-1, 26 DEC 2024 to 23 JAN 2025

NE-1, 26 DEC 2024 to 23 JAN 2025