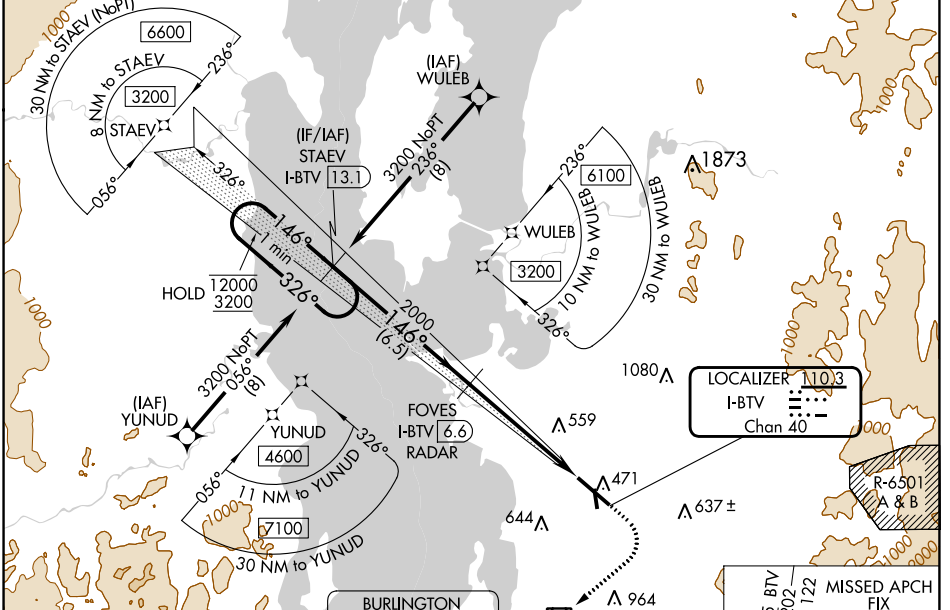


LOC/DME I-BTV 110.3 Chan 40	APP CRS 146°	Rwy ldg TDZE 7820 326	Apt Elev 335
-------------------------------------------------	------------------------	-------------------------------------------	------------------------

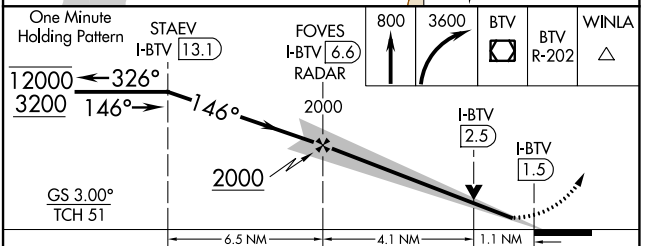
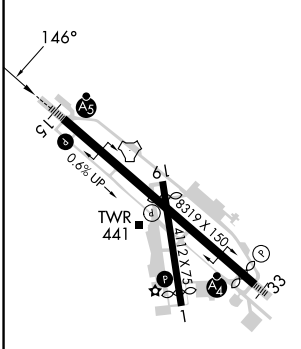
ILS or LOC RWY 15

PATRICK LEAHY BURLINGTON INTL (BTV)

RNP APCH - GPS. Aircraft not GPS equipped - RADAR required. Cat E aircraft - RADAR required.		MALSR MISSED APPROACH: Climb to 800 then climbing right turn to 3600 direct BTV VOR/DME and on BTV VOR/DME R-202 to WINLA INT/BTV 6.4 DME and hold, continue climb-in-hold to 3600.		
<p>⚠ Rwy 15 helicopter visibility reduction below RVR 4000 NA. For inop ALS, increase S-LOC 15 all Cats visibility to RVR 5500.</p> <p>❄ -10°C Inop table does not apply to S-ILS 15.</p>				
ATIS 123.8 269.9	BURLINGTON APP CON * 121.1 278.8	BURLINGTON TOWER * 118.3 (CTAF) 257.8	GND CON 126.3 348.6	CLNC DEL 119.15
		UNICOM 122.95		



ELEV 335	D	TDZE 326
----------	----------	----------



	A	B	C	D	E
S-ILS 15	576/40 250 (300-¾)				
S-LOC 15	700/40 374 (400-¾)				
C CIRCLING	840-1 505 (600-1)	860-1 525 (600-1)	1220-2¾ 885 (900-2¾)	1380-3 1045 (1100-3)	1400-3 1065 (1100-3)

NE-1, 26 DEC 2024 to 23 JAN 2025

NE-1, 26 DEC 2024 to 23 JAN 2025