

WAAS CH <b>78226</b> <b>W32A</b>	APP CRS <b>324°</b>	Rwy Idg TDZE Apt Elev	<b>5452</b> <b>3268</b> <b>3295</b>
----------------------------------------	------------------------	-----------------------------	-------------------------------------------

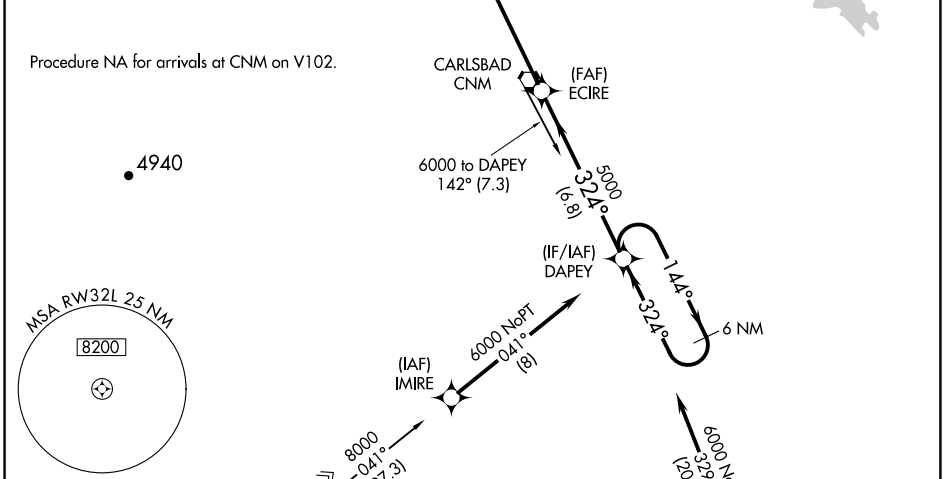
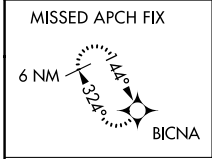
# RNAV (GPS) RWY 32L

CAVERN CITY AIR TRML (CNM)

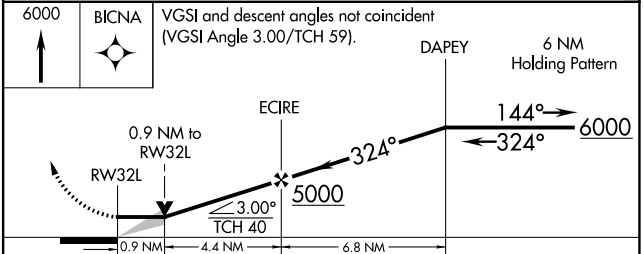
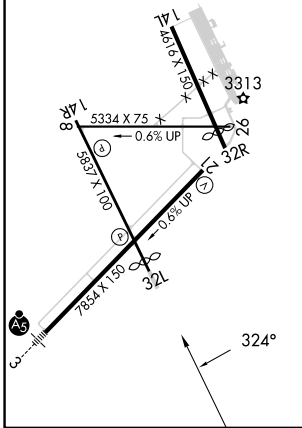
**⚠** DME/DME RNP-0.3 NA. When local altimeter setting not received, use Artesia Muni altimeter setting and increase all MDA 120 ft. Increase LP Cats C/D visibility to 1½ mile, LNAV Cats C/D to 1¾ mile and Circling Cat C to 2¼ mile. VDP NA when using Artesia Muni altimeter setting.

**MISSED APPROACH:** Climb to 6000 direct BICNA and hold.

ASOS <b>118.375</b>	ALBUQUERQUE CENTER <b>135.875 292.15</b>	UNICOM <b>123.0 (CTAF) 0</b>
------------------------	---------------------------------------------	---------------------------------



ELEV 3295	<b>D</b>	TDZE 3268
MIRL Rwy's 3-21, 8-26 and 14R-32L		



CATEGORY	A	B	C	D
LP MDA	3720-1	452 (500-1)	3720-1¾	452 (500-1¾)
LNAV MDA	3740-1	472 (500-1)	3740-1¾	472 (500-1¾)
<b>C</b> CIRCLING	3740-1 445 (500-1)	3780-1 485 (500-1)	3960-1¾ 665 (700-1¾)	4260-3 965 (1000-3)

SW-1, 26 DEC 2024 to 23 JAN 2025

SW-1, 26 DEC 2024 to 23 JAN 2025