

LOC I-SYD 111.3	APP CRS 032°	Rwy ldg 10165
	TDZE 5328	
	Apt Elev 5344	

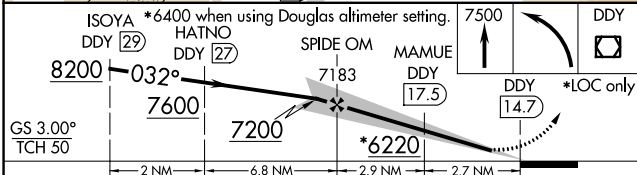
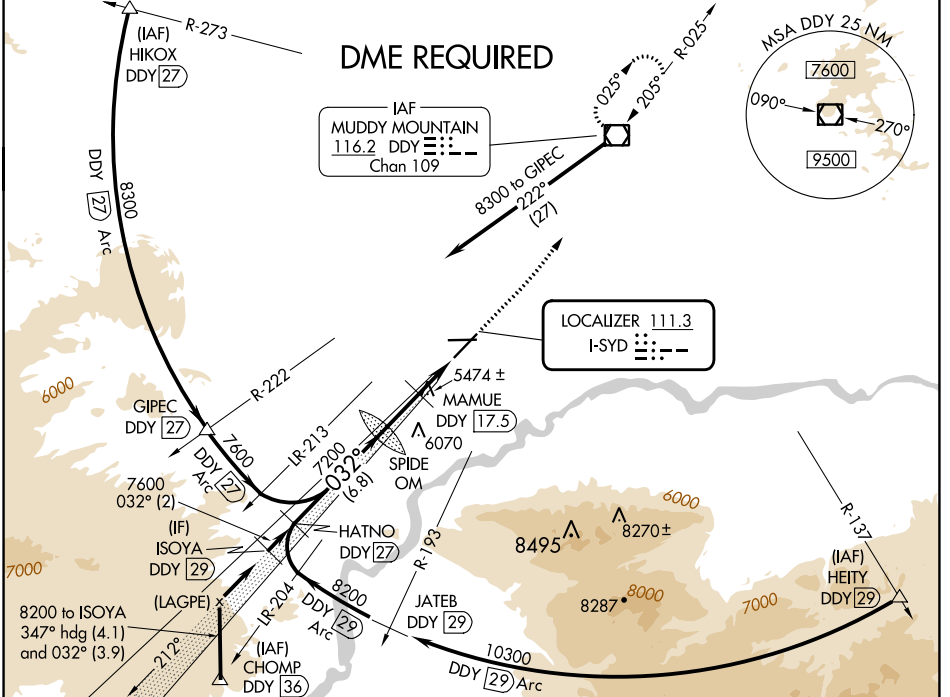
ILS or LOC RWY 3

CASPER/NATRONA COUNTY INTL (CPR)

▽ DME from DDY VOR/DME. Simultaneous reception of I-SYD and DDY DME required. When local altimeter setting not received, use Douglas altimeter setting and increase DA to 5697 feet and all MDA's 180 feet, increase S-ILS visibility all Cats ¼ SM and S-LOC visibility Cat B, C, D and Circling Cats B, C, D visibility ½ SM, increase MAMUE FIX MINIMUM Circling visibility Cat C ½ SM and Cat D ¼ SM. For inoperative MALSRS when using Douglas altimeter setting increase S-ILS visibility all Cats to ½ mile. MAMUE FIX MINIMUMS: For inoperative MALSRS, increase S-LOC visibility Cats C, and D to 1½ mile. #RVR 1800 authorized with use of FD or HUD to DA.

MALSRS MISSED APPROACH: Climb to 7500 then left turn direct DDY VOR/DME and hold.

ATIS 126.15	CASPER APP CON * 120.65 354.1	CASPER TOWER * 118.3 (CTAF) 257.8	GND CON 121.9	CLNC DEL 121.9 257.8	UNICOM 122.95
-----------------------	---	---	-------------------------	--------------------------------	-------------------------



ELEV 5344	DDY	TDZE 5328				
<table border="1"> <tr> <td>REIL Rwy 21</td> <td>1</td> </tr> <tr> <td>HIRL Rws 3-21 and 8-26</td> <td>1</td> </tr> </table>			REIL Rwy 21	1	HIRL Rws 3-21 and 8-26	1
REIL Rwy 21	1					
HIRL Rws 3-21 and 8-26	1					
FAF to MAP 5.6 NM						
Knots	60	90 120 150 180				
Min:Sec	5:36	3:44 2:48 2:14 1:52				

CATEGORY	A	B	C	D
S-ILS 3	# 5528/24 200 (200-½)			
S-LOC 3	6220/40	892 (900-¾)	6220-2	892 (900-2)
CIRCLING	6220-1¼	876 (900-1½)	6220-2½ 876 (900-2½)	6220-2¾ 876 (900-2¾)
MAMUE FIX MINIMUMS				
S-LOC 3	5740/24	412 (400-½)	5740/40	412 (400-¾)
CIRCLING	5740-1 396 (400-1)	5800-1 456 (500-1)	5860-1½ 516 (600-1½)	6200-2¾ 856 (900-2¾)

NW-1, 26 DEC 2024 to 23 JAN 2025

NW-1, 26 DEC 2024 to 23 JAN 2025