

WAAS CH 63012 W21A	APP CRS 212°	Rwy Idg TDZE Apt Elev	10165 5330 5344
--	------------------------	-----------------------------	--

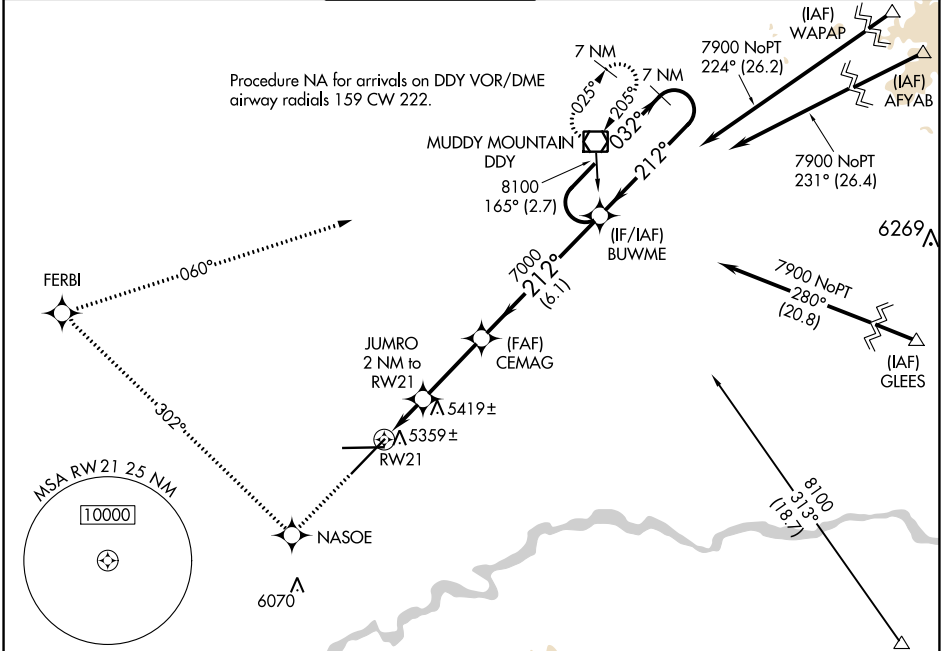
RNAV (GPS) RWY 21

CASPER/NATRONA COUNTY INTL (CPR)

⚠ For uncompensated Baro-VNAV systems, LNAV/VNAV NA below -25°C (-13°F) or above 38°C (100°F). DME/DME RNP-0.3 NA.

⚠ MISSED APPROACH: Climb to 8100 direct NASOE and right turn via track 302° to FERBI and via track 060° to DDY VOR/DME and hold.

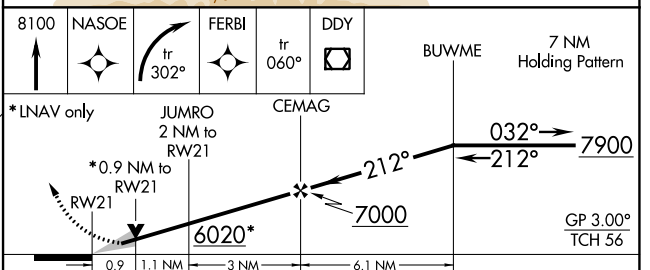
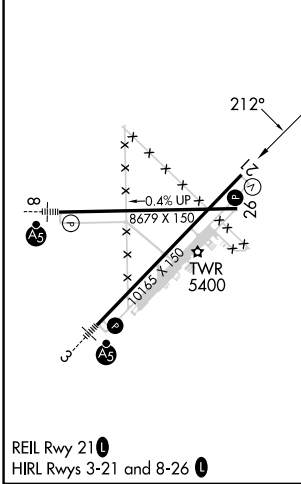
ATIS 126.15	CASPER APP CON * 120.65 354.1	CASPER TOWER * 118.3 (CTAF) 0 257.8	GND CON 121.9	CLNC DEL 121.9 257.8	UNICOM 122.95
-----------------------	---	---	-------------------------	--------------------------------	-------------------------



NW-1, 26 DEC 2024 to 23 JAN 2025

NW-1, 26 DEC 2024 to 23 JAN 2025

ELEV 5344	D	TDZE 5330
-----------	----------	-----------



CATEGORY	A	B	C	D
LPV DA		5580-3/4	250 (300-3/4)	
LNAV/VNAV DA		5629-1	299 (300-1)	
LNAV MDA	5680-1	350 (400-1)		5680-1 1/4 350 (400-1 1/4)
CIRCLING	5780-1 436 (500-1)	5800-1 456 (500-1)	5860-1 1/2 516 (600-1 1/2)	6200-2 3/4 856 (900-2 3/4)