

VOR/DME DDY <b>116.2</b> Chan <b>109</b>	APP CRS <b>203°</b>	Rwy Idg <b>10165</b> TDZE <b>5330</b> Apt Elev <b>5344</b>
--	------------------------	--

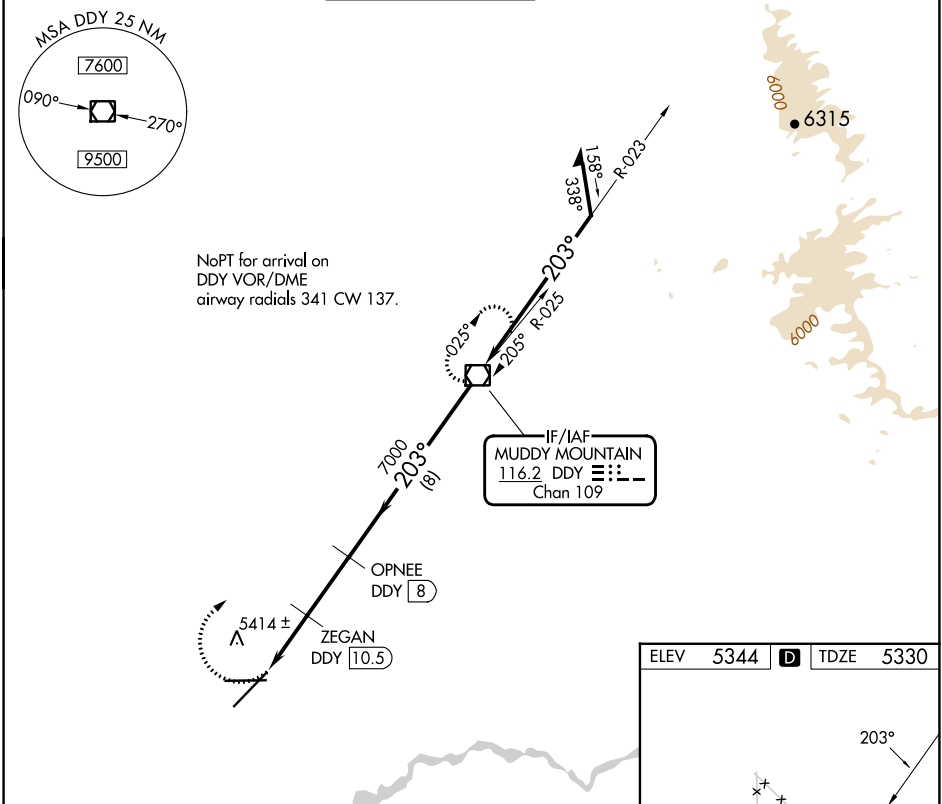
# VOR/DME RWY 21

CASPER/NATRONA COUNTY INTL (CPR)

**▼** VDP NA with Douglas altimeter setting. When local altimeter setting not received, use Douglas altimeter setting and increase all MDAs 180 feet, increase S-21 visibility Cats C/D ½ SM, Circling Cat C ½ SM and Cat D ¼ SM.

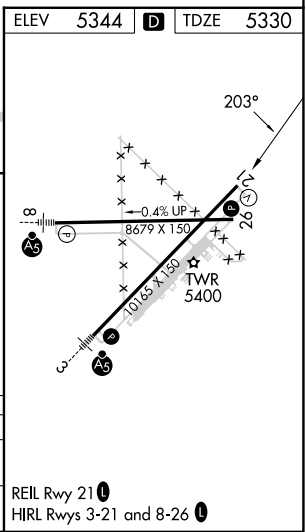
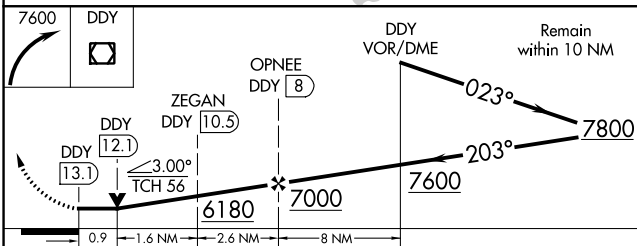
**MISSED APPROACH:** Climbing right turn to 7600 direct DDY VOR/DME and hold.

ATIS <b>126.15</b>	CASPER APP CON * <b>120.65 354.1</b>	CASPER TOWER * <b>118.3 (CTAF) 0 257.8</b>	GND CON <b>121.9</b>	CLNC DEL <b>121.9 257.8</b>	UNICOM <b>122.95</b>
-----------------------	---	---	-------------------------	--------------------------------	-------------------------



NW-1, 26 DEC 2024 to 23 JAN 2025

NW-1, 26 DEC 2024 to 23 JAN 2025



CATEGORY	A	B	C	D
S-21	5680-1 350 (400-1)			
CIRCLING	5740-1 396 (400-1)	5800-1 456 (500-1)	5860-1½ 516 (600-1½)	6200-2¾ 856 (900-2¾)

REIL Rwy 21  
HIRL Rwy 3-21 and 8-26