

# FTHLS SIX DEPARTURE (RNAV)

AL-74 (FAA)

PHOENIX-MESA GATEWAY (IWA)  
PHOENIX, ARIZONA

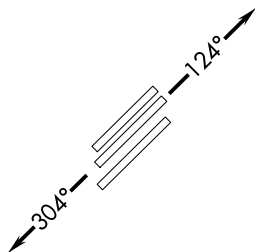
SW-4, 26 DEC 2024 to 23 JAN 2025

ATIS\*  
133.5 270.275  
CLNC DEL  
135.05  
GND CON  
128.25 275.8  
GATEWAY TOWER\*  
120.6 289.4  
PHOENIX DEP CON  
124.9 353.8

NOTE: RNAV 1.  
NOTE: Turbojets and turboprops only.  
NOTE: RADAR required.  
NOTE: GPS required.  
NOTE: ABQ transition ATC assigned only.  
NOTE: Aircraft filing over ACH, LBL, ONM, CNX, PNH, MMB, TCC, IRW and TXO file FTHLS DEPARTURE.  
NOTE: Aircraft filing over ABQ, CIM, FTI, and GCK file LALUZ DEPARTURE.  
NOTE: Aircraft filing over DEN, RSK, ALS, and points north of ALS file YOTES DEPARTURE.  
NOTE: Aircraft departing KGEU and KGYR ATC assigned only.

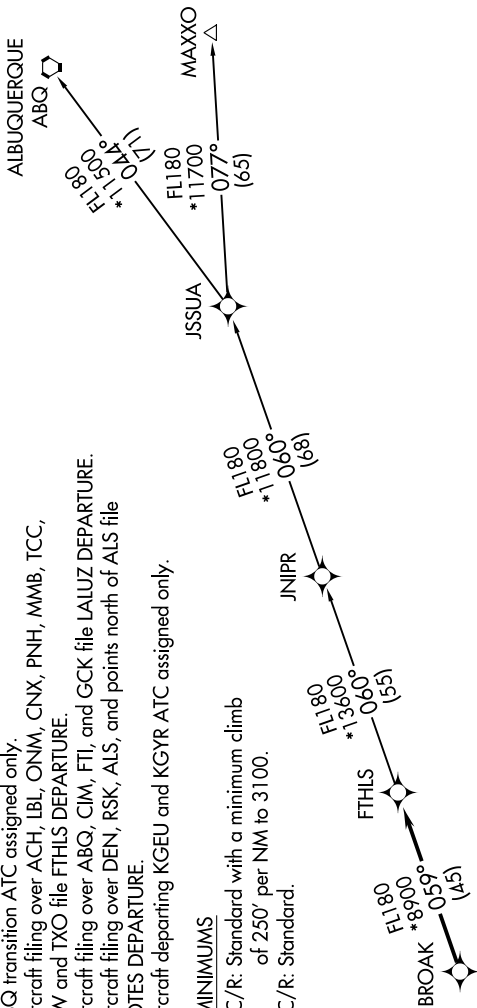
### TAKEOFF MINIMUMS

Rwys 12L/C/R: Standard with a minimum climb of 250' per NM to 3100.  
Rwys 30L/C/R: Standard.



NOTE: Chart not to scale.

### TOP ALTITUDE: ASSIGNED BY ATC



### DEPARTURE ROUTE DESCRIPTION

TAKEOFF RUNWAYS 12L/C/R: Climb heading 124° or as assigned by ATC. Thence. . . .  
TAKEOFF RUNWAYS 30L/C/R: Climb heading 304° or as assigned by ATC. Thence. . . .

. . . .expect RADAR vectors to BROAK, then on track 059° to FTHLS, then on (transition).  
Maintain ATC assigned altitude, expect filed altitude 3 minutes after departure.

ALBUQUERQUE TRANSITION (FTHLS6.ABQ)

JNIPR TRANSITION (FTHLS6.JNIPR)

MAXXO TRANSITION (FTHLS6.MAXXO)

# FTHLS SIX DEPARTURE (RNAV)

(FTHLS6.FTHLS) 24MAY18

PHOENIX, ARIZONA  
PHOENIX-MESA GATEWAY (IWA)

SW-4, 26 DEC 2024 to 23 JAN 2025