

HI-VOR Z or TACAN Z RWY 15

VORTAC CHS 113.5 Chan 82	APCH CRS 157°	Rwy Idg TDZE Arpt Elev 9001 43 46
--	-------------------------	---

[USAF]

CHARLESTON AFB/INTL (KCHS)

DME required

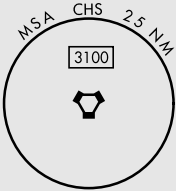
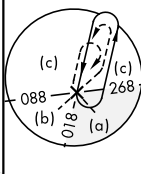
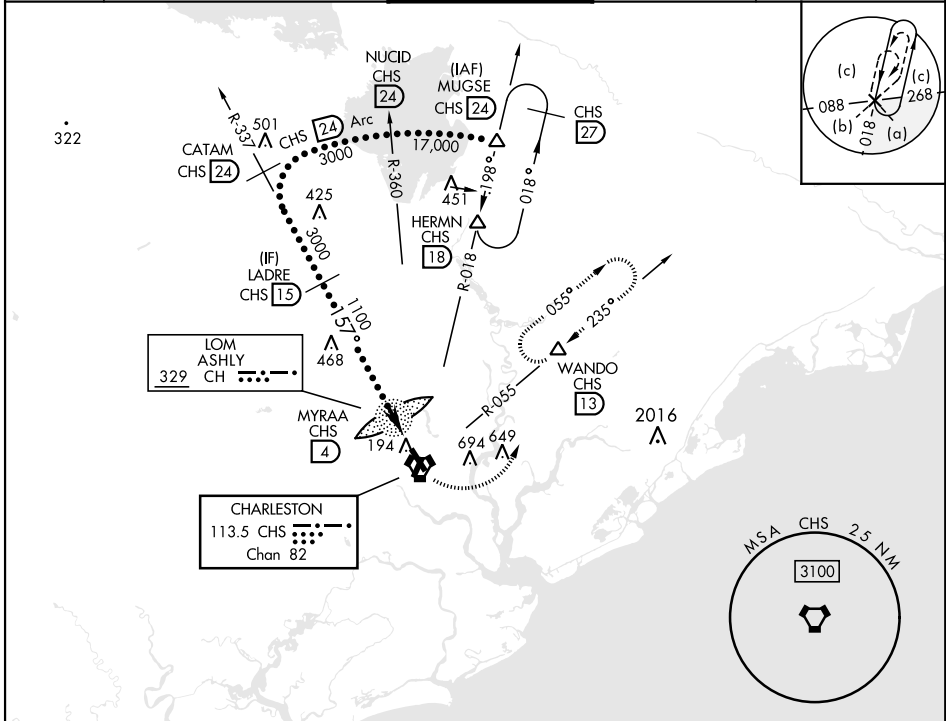
ALSF-2

MISSED APPROACH: Climb to 500 then climbing left turn to 3500 on CHS VORTAC R-055 to WANDO/CHS 13 DME and hold, continue climb-in-hold to 3500.

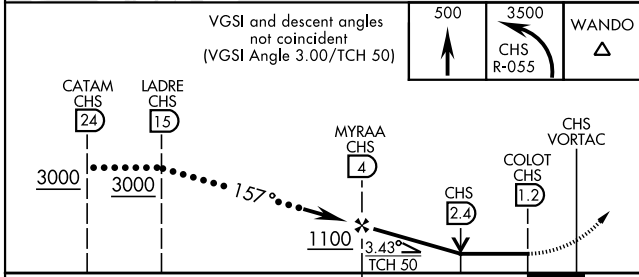
▼ * When ALS inop, increase CAT CDE RVR to 60, vis to 1 1/8 miles.



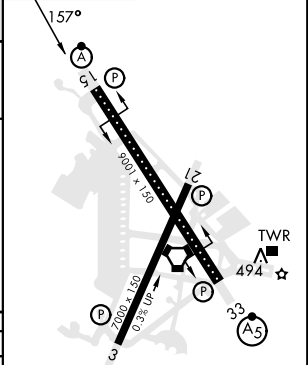
ATIS 124.75	APP CON 120.7 306.925 (151° - 330°) 121.275 379.925 (331° - 150°)	TOWER 126.0 239.0	GND CON 121.9 348.6	CLNC DEL 127.325 291.65
-----------------------	---	-----------------------------	-------------------------------	-----------------------------------



EMERG SAFE ALT 100 NM 3200



ELEV	46	TDZE	43
------	----	------	----



CATEGORY	C	D	E
S-15*	460/40	417	(500-3)
CIRCLING	540-1 1/2 494 (500-1 1/2)	740-2 1/4 694 (700-2 1/4)	740-2 1/2 694 (700-2 1/2)

HIRL all rwys
REIL Rwys 3 and 21
TDZL/CL Rwy 15

HI-VOR Z or TACAN Z RWY 15

SE-2, 26 DEC 2024 to 23 JAN 2025

SE-2, 26 DEC 2024 to 23 JAN 2025