

(MLTRE3.MLTRE) 23166

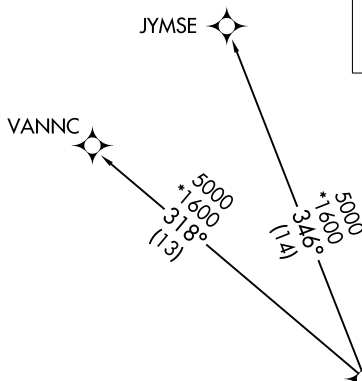
AL-76 (FAA)

CHARLESTON AFB/INTL (CHS)  
CHARLESTON, SOUTH CAROLINA

# MLTRE THREE DEPARTURE (RNAV)

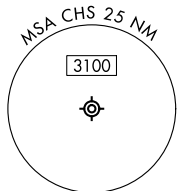
**TOP ALTITUDE:  
4000**

D-ATIS  
124.75  
CLNC DEL  
127.325 291.65  
CPDLC  
GND CON  
121.9 348.6  
CHARLESTON TOWER  
126.0 239.0  
CHARLESTON DEP CON  
121.275 379.925



NOTE: For non-GPS equipped aircraft, CHS and VAN DMEs must be operational for takeoff Rwy 21.

TAKEOFF MINIMUMS:  
Rwys 3, 15, 21, 33: Standard.



RNAV 1 - DME/DME/IRU or GPS.  
RADAR required for non-GPS equipped aircraft.

## DEPARTURE ROUTE DESCRIPTION

TAKEOFF RUNWAY 3: Climb on heading 031° to 546, then left turn direct to cross MLTRE at or above 4000, thence. . .

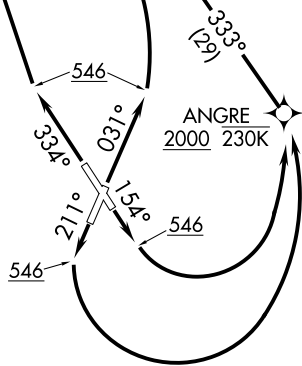
TAKEOFF RUNWAY 15: Climb on heading 154° to 546, then left turn direct to cross ANGRE at or above 2000 at or below 230K, then on track 333° to cross MLTRE at or above 4000, thence. . .

TAKEOFF RUNWAY 21: Climb on heading 211° to 546, then left turn direct to cross ANGRE at or above 2000 at or below 230K, then on track 333° to cross MLTRE at or above 4000, thence. . .

TAKEOFF RUNWAY 33: Climb on heading 334° to 546, then direct to cross MLTRE at or above 4000, thence. . .

. . . on assigned transition. Maintain 4000. Expect clearance to filed altitude 10 minutes after departure.

JYMSE TRANSITION (MLTRE3.JYMSE):  
VANNC TRANSITION (MLTRE3.VANNC):



NOTE: Chart not to scale.

# MLTRE THREE DEPARTURE (RNAV)

(MLTRE3.MLTRE) 20APR23

CHARLESTON, SOUTH CAROLINA  
CHARLESTON AFB/INTL (CHS)

SE-2, 26 DEC 2024 to 23 JAN 2025

SE-2, 26 DEC 2024 to 23 JAN 2025