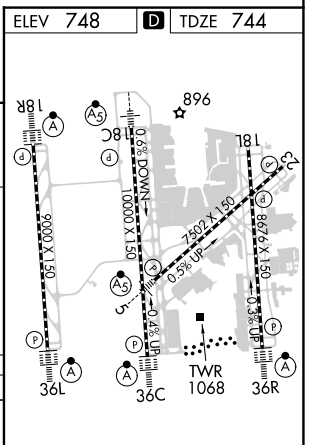
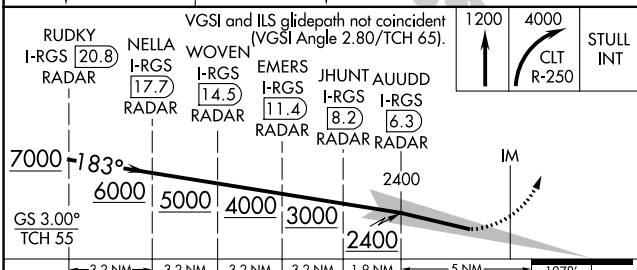
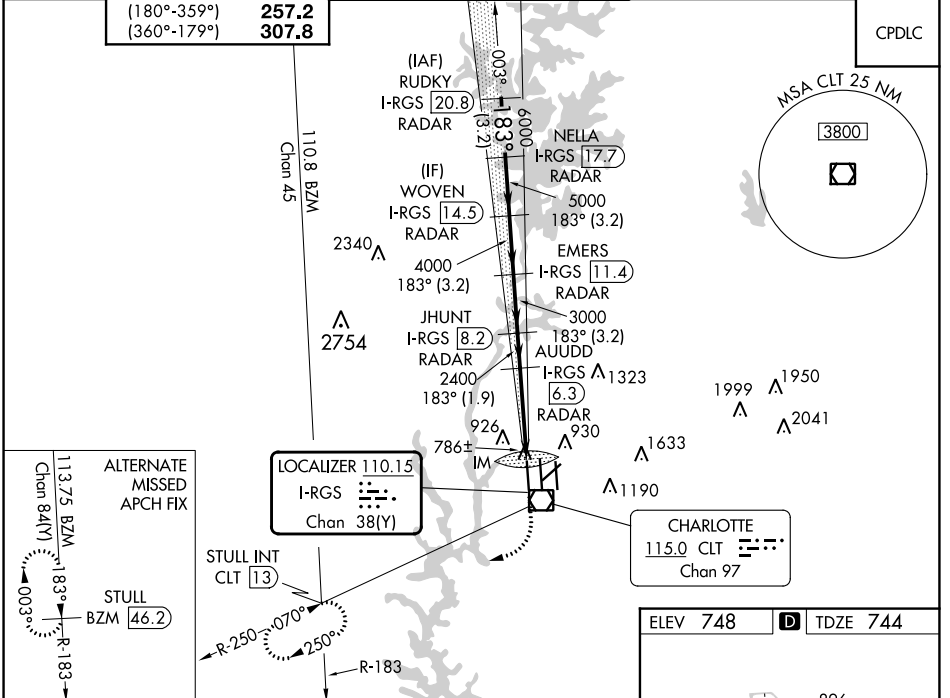


LOC/DME I-RGS <b>110.15</b> Chan <b>38(Y)</b>	APP CRS <b>183°</b>	Rwy Idg <b>9000</b> TDZE <b>744</b> Apt Elev <b>748</b>
---	------------------------	---

# ILS RWY 18R (SA CAT I)

CHARLOTTE/DOUGLAS INTL (CLT)

<b>RADAR required for procedure entry. DME or RADAR required.</b> Simultaneous approach authorized. Requires specific OPSPEC, MSPEC or LOA approval and use of HUD to DH.		<b>ALSF-2</b> 	<b>MISSED APPROACH:</b> Climb to 1200 then climbing right turn to 4000 on CLT VOR/DME R-250 to <b>STULL INT/CLT 13</b> DME and hold, continue climb-in-hold to 4000.	
<b>D-ATIS</b> ARR <b>121.15</b> DEP <b>132.1</b>	<b>CHARLOTTE APP CON</b> (001°-119°) <b>128.32</b> (120°-295°) <b>120.05</b> (296°-360°) <b>134.75</b> (180°-359°) <b>257.2</b> (360°-179°) <b>307.8</b>	<b>CHARLOTTE TOWER</b> (Rwys 18L-36R) <b>118.1 257.8</b> (Rwy 18C-36C) <b>126.4 257.8</b> (Rwy 18R-36L) <b>133.35 257.8</b>	<b>GND CON</b> <b>121.8 348.6</b> (WEST) <b>121.9 348.6</b> (EAST)	<b>CLNC DEL</b> <b>127.15</b> <b>348.6</b>



CATEGORY	A	B	C	D
S-ILS 18R	RA 228/14 150 DA 894			
<b>SA CATEGORY I ILS SPECIAL AIRCREW &amp; AIRCRAFT CERTIFICATION REQUIRED</b>				

SE-2, 26 DEC 2024 to 23 JAN 2025

SE-2, 26 DEC 2024 to 23 JAN 2025

HIRL all Rwys  
 REIL Rwys 18L and 23  
 TDZ/CL Rwys 18R, 36L, 36C and 36R