

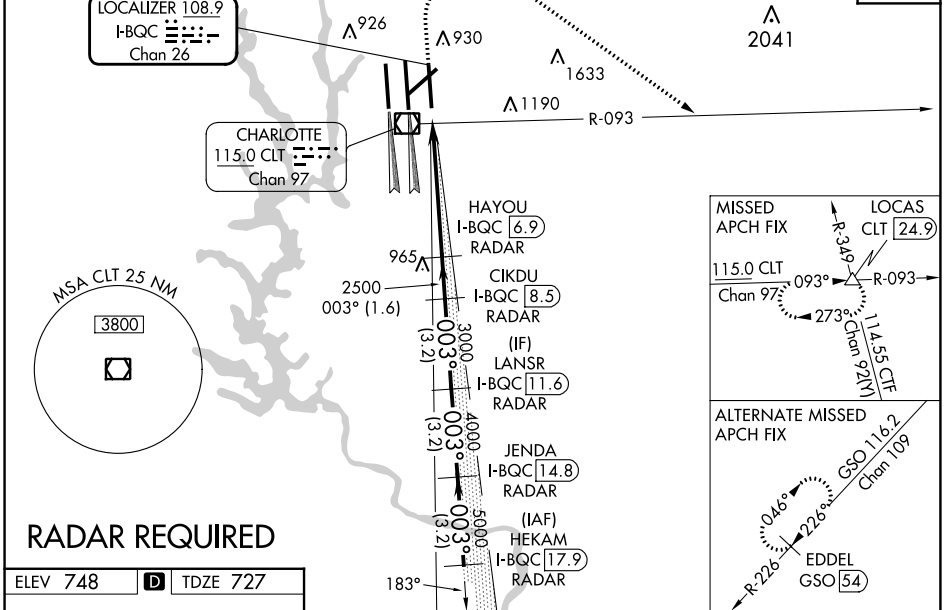
LOC/DME I-BQC 108.9 Chan 26	APP CRS 003°	Rwy Idg TDZE Apt Elev	8390 727 748
--	------------------------	-----------------------------	---

ILS RWY 36R (CAT II & III)

CHARLOTTE/DOUGLAS INTL (CLT)

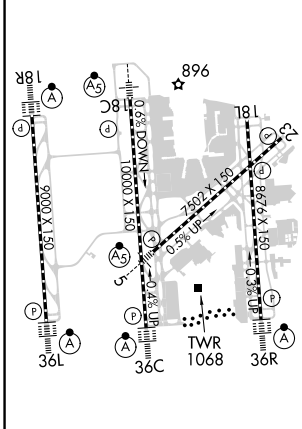
Simultaneous approach authorized. DME or RADAR required.	ALS-2	MISSED APPROACH: Climb to 1320 then climbing right turn to 4000 on CLT VOR/DME R-093 to LOCAS INT/24.9 DME and hold.		
		D-ATIS	CHARLOTTE APP CON	CHARLOTTE TOWER

ARR 121.15	(001°-119°) 128.32	(Rwys 18L-36R) 118.1 257.8	121.8 348.6 (WEST)	127.15
DEP 132.1	(120°-295°) 120.05	(Rwy 18C-36C) 126.4 257.8	121.9 348.6 (EAST)	348.6
	(296°-360°) 134.75	(Rwy 18R-36L) 133.35 257.8		
	(180°-359°) 257.2			
	(360°-179°) 307.8			

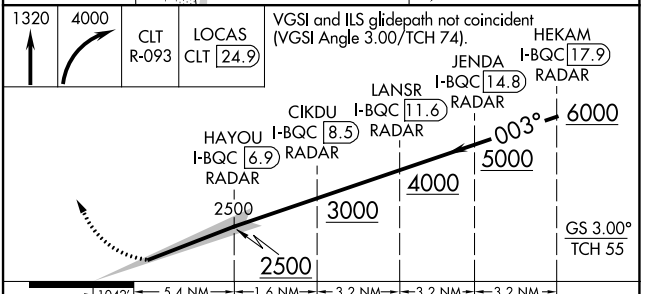


RADAR REQUIRED

ELEV 748	D	TDZE 727
----------	----------	----------



HIRL all Rwys
REIL Rwys 18L and 23
TDZ/CL Rwys 18R, 36L, 36C and 36R



CATEGORY	A	B	C	D
S-ILS 36R	CAT II RA 119/12 100 DA 827			
S-ILS 36R	CAT IIIa RVR 06			
S-ILS 36R	CAT IIIb NA			
S-ILS 36R	CAT IIIc NA			

CATEGORY II & III ILS SPECIAL AIRCREW & AIRCRAFT CERTIFICATION REQUIRED

SE-2, 26 DEC 2024 to 23 JAN 2025

SE-2, 26 DEC 2024 to 23 JAN 2025