

LOC/DME I-VKQ 110.35 Chan 40(Y)	APP CRS 183°	Rwy Idg TDZE Apt Elev 8676 748 748
--	------------------------	--

ILS or LOC RWY 18L

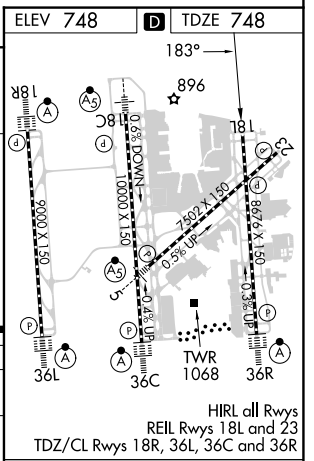
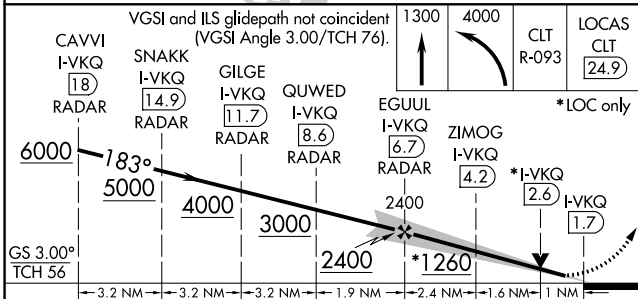
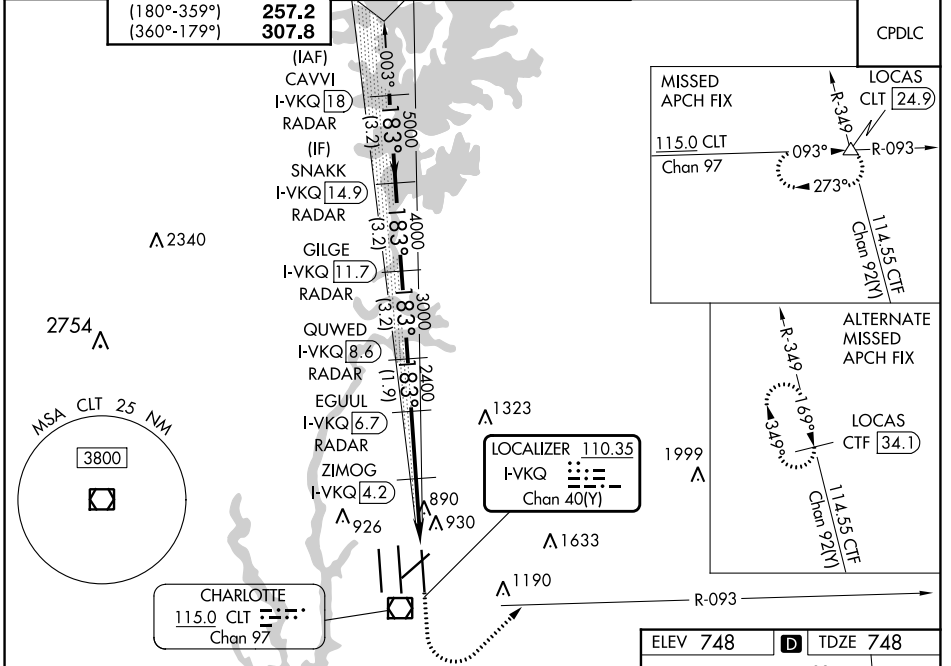
CHARLOTTE/DOUGLAS INTL (CLT)

RADAR required for procedure entry. DME or RADAR required.

Simultaneous approach authorized.
Rwy 18L helicopter visibility reduction below RVR 4000 NA.

MISSED APPROACH: Climb to 1300 then climbing left turn to 4000 on CLT VOR/DME R-093 to LOCAS INT/CLT 24.9 DME and hold.

D-ATIS ARR 121.15 DEP 132.1	CHARLOTTE APP CON (001°-119°) 128.32 (120°-295°) 120.05 (296°-360°) 134.75 (180°-359°) 257.2 (360°-179°) 307.8	CHARLOTTE TOWER (Rwys 18L-36R) 118.1 257.8 (Rwy 18C-36C) 126.4 257.8 (Rwy 18R-36L) 133.35 257.8	GND CON 121.8 348.6 (WEST) 121.9 348.6 (EAST)	CLNC DEL 127.15 348.6
---	--	---	---	---



CATEGORY	A	B	C	D	
S-ILS 18L	1002/40 254 (300-¾)				
S-LOC 18L	1260/55 512 (600-1)	1260-1¾ 512 (600-1¾)			
ZIMOG FIX MINIMUMS (DME REQUIRED)					
S-LOC 18L	1140/55 392 (400-1)	1140/60 392 (400-1¼)			
FAF to MAP 5 NM					
Knots	60	90	120	150	180
Min:Sec	5:00	3:20	2:30	2:00	1:40

SE-2, 26 DEC 2024 to 23 JAN 2025

SE-2, 26 DEC 2024 to 23 JAN 2025