

LOC I-DQG	APP CRS	Rwy Idg	<b>10000</b>
<b>111.7</b>	<b>003°</b>	TDZE	<b>707</b>
		Apt Elev	<b>748</b>

# ILS or LOC RWY 36C

CHARLOTTE/DOUGLAS INTL (CLT)

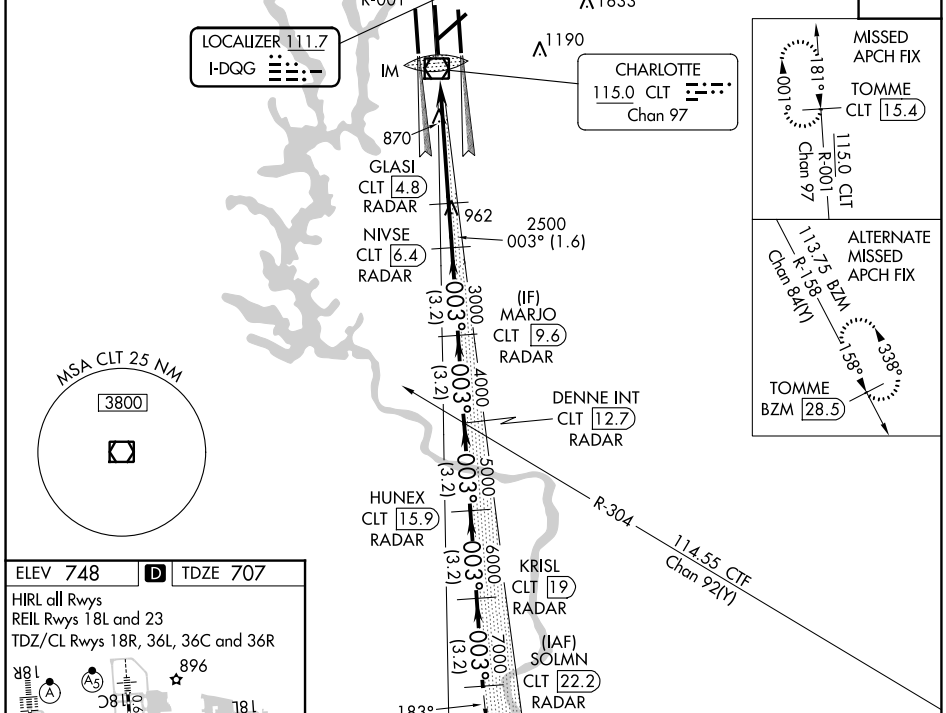
RADAR required for procedure entry. DME or RADAR required.

**⚠** Circling NA at night. Simultaneous approach authorized. DQG ILS LLZ Rwy 36C unusable for rollout guidance.

ALSF-2  
**A**

MISSED APPROACH: Climb to 3000 on CLT VOR/DME R-001 to TOMME/CLT 15.4 DME and hold.

D-ATIS	CHARLOTTE APP CON	CHARLOTTE TOWER	GND CON	CLNC DEL
ARR <b>121.15</b>	(001°-119°) <b>128.32</b>	(Rwys 18L-36R) <b>118.1 257.8</b>	<b>121.8 348.6</b> (WEST)	<b>127.15</b>
DEP <b>132.1</b>	(120°-295°) <b>120.05</b>	(Rwy 18C-36C) <b>126.4 257.8</b>	<b>121.9 348.6</b> (EAST)	<b>348.6</b>
	(296°-360°) <b>134.75</b>	(Rwy 18R-36L) <b>133.35 257.8</b>		
	(180°-359°) <b>257.2</b>			
	(360°-179°) <b>307.8</b>			



ELEV 748 **D** TDZE 707

HIRL all Rwys  
REIL Rwys 18L and 23  
TDZ/CL Rwys 18R, 36L, 36C and 36R

FAF to MAP 5.4 NM

Knots	60	90	120	150	180
Min:Sec	5:24	3:36	2:42	2:10	1:48

VGSI and ILS glidepath not coincident (VGSI Angle 3.00/TCH 72).

CLT R-001	TOMME CLT 15.4	DENNE INT CLT 12.7	HUNEX CLT 19	KRISL CLT 22.2	SOLMN CLT 22.2		
GLASI CLT 4.8	NIVSE CLT 6.4	MARJO CLT 9.6	DENNE INT CLT 12.7	HUNEX CLT 19	KRISL CLT 22.2		
IM	2500	3000	4000	5000	6000	7000	8000
GS 3.00° TCH 57							
CATEGORY A B C D							
S-ILS 36C 907/18 200 (200-1/2)							
S-LOC 36C 1120/24 413 (400-1/2)							
<b>C</b> CIRCLING 1380-1 632 (700-1) 1500-2 1/4 752 (800-2 1/4) 1500-2 1/2 752 (800-2 1/2)							

SE-2, 26 DEC 2024 to 23 JAN 2025

SE-2, 26 DEC 2024 to 23 JAN 2025