

LOC/DME I-XUU 110.15 Chan 38(Y)	APP CRS 003°	Rwy Idg TDZE 9000 744 Apt Elev 748
--	------------------------	---

ILS or LOC RWY 36L

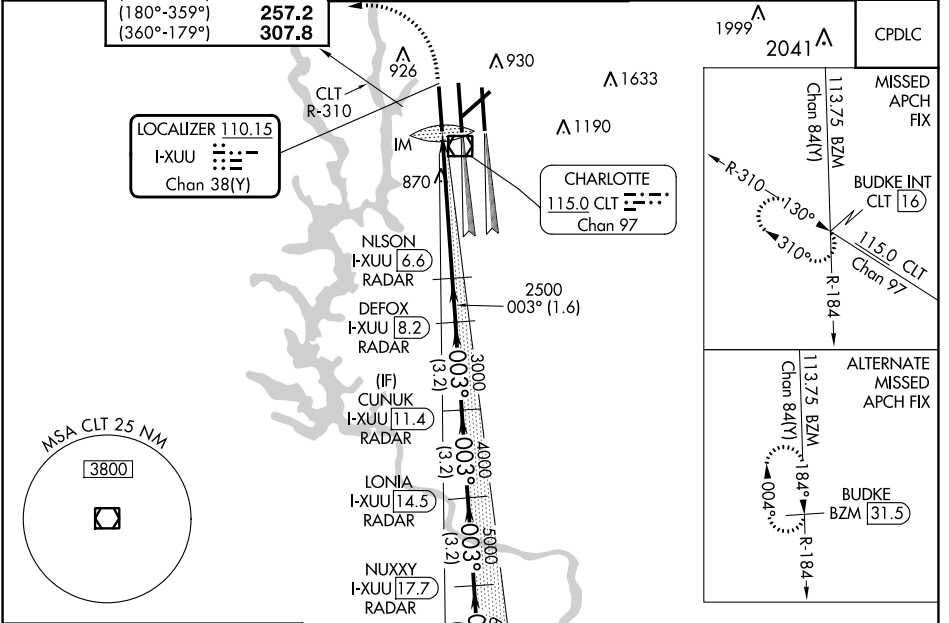
CHARLOTTE/DOUGLAS INTL (CLT)

▼ Circling NA at night. Simultaneous approach authorized.
▲ DME or RADAR required.

ALSF-2

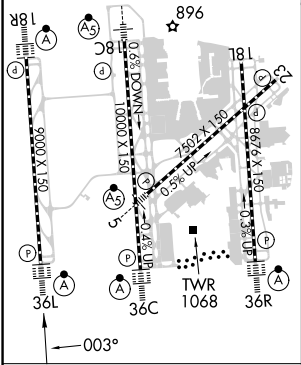
MISSED APPROACH: Climb to 1200 then climbing left turn to 4000 on CLT VOR/DME R-310 to BUDKE/CLT 16 DME and hold.

D-ATIS ARR 121.15 DEP 132.1	CHARLOTTE APP CON (001°-119°) 128.32 (120°-295°) 120.05 (296°-360°) 134.75 (180°-359°) 257.2 (360°-179°) 307.8	CHARLOTTE TOWER (Rwys 18L-36R) 118.1 257.8 (Rwy 18C-36C) 126.4 257.8 (Rwy 18R-36L) 133.35 257.8	GND CON 121.8 348.6 (WEST) 121.9 348.6 (EAST)	CLNC DEL 127.15 348.6
---	--	---	---	---



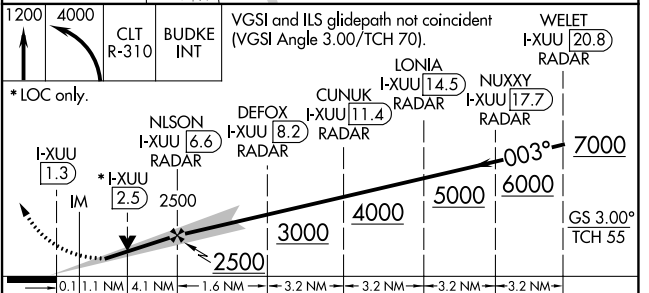
ELEV 748	D	TDZE 744
----------	----------	----------

HIRL all Rws
REIL Rws 18L and 23
TDZ/CL Rws 18R, 36L, 36C and 36R



Knots	60	90	120	150	180
Min:Sec	5:18	3:32	2:39	2:07	1:46

RADAR REQUIRED



CATEGORY	A		B		C		D
S-ILS 36L	944/18 200 (200-½)						
S-LOC 36L	1180/24	436 (500-½)	1180/40	436 (500-¾)			
C CIRCLING	1380-1	632 (700-1)	1500-2¼	752 (800-2¼)	1500-2½	752 (800-2½)	