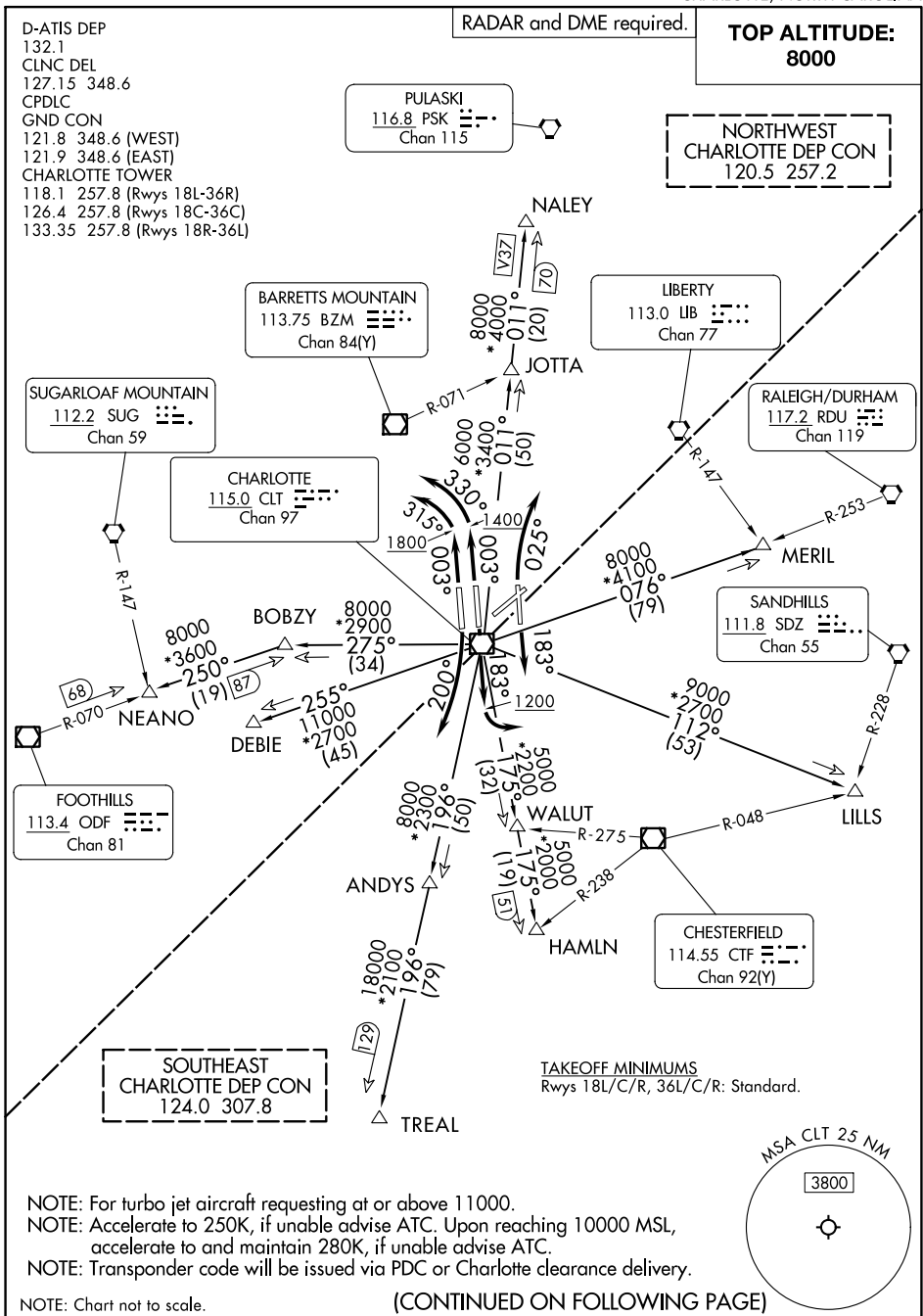


**(KER4.KER) 24081**  
**KERMIT FOUR DEPARTURE**

AL-78 (FAA)

CHARLOTTE/DOUGLAS INTL (CLT)  
 CHARLOTTE, NORTH CAROLINA



SE-2, 26 DEC 2024 to 23 JAN 2025

SE-2, 26 DEC 2024 to 23 JAN 2025

**KERMIT FOUR DEPARTURE**  
**(KER4.KER) 21MAR24**

CHARLOTTE, NORTH CAROLINA  
 CHARLOTTE/DOUGLAS INTL (CLT)

# KERMIT FOUR DEPARTURE



## DEPARTURE ROUTE DESCRIPTION

TAKEOFF RUNWAY 18L: Climb on heading 183°, thence . . . .

TAKEOFF RUNWAY 18C: Climb on heading 183° to 1200 before turning left, thence . . . .

TAKEOFF RUNWAY 18R: Climbing right turn heading 200°, thence . . . .

TAKEOFF RUNWAY 36L: Climb on heading 003° to 1800 then left turn heading 315°, thence . . . .

TAKEOFF RUNWAY 36C: Climb on heading 003° to 1400 then left turn heading 330°, thence . . . .

TAKEOFF RUNWAY 36R: Climbing right turn heading 025°, thence . . . .

. . . . on RADAR vectors to intercept filed/assigned transition or enroute fix/navaid.  
Maintain 8000, expect filed altitude/flight level 10 minutes after departure.

ANDYS TRANSITION (KER4.ANDYS): From over CLT VOR/DME on CLT R-196 to ANDYS.

DEBIE TRANSITION (KER4.DEBIE): From over CLT VOR/DME on CLT R-255 to DEBIE.

HAMLN TRANSITION (KER4.HAMLN): From over CLT VOR/DME on CLT R-175 to HAMLN.

JOTTA TRANSITION (KER4.JOTTA): From over CLT VOR/DME on CLT R-011 to JOTTA.

LILLS TRANSITION (KER4.LILLS): From over CLT VOR/DME on CLT R-112 to LILLS.

MERIL TRANSITION (KER4.MERIL): From over CLT VOR/DME on CLT R-076 to MERIL.

NALEY TRANSITION (KER4.NALEY): From over CLT VOR/DME on CLT R-011 to NALEY.

NEANO TRANSITION (KER4.NEANO): From over CLT VOR/DME on CLT R-275 to BOBZY, then on ODF R-070 to NEANO.

TREAL TRANSITION (KER4.TREAL): From over CLT VOR/DME on CLT R-196 to TREAL.

SE-2, 26 DEC 2024 to 23 JAN 2025

SE-2, 26 DEC 2024 to 23 JAN 2025